

Security Driven by **Intelligence**

**GANZ**<sup>®</sup>  
Security Solutions  
by 

# IP CAMERA GUIDE 2016

[ganzsecurity.com](http://ganzsecurity.com)

# Security Driven by **Intelligence**

## About Ganz

Ganz Security by CBC is a global leader in the design, development and manufacture of world-class, trend setting security solutions. The Ganz brand offers integrated solutions across multiple market segments and includes an extensive selection of products including IP and analog cameras, performance driven optics, a diverse range of intelligent video analytics, discreet enclosures, video management software and a full range of recording and display devices. Ganz Security's state-of-the-art products are backed by exceptional technical support and industry leading customer service and are designed for easy integration and maximum scalability for any system requirements.

## Design Center

To further our commitment, the Ganz Design Center was developed to take the guesswork out of building a truly effective surveillance solution. From start to finish, our technical experts work directly with you to design a system that is built around your needs— with the right products, the right technology and the right level of support.

Our exceptional “VIP” level of support backs all of our products. With offices on the East Coast, West Coast and Mexico City, our customer service and technical teams are available to answer questions or to assist in configuring a system with one vision—your total security.

## **Intelligence** Driven by Design

---



Ganz Security is a division of CBC AMERICAS Corp. Ganz® is a registered trademark of the CBC Group.

## Content

4 GXi Imbedded Intelligence Options

6 PixelPro IP Cameras with GXi Imbedded Intelligence

13 PixelPro & PixelPro Mini IP Cameras

21 Easy Install IP Domes

**NEW** 22 GENSTAR IP Series

# Imbedded Intelligence Content Analytics



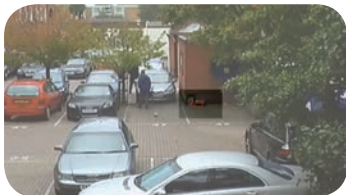
## Intrusion Detection

For perimeter security and crime prevention cameras can be used as intrusion detection sensor. An alarm is generated when a pre-determined object (person or vehicle) crosses into the detection zone. Equally, an alarm is generated when an object crosses from the inside to the outside of a detection zone.



## People and Vehicle Counting

This feature counts the people and vehicles that pass through the setup “lines” with precision. It recognizes directions, so it can differentiate whether they are entering or exiting. It can also measure the speed of the objects. This feature is ideal for retail: counting customers, identifying trends and alerting staff when a group gathers in a defined location..



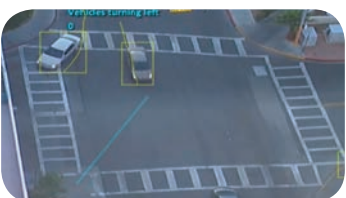
## Abandoned & Removed Object Detection

Objects abandoned in a pre-defined zone it will trigger an alarm (a bag or suitcase left on the street or public transit). Objects are detected and trigger an alarm when carried into a pre-defined zone. Applications include detection of suspicious objects and clarification of inventory losses.



## Stopping and Dwell Detection

Objects that are stopped inside a zone, or remain inside a zone for longer than the defined amount of time will trigger an alarm. Ideal for identifying a loitering person.



## Directional Detection

Objects that travel in the configured direction (within the limits of the acceptance angle) through a zone or over a line trigger an alarm. This can be used for traffic control and entry/exit monitoring.



## Tailgating Detection


Object tailgating is defined as two objects crossing a virtual line or zone within in a pre-defined time frame. This is suitable for vehicles or with people in an access control setting.

These examples represent only a few of the ways GXi's Imbedded Intelligence enables you to capture the real-time data needed to protect your business.

# GANZ PixelPro WITH OXi TECHNOLOGY License List

PixelPro Camera & Encoder Functions	Pre-Installed Licenses			Advanced Functions												
	Number of Detection Zones	Tamper detect	Presence (Intelligent Motion Sensor)	Surveillance									Counting		Tracking	
				Enter/Exit	Appear/Disappear	Stopped	Dwell	Direction Filter	Speed Filter	Tailgating	Abandoned and Removed	Color Filter	On-screen Counting	Counting Line	PTZ Autotracking	
<b>1080p Cameras</b> ZN-xxXE Series / ZN1-xx	40	●	●	●	●	●	●	●	●	●	●	—	●	●	●	●*
<b>D1 Cameras</b> ZN-xxVE Series (V,Vx,Vxx) ZN-Rx / ZS-x	40	●	●	●	●	●	●	●	●	●	●	●	●	●	●	●*
<b>Video Encoder</b> ZS1 Series	Optional	Optional	Optional	●	●	●	●	●	●	●	●	—	●	●	●	—

\*Pre-installed in PTZ Camera

 Imbedded Intelligence Features	Free Licenses			Advanced Functions												
	Number of Detection Zones	Tamper detect	Presence (Intelligent Motion Sensor)	Surveillance									Counting		Tracking	
				Enter/Exit	Appear/Disappear	Stopped	Dwell	Direction Filter	Speed Filter	Tailgating	Abandoned and Removed	Color Filter	On-screen Counting	Counting Line	PTZ Autotracking	
ZNS-PRES-1	40	●	●	—	—	—	—	—	—	—	—	—	—	—	—	—
ZNS-COUNT-1	40	●	—	—	—	—	—	—	—	—	—	—	—	●	●	—
ZNS-ACCESS-1	40	●	●	—	—	—	—	—	—	●	—	—	—	●	●	—
ZNS-DETECT-1	40	●	●	—	—	—	●	●	●	—	—	—	—	—	—	—
ZNS-FOLLOW-1	40	●	—	—	—	—	—	—	—	—	—	—	—	—	—	●
ZNS-SURV-1	40	●	●	●	●	●	●	●	●	●	D1 cameras only	—	●	—	—	
ZNS-PRO-1	40	●	●	●	●	●	●	●	●	●	D1 cameras only	●	●	●	—	
ZNS-ADVANCED-1	40	●	●	●	●	●	●	●	●	●	D1 cameras only	—	●	●	—	
ZNS-TRACK-1	40	●	●	●	●	●	●	●	●	●	D1 cameras only	—	●	—	●	

ZN-STB-1 - Embedded Video Stabilization

Icon Legend:  Imbedded Intelligence Video Analytics

## BOX & DOME CAMERAS with IMBEDDED INTELLIGENCE



	INDOOR BOX CAMERA	INDOOR DOME	INDOOR DOME	OUTDOOR DOME
	<b>ZN-NH22XE</b>	<b>ZN-D100VE</b>	<b>ZN-DN312XE-M</b>	<b>ZN-DNT352XE</b>
Sensor	1/2.7" CMOS	1/4" VGA CMOS	1/2.7" CMOS	1/2.7" CMOS
Compression format	H.264, MJPEG	H.264, MJPEG	H.264, MJPEG	H.264, MJPEG
Max. resolution	1080p	VGA	1080p	1080p
Effective pixels	1920 x 1080	640 x 480	1920 x 1080	1920 x 1080
Compression FPS	30fps@HD 1080p	30 fps@D1	30fps@HD 1080p	30fps@HD 1080p
Lens	CS-Mount	3.6mm, F2.0	3-9mm, F1.2 with <b>ProSet</b> Motorized Focus & Zoom	3-9mm, F1.2
Horizontal FOV	-	48°	93.0° (Wide) to 31.7° (Tele)	93.0° (Wide) to 31.7° (Tele)
Iris control	Manual / DC Iris	DC-Iris	DC-Iris	DC-Iris
S/N ratio	50dB or more	-	50dB or more	50dB or more
Video output	1 x BNC (for installation)	-	1 x BNC (for installation)	1 x BNC (for installation)
Alarm in-/output	1 / 1	1 / 1	1 / 1	1 / 1
Audio in-/output	1 / 1	1 / 1	1 / 1	1 / 1
Audio codec	G.711	G.711	G.711	G.711
Day/Night Performance	True Day/Night	Digital Day/Night	True Day/Night	True Day/Night
Minimum illumination	1.0 Lux (Color) 0.001 Lux (B/W, Sens-up 32x)	0.9 Lux	1.0 Lux (Color) 0.001 Lux (B/W, Sens-up 32x)	1.0 Lux (Color) 0.001 Lux (B/W, Sens-up 32x)
AGC/BLC/DNR/DWDR	Yes / Yes / Yes / Yes	Yes / Yes / Yes / Yes	Yes / Yes / Yes / Yes	Yes / Yes / Yes / Yes
Network interface	10/100 Base T	10/100 Base T	10/100 Base T	10/100 Base T
Protocols	TCP/IP, UDP/IP, HTTP, RTSP, RTP, RTP/UDP, RTP/TCP, SNTP, mDNS, UPnP, SMTP, SOCK, IGMP, DHCP, DDNS, SSL v2/v3, IEEE 802.1X, SSH, SNMP v2/v3			
Remote access	IE 7.0+	IE 7.0+	IE 7.0+	IE 7.0+
Micro SD Storage	Built-in SD slot	-	Built-in SD slot	Built-in SD slot
Motion detection	Yes	Yes	Yes	Yes
Power source	12VDC	12VDC	12VDC	12VDC
PoE	Support (IEEE 802.3af)	-	Support (IEEE 802.3af)	Support (IEEE 802.3af)
Power consumption	400mA@12VDC	230 mA @ 12VDC	400mA@12VDC	5.28W (with heater: 22.8W)
Operating environment	32°F ~ 122 °F	32 °F ~ 122 °F	32°F ~ 122°F	-40°F ~ 122°F [PoE] 32°F ~ 122°F; Built-in heater
Housing/ Color / IR	Aluminium	Polycarbonate / Black	Polycarbonate	Aluminium /IP66
Weight	1.1 lbs. (without lens)	0.6 lbs.	1.1 lbs.	2.6 lbs.
Dimensions	2.8" W x 2.5 H x 5.5" D	4.9" ø x 4" H	5.7"ø x 4.8"	4.5"ø x 5.1"(H)
Certifications	ONVIF (Profile S), CE, FCC	FCC, CE	ONVIF (Profile S), FCC, CE	ONVIF (Profile S), FCC, C, IP66

See page 9 for mounting accessories

# DOME CAMERAS with IMBEDDED INTELLIGENCE



	INDOOR DOME	INDOOR DOME	OUTDOOR IR DOME	REPOSITIONABLE INDOOR DOME	REPOSITIONABLE OUTDOOR DOME
	ZN1-D4FN5	ZN1-D4NMZ43L	ZN-DNT352XE-MIR	ZN-DNT352XE-MIR	ZN-DN332XE-MPD
Sensor	1/2.9" CMOS		1/2.7" CMOS		
Compression format	H.264, MJPEG	H.264, MJPEG	H.264, MJPEG	H.264, MJPEG	H.264, MJPEG
Max. resolution	1080p	1080p	1080p	1080p	1080p
Effective pixels	1920 x 1080	1920 x 1080	1920 x 1080	1920 x 1080	1920 x 1080
Compression FPS	30fps@HD 1080p	30fps@HD 1080p	30fps@HD 1080p	30fps@HD 1080p	30fps@HD 1080p
Lens	4.0mm	3 – 9mm, F1.2 with <b>ProSet</b> Motorized Focus & Zoom			
Horizontal FOV	84.4°	133.5° (Wide) to 40.8° (Tele)	93.0° (Wide) to 31.7°(Tele)		
Iris control	-	DC-Iris	DC-Iris	DC-Iris	DC-Iris
S/N ratio	50dB or more	50dB or more	50dB or more	50dB or more	50dB or more
Video output	-	1 x BNC (for installation)	1 x BNC (for installation)		
Alarm in-/output	1 / 1	1 / 1	1 / 1	1 / 1	1 / 1
Audio in-/output	-	-	1 / 1	1 / 1	1 / 1
Audio codec	-	-	G.711	G.711	G.711
Day/Night Performance	Digital Day/Night	True Day/Night	True Day/Night	True Day/Night	True Day/Night
Minimum illumination	1.0 Lux (Color) 0.001 Lux (DSS on)	1.0 Lux (Color) 0 Lux (IR on)	1.0 Lux (Color) 0.0 Lux (IR LED on)	1.0 Lux (Color) 0.0 Lux (IR LED on)	1.0 Lux (Color) 0.001 Lux (DSS on)
AGC/BLC/DNR/DWDR	Yes / Yes / Yes / Yes	Yes / Yes / Yes / Yes	Yes / Yes / Yes / Yes	Yes / Yes / Yes / Yes	Yes / Yes / Yes / Yes
Network interface	10/100 Base T	10/100 Base T	10/100 Base T	10/100 Base T	10/100 Base T
Protocols	QoS Layer 3 DiffServ, TCP/IP, UDP/IP, HTTP, HTTPS, RTSP, RTP, RTCP, RTP/UDP, RTP/TCP, mDNS, UPnP™, SMTP, DHCP, DNS, DynDNS, NTP, SNMPv1/v2c/v3(MIB-II), IGMP, ICMP, SSLv2/v3, TLSv1, Onvif				
Remote access	IE 7.0+	IE 7.0+	IE 7.0+	IE 7.0+	IE 7.0+
Micro SD Storage	Built-in SD slot	Built-in SD slot	Built-in SD slot	Built-in SD slot	Built-in SD slot
Motion detection	Yes	Yes	Yes	Yes	Yes
Power source	12VDC	12VDC	12VDC	12VDC	12VDC
PoE	Support (IEEE 802.3af)		Support (IEEE 802.3af)		
Power consumption	2.64W @ 12VDC	5.6W @ 12VDC	1.4A@12VDC (Heater & IR)	8.64W@12VDC	16.2W@12VDC
Operating environment	32°F ~ 122°F	32°F ~ 104°F	12VDC: -40°F ~ 122°F PoE: 32°F ~ 122°F	PoE 32°F ~ 122°F	12VDC: -40°F ~ 122°F PoE: 32°F ~ 122°F
Housing/ Color / IR	Polycarbonate	Polycarbonate / 14 IR LEDs	Aluminium / IP66 /32 Smart IR LEDs	Polycarbonate	Aluminium / IP66
Weight	0.7 lbs.	1 lbs.	2.6 lbs	2.6 lbs	3.5 lbs
Dimensions	3.3" ø x 3.7" H	5.8" ø x 3.9" H	4.5 ø x 5.1" H	6.1"ø x 5.1"	6.5"ø x 5.3" H H
Certifications	ONVIF (Profile S), FCC, CE			ONVIF (Profile S), FCC, CE, IP66	ONVIF (Profile S), FCC, CE

Icon Legend:  Imbedded Intelligence Video Analytics

See page 9 for mounting accessories

All specifications are subject to change without notice.



# MINI & BULLET CAMERAS with IMBEDDED INTELLIGENCE



	INDOOR WIRELESS CUBE	INDOOR MINI DOME	OUTDOOR MINI BULLET	OUTDOOR MINI BULLET	OUTDOOR BULLET
	ZN1-Q3FN2	ZN1-M4FN3	ZN1-N4NFN6	ZN1-B4NMZ34	ZN-BT662XE-MIR
Sensor	1/4" CMOS	1/2.7" CMOS	1/2.9" CMOS	1/2.9" CMOS	1/2.7" CMOS
Compression format	H.264, MJPEG	H.264, MJPEG	H.264, MJPEG	H.264, MJPEG	H.264, MJPEG
Max. resolution	720p	1080p	1080p	1080p	1080p
Effective pixels	1280 x 720	1920 x 1080	1920 x 1080	1920 x 1080	1920 x 1080
Compression FPS	30fps@HD 720p	30fps@HD 1080p	30fps@HD 1080p	30fps@HD 1080p	30fps@HD 1080p
Lens	2.7mm, F2.0	2.8mm, F2.0	4.3mm, F2.0	3- 9mm, F1.4 with <b>ProSet</b> Motorized Focus & Zoom	3- 9mm, F1.4 with <b>ProSet</b> Motorized Focus & Zoom
Horizontal FOV	91°	110°	74.4°	110° (Wide) to 35.5° (Tele)	93° (Wide) to 31.7° (Tele)
Iris control	-	-	-	DC-Iris	DC-Iris
S/N ratio	50dB or more	50dB or more	50dB or more	50dB or more	60dB
Video output	-	-	-	1 x BNC (for installation)	1 x BNC (for installation)
Alarm in-/output	1 / 1	-	-	1 / 1	1 / 1
Audio in-/output	1 / 1	-	-	-	1 / 1
Audio codec	G.711	-	-	-	G.711
Day/Night Performance	Digital Day/Night	Digital Day/Night	True Day/Night	True Day/Night	True Day/Night
Minimum illumination	0.8 Lux (Color) 0.1 Lux (B/W, DSS on)	1.0 Lux (Color) 0.001 Lux (B/W, DSS on)	1.0 Lux (Color) 0.007 Lux (Sens-up)	1.0 lux (Color) 0 lux (B/W, IR on)	0.5 Lux (Color) 0 Lux (B/W, IR on)
AGC/BLC/DNR/DWDR	Yes / Yes / Yes / Yes	Yes / Yes / Yes / Yes	Yes / Yes / Yes / Yes	Yes / Yes / Yes / Yes	Yes / Yes / Yes / Yes
Network interface	10/100 Base T	10/100 Base T	10/100 Base T	10/100 Base T	10/100 Base T
Protocols	TCP/IP, UDP/IP, HTTP, RTSP, RTCP, RTP/UDP, RTP/TCP, SNTP, mDNS, UPnP, SMTP, SOCK, IGMP, DHCP, DDNS, SSL v2/v3, IEEE 802.1X, SSH, SNMP v2/v3				
Remote access	IE 7.0+	IE 7.0+	IE 7.0+	IE 7.0+	IE 7.0+
Micro SD Storage	Built-in SD slot	Built-in SD slot	Built-in SD slot	Built-in SD slot	Built-in SD slot
Motion detection	Yes	Yes	Yes	Yes	Yes
Power source	12VDC	PoE	PoE	12VDC	12VDC
PoE	-	Support (IEEE 802.3af)			
Power consumption	max. 280 mA @ 12VDC	max. 2.4W @ PoE	max. 5.55W @ PoE	max. 5.55W @ PoE	max. 1.5A@12VDC (heater on)
Operating environment	32°F ~ 104°F	32°F ~ 104°F	-4°F ~ 113°F	-4°F ~ 113°F	12VDC: -40 °F ~ 122 °F PoE: 32 °F ~ 122 °F
Housing / Rating / IR	Polycarbonate	Polycarbonate	Aluminium / IP66 / 8 LEDs	Aluminium / IP66 / 8 LEDs	Aluminium / IP66 / 34 LEDs
Weight	0.31 lbs.	0.6 lbs.	1.3 lbs	1.3 lbs.	3.3 lbs.
Dimensions	3"W x 4.4"H x 1.4"D (w/o stand)	4.2" D x 2.2"H	2.9" W x 3" H x 9.6"D (with bracket)	2.9" W x 3" H x 9.6"D (with bracket)	3.3"W x 3.2"H x 7.6"D (w/o bracket)
Certifications	ONVIF (Profile S), FCC, CE		ONVIF (Profile S) FCC, CE, IP66		

See page 9 for mounting accessories



# INDOOR & OUTDOOR DOME MOUNTING ACCESSORIES



**INDOOR DOME  
ZN-DN312XE-M**



**OUTDOOR DOME  
ZN-DNT352XE**



**OUTDOOR DOME  
ZN-DNT352XE-MIR**



WMB-3000	CMB-3000	CMA-3000	PMA-3000	FMB-3102/ FMB-3502
Wall Mount for ZN-DN312XE-M, ZN-DNT352XE, ZN-DNT352XE-MIR	Ceiling Mount for ZN-DN312XE-M, ZN-DNT352XE, ZN-DNT352XE-MIR	Corner Mount for WMB-3000	Pole Mount Adaptor for WMB-3000	Flush Mount Bracket for ZN-DN312XE ZN-DNT352XE



**INDOOR DOME  
ZN1-D4FN5**



WMB-3200	CMB-3200
Wall Mount for ZN1-D4FN5	Ceiling Mount for ZN1-D4FN5



**INDOOR DOME  
ZN-D100VE**



WMB-100
Wall Mount for ZN-D100VE



**INDOOR MINI DOME  
ZN1-M4FN3**



PMC-300	WMB-3200
Pendant Mount for ZN1-M4FN3	Wall Mount for ZN1-M4FN3



**INDOOR DOME  
ZN1-D4NMZ43L**



WMB-3400	CMB-3400
Wall Mount for ZN1-D4NMZ43L	Ceiling Mount for ZN1-D4NMZ43L

# PTZ DOME with IMBEDDED INTELLIGENCE



**NEW**



OUTDOOR PTZ	
ZN1-P4DT54	
Sensor	1/2.8" 1080p Exmor CMOS
Compression format	H.264, MPEG-4, MJPEG
Dual stream	Yes, configurable
Resolution	1080p
Resolution options	16:9 mode 1920 x 1080, 1280 x 720, 1120 x 630, 960 x 540, 800 x 450, 640 x 360, 480 x 270, 320 x 180
	4:3 mode SXGA (1280x960), XGA(1024x768), SVGA (800x600), PAL (720x576), NTSC (720x480), VGA (620x480), QVGA (320x240)
Compression FPS	30fps@ 1080p
Lens	4.3 (w) – 129.0mm (t), F1.6 (w) – F4.7 (t) Optical 30x, Digital 12x
Horizontal FOV	Horizontal: Approx. 63.7°(Wide) to 2.3°(Tele)
Day/night Performance	True Day / Night
WDR Performance	Digital
Minimum illumination	Color: 1.4 Lux (50 IRE) / 0.35 Lux (Sens-up) B/W : 0.05 Lux (50 IRE) / 0.013 Lux (Sens-up)
Audio in-/output	1 / 1
Audio codec	G.711-uLaw
Network interface	10 / 100 Base-T
Protocols	QoS Layer 3 DiffServ, TCP/IP, UDP/IP, HTTP, HTTPS, FTP, RTSP, RTCP, RTP/UDP, RTP/TCP, mDNS, UPnP™, SMTP, DHCP, DNS, DynDNS, NTP, SNMPv1/v2c/v3(MIB-II), IGMP, ICMP, SSLv2/v3, TLSv1, SRTP, RTMP
Pan /Tilt Range	Pan Range: 360° Endless Rotation, Tilt Range: -5° ~ 185° Auto-flip
Manual Pan/Tilt Speed	0.01° ~ 120° /sec
Preset Pan/Tilt Speed	600° /sec
Presets	255 preset points; 6 tours; Auto panning; Auto run
Privacy Zone	8 configurable regions
Interfaces	4x Digital-In, 2x Digital-Out
Micro SD Storage	SD/SDHC up to 32GB (card not included)
Power source	AC 24V, PoE
Power consumption	24VAC, PoE+(802.3at) / 46W (heater on) @ 24VAC
Operating conditions	24VAC -40°F ~ 122°F ( -40°C ~ 50°C); PoE+ 32°F ~ 122°F (0°C ~ 50°C); Built-in fan and heater
Housing / IP Rating	Aluminum, Anti-vandal bubble (PC) / IP66
Weight	10.1 lb / 4.6kg
Dimensions	9.1" ø x 11.7"H / 232mm ø x 296.4 H
Certifications	OnVIF (Profile S, Profile G), FCC, CE, IP66

## OUTDOOR PTZ MOUNTING ACCESSORIES



### WMB-4600

Wall Mount Bracket for ZN1-P4DT54



### CMB-4600

Ceiling Mount Bracket for ZN1-P4DT54



### PMA-4600

Pole Mount Adaptor for ZN1-P4DT54

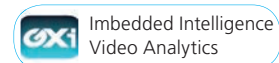


### CMA-4600

Corner Mount Adaptor for ZN1-P4DT54

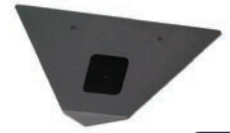


Icon Legend:



## PINHOLE SERIES with GXi IMBEDDED TECHNOLOGY





	PINHOLE CAMERA		HEIGHT STRIP CAMERA		IN-WALL CAMERA		CORNER MOUNT CAMERA	
	ZN1-V4FN3	ZN1-V4FN4	HSx-H28-4	HSx-H37-4	GBK-28-4	GBK-37-4	CMC-28-4	CMC-37-4
Sensor	1/3" CMOS		1/3" CMOS		1/3" CMOS		1/3" CMOS	
Compression format	H.264, MJPEG		H.264, MJPEG		H.264, MJPEG		H.264, MJPEG	
Max. resolution	1080p		1080p		1080p		1080p	
Effective pixels	1920 x 1080		1920 x 1080		1920 x 1080		1920 x 1080	
Compression FPS	30fps@ HD 1080p		30fps@ HD 1080p		30fps@ HD 1080p		30fps@ HD 1080p	
Lens	2.8mm, F2.0	3.7mm, F2.5	2.8mm, F2.0	3.7mm, F2.5	2.8mm, F2.0	3.7mm, F2.5	2.8mm, F2.0	3.7mm, F2.5
Horizontal FOV	82°	63°	82°	63°	82°	63°	82°	63°
Iris control	-		-		-		-	
S/N ratio	50dB or more		50dB or more		50dB or more		50dB or more	
Video output	-		-		-		-	
Alarm input / output	-		-		-		-	
Audio input / output	-		-		-		-	
Audio codec	-		-		-		-	
Day/Night Performance	Digital D/N		Digital D/N		Digital D/N		Digital D/N	
Minimum illumination	Color: 1.0 lux / BW: 0.007 lux (DSS ON)	Color: 1.4 lux / BW: 0.01 lux (DSS ON)	Color: 1.0 lux / BW: 0.007 lux (DSS ON)	Color: 1.4 lux / BW: 0.01 lux (DSS ON)	Color: 1.0 lux / BW: 0.007 lux (DSS ON)	Color: 1.4 lux / BW: 0.01 lux (DSS ON)	Color: 1.0 lux / BW: 0.007 lux (DSS ON)	Color: 1.4 lux / BW: 0.01 lux (DSS ON)
AGC/BLC/DNR/DWDR	Yes / Yes / Yes / Yes		Yes / Yes / Yes / Yes		Yes / Yes / Yes / Yes		Yes / Yes / Yes / Yes	
Network interface	10/100 Base T		10/100 Base T		10/100 Base T		10/100 Base T	
Protocols	TCP/IP, UDP/IP, HTTP, RTSP, RTCP, RTP/UDP, RTP/TCP, SNTP, mDNS, UPnP, SMTP, SOCK, IGMP, DHCP, DDNS, SSL v2/v3, IEEE 802.1X, SSH, SNMP v2/v3							
Remote access	IE 7.0+		IE 7.0+		IE 7.0+		IE 7.0+	
Micro SD Storage	Built-in SD slot		Built-in SD slot		Built-in SD slot		Built-in SD slot	
Motion detection	Yes		Yes		Yes		Yes	
Power source	12VDC		12VDC		12VDC		12VDC	
PoE	Support (IEEE 802.3af)		Support (IEEE 802.3af)		Support (IEEE 802.3af)		Support (IEEE 802.3af)	
Power consumption	max. 3.6W@12VDC		max. 3.6W@12VDC		max. 3.6W@12VDC		max. 3.6W@12VDC	
Operating environment	32°F ~ 122°F		32°F ~ 122°F		32°F ~ 122°F		32°F ~ 122°F	
Housing / Colors	Polycarbonate.		Polycarbonate. (x = W - white, S - silver, B - black)		Aluminum. White, silver & ivory faceplates included		Aluminum. Black faceplate.	
Weight	0.6 lbs		2.6 lbs		0.7 lbs		1.6 lbs.	
Dimensions	Camera unit: 1.1"ø x 1" H Camera control unit: 4.2" W x 1"H x 4.9"D		Height strip: 1.7" W x 1.4" D x 34.1" H, Camera control unit: 4.2" W x 1" H x 4.9"		Faceplate: 4.5" H x 2.8" W x 1.6" D, Main Camera control unit: 4.2" W x 1"H x 4.9" D		Corner mount: 5.5" H x 9.4" W x 4.6" D Camera control unit: 4.2" W x 1"H x 4.9"D	
Certifications	OnVIF (Profile S), FCC, CE		OnVIF (Profile S), FCC, CE		OnVIF (Profile S), FCC, CE		OnVIF (Profile S), FCC, CE	

## PINHOLE SERIES with GXi IMBEDDED TECHNOLOGY



DOOR FRAME CAMERA		
	DFx-28-4	DFx-37-4
Sensor	1/3" CMOS	
Compression format	H.264, MJPEG	
Max. resolution	1080p	
Effective pixels	1920 x 1080	
Compression FPS	30fps@ HD 1080p	
Lens	2.8mm, F2.0	3.7mm, F2.5
Horizontal FOV	82°	63°
Iris control	-	
S/N ratio	50dB or more	
Video output	-	
Alarm in-/output	-	
Audio in-/output	-	
Audio codec	-	
Day/Night Performance	Digital D/N	
Minimum illumination	Color: 1.0 lux / BW: 0.007 lux (DSS ON)	Color: 1.4 lux / BW: 0.01 lux (DSS ON)
AGC/BLC/DNR/DWDR	Yes / Yes / Yes / Yes	
Network interface	10/100 Base T	
Protocols	TCP/IP, UDP/IP, HTTP, RTSP, RTCP, RTP/UDP, RTP/TCP, SNTP, mDNS, UPnP, SMTP, SOCK, IGMP, DHCP, DDNS, SSL v2/v3, IEEE 802.1X, SSH, SNMP v2/v3	
Remote access	IE 7.0+	
Micro SD Storage	Built-in SD slot (card not included)	
Motion detection	Yes	
Power source	12VDC	
PoE	Support (IEEE 802.3af)	
Power consumption	max. 3.6W@12VDC	
Operating environment	32°F ~ 122°F	
Housing /Colors	Polycarbonate. ( x = W - white, S - silver, B - black)	
Weight	0.6 lbs	
Dimensions W x H x D	Camera: 1.7" x 4" x 1.4" Camera control unit: 4.2" x 1" x 4.9"	
Certifications	OnVIF (Profile S), FCC, CE	

## ENCODERS with GXi IMBEDDED TECHNOLOGY



ENCODER	
ZS1-1DS	
Compression format	H.264, MJPEG
Resolution options	D1 / 4CIF / VGA / CIF / QVGA / QCIF
Video framerate	30fps @ D1
Video input	1 x BNC
Video output	1 x BNC
Digital in-/output	2 / 2
Audio in-/output	1 / 1
Audio codec	G.711
RS485	Yes
RS232	Yes
USB 2.0	-
Micro SD Storage	Yes (not included)
Network interface	10/100 Base-T
Dualstream	Yes
Protocols	QoS Layer 3 DiffServ, TCP/IP, UDP/IP, HTTP, RTSP, RTCP, RTP/UDP, RTP/TCP, mDNS, UPnP™, SMTP, DHCP, DNS, DynDNS, NTP, SNMPv1/v2c/v3(MIB-II), IGMP, ICMP, SSLv2/v3, TLSv1
Motion detection	Yes
Power source	12VDC
PoE	Support (IEEE 802.3af)
Power consumption	235mA@12VDC
Operating environment	32°F ~ 122°F
Housing material	Metal
Weight	.9 lbs.
Dimensions	4.1" W x 1.5" H x 5.6" D
Certifications	OnVIF (Profile S), CE, FCC

Icon Legend:  Imbedded Intelligence Video Analytics

## 3 AND 5 MEGA PIXEL BULLET AND BOX CAMERAS




	3 MEGA PIXEL BULLET	5 MEGA PIXEL BULLET	5 MEGA PIXEL BOX CAMERA
	ZN-B5DMP58HE	ZN-B6DMP55HE	ZN-C6DHE
Sensor	1/2.8" Sony ExmorR CMOS	1/1.8" Sony ExmorR CMOS	
Compression format	H.264, MJPEG		
Max. resolution	2048 x 1536 30fp	2592 x 1944 30fps	
Effective pixels	2064 x 1552 (3.20M)	2609 x 1960 (5.11M)	
Compression FPS	2048 x 1536 30fps / 1920 x 1080 60fps		2592 x 1944 30fps / 1920 x 1080 60fps
Lens	Motorized w/ P-iris f=3~10.5mm, F1.4	Motorized w/ P-iris f=3.6~10mm, F1.5	C/CS Mount
Horizontal FOV	84 ° (wide) 30° (tele)	81 ° (wide) 37° (tele)	-
Iris control	P-iris		Manual / DC Auto Iris
S/N ratio	48 dB or more		
Video output	Composite Output(BNC), 75 ohm 1Vpp		
Alarm in-/output	1 / 1 relay		
Audio in-/output	1x Line in / 1x Line out		
Audio codec	G.711 u-law 8kHz		
Day/Night Performance	True Day Night / Removable IR Cut Filter		
WDR Performance	True WDR		
Minimum illumination	0 lux with IR LED ON		0.06 lux (F1.2 / 30IRE)
AGC/BLC/ Defog	YES		
Network interface	10BASE-T, 100BASE-TX, RJ45		
Protocols	IPv4, HTTP, SMTP, UPnP, DNS, RTSP, DDNS, RTP, TCP, UDP, RTCP, DHCP, ARP, FTP, IGMP, ICMP, NTP		
Alarm Trigger	E-mail notification (Snapshot), FTP transfer (Snapshot), External Alarm Out		
Event functions	VMD, External Alarm input		
Micro SD Storage	SD / SDHC, up to 32GB (not included)		
Motion detection	User set 4 ROI(Region Of Interest), 30 Step Sensitivity		
Power source	12VDC / 24VAC		
PoE	IEEE 802.3af Class3		
Power consumption	855mA @ 12VDC, 10.3W /870mA @ 24VAC, 12.9W /250mA @ PoE, 12W	890mA @ 12VDC, 10.8W /900mA @ 24VAC, 13.3W /260mA @ PoE, 12.5W	372mA @ 12VDC, 4.5W /196mA @ 24VAC, 4.7W /94.4mA @ PoE, 4.5W
Operating environment	-40°C ~ 50°C (-40°F~122°F)		0°C ~ 40°C (32°F~104°F)
Heater	3W ceramic heater		-
Fan	1		-
IR LEDs	42 IR LEDs		-
Weight	3.2 lb / 1.44kg		0.7 lb / 316g
Dimensions	3.3" x 11.4" (L), Bracket: 4.8" ø / 82.5 ø x 290mm (L), Bracket:123mm		2.5" (W) x 2.4" (D) x 4.8" (L) 64.6 (W) x 60.3 (D) x 122.4 (L) mm
Certifications	OnVIF (Profile S), IP66		OnVIF (Profile S),

# BULLET CAMERAS



	OUTDOOR BULLET	OUTDOOR BULLET	OUTDOOR BULLET
	ZN-B1A	ZN-B2MTP	ZN-B2MTP-2
Sensor	1/2.5" Progressive Scan CMOS	1/2.8" SONY CMOS Sensor IMX-122	1/2.8" SONY CMOS Sensor IMX-122
Compression format	H.264, MJPEG	H.264, MJPEG	H.264, MJPEG
Max. resolution	D1	1080p	1080p
Effective pixels	2112(H) x 1728(V) Max.	1984(H) x 1225(V)	1984(H) x 1225(V)
Compression FPS	30fps@D1	30fps @ HD 1080p	30fps @ HD 1080p
Lens	3.3mm - 12mm Varifocal, F1.6	3.0mm - 9.0mm F1.2 with <b>ProSet</b> Motorized Focus & Zoom	10-23mm Lens F1.6 with <b>ProSet</b> Motorized Focus & Zoom
Horizontal FOV	86.1° ~ 23.1°	104.2° ~ 35.5°	30.5° ~ 13.2°
Iris control	DC auto iris	P-Iris	P-Iris
S/N ratio	>50dB	>48.8dB	>48.8dB
Video output	Composite Output (BNC), 75Ω 1Vpp (for installation)	Composite Output (BNC), 75Ω 1Vpp (for installation)	Composite Output (BNC), 75Ω 1Vpp (for installation)
Alarm in-/output	1x Alarm In, 1x Alarm Out	1x Alarm In, 1x Alarm Out	1x Alarm In, 1x Alarm Out
Audio in-/output	1x Audio In, 1x Audio Out	1x Audio In, 1x Audio Out	1x Audio In, 1x Audio Out
Audio codec	G.711	G.711	G.711
Day/Night Performance	True Day/Night	True Day/Night	True Day/Night
Minimum illumination	Color: 1.06 lux (F1.6, 30 IRE), B/W: 0 lux (F1.6, Slow Shutter / IR ON, 30 IRE)	Color: 0.16 lux (F1.2, 50IRE) B/W: 0 lux (IR on)	Color: 0.29 lux (F1.6, 50 IRE), B/W: 0 lux IR LED ON
AGC/BLC	Yes / Yes	Yes / Yes	Yes / Yes
Network interface	10BASE-T, 100BASE-TX, RJ45	10BASE-T, 100BASE-TX, RJ45	10BASE-T, 100BASE-TX, RJ45
Protocols	IPv4, HTTP, HTTPS, SMTP, UPnP, DNS, Dynamic DNS, NTP, RTSP, RTP, TCP, UDP, IGMP, RTCP, ICMP, DHCP, ARP		
Security	Password protection, HTTPS, IP-Adress filtering		
Event functions	E-Mail-Notification, FTP-Transfer, Videostream with alarm status, Pre/Post Alarm		
Remote access	Internet Explorer 7.0+, Firefox, Chrome, Smartphone		
Micro SD Storage	Built-in SD slot	Built-in SD slot	Built-in SD slot
Motion detection	User set 4 ROI (Region of Interest), 10 Step Sensitivity		
Power source	12VDC, 24VAC {24VAC (50Hz/60Hz), required for heater}	24VAC	
PoE	Support (IEEE 802.3af)		
Power consumption	12VDC 625mA / 7.5W max / 24VAC 7.3W max, PoE 151mA / 7.2W max	24VAC max.1.63A, PoE max.220mA, UL Listed	
Operating environment	-4°F ~ 122°F	14°F ~ 122°F (-10°C ~ 50°C) / with Heater -40°F ~ 122°F (-40°C ~ 50°C)	
Housing/ IP Rating/ IR LEDs	Aluminium / IP66 / 42 IR LEDs		
Weight	1.6 lbs.	4.1 lbs	4.1 lbs
Dimensions	7.4" (W) x 3.6" (H) x 3.4" (D)	Camera & Bracket 11.7"Lx 3.3 Ø	
Certifications	CE, FCC, UL, OnVIF, WEEE, IP66, UL Listed		

## 3 AND 5 MEGAPIXEL DOMES

# GANZ PixelPro



	INDOOR DOME	INDOOR DOME	OUTDOOR DOME	OUTDOOR DOME
	ZN-D5DMP58LHE	ZN-D6DMP55LHE	ZN-D5DTMP58LHE	ZN-D6DTMP55LHE
Sensor	1/2.8" Sony ExmorR CMOS	1/1.8" Sony ExmorR CMOS	1/2.8" Sony ExmorR CMOS	1/1.8" Sony ExmorR CMOS
Compression format	H.264, MJPEG			
Max. resolution	3MP	5MP	3MP	5MP
Effective pixels	2064 x 1552 (3.20M)	2609 x 1960 (5.11M)	2064 x 1552 (3.20M)	2609 x 1960 (5.11M)
Compression FPS				
Lens	Motorized with P-iris, 3~10.5mm, F1.4	Motorized with P-iris, 3.6~10mm, F1.5	Motorized with P-iris, 3~10.5mm, F1.4	Motorized with P-iris, 3.6~10mm, F1.5
Horizontal FOV	84° (wide), 30° (tele)	81° (wide), 37° (tele)	84° (wide), 30° (tele)	84° (wide), 30° (tele)
Iris control	P-iris			
S/N ratio	48 dB or more			
Video output	Composite Output (BNC), 75 ohm 1Vpp			
Alarm in-/output	1 / 1 relay			
Audio in-/output	1x Line in /1x Line out			
Audio codec	G.711 u-law 8kHz			
Day/Night Performance	True Day / Night			
WDR Performance	True WDR			
Minimum illumination	0 lux with IR LED ON			
AGC/BLC/ Defog	yes			
Network interface	10BASE-T, 100BASE-TX, RJ45			
Protocols	IPv4, HTTP, SMTP, UPnP, DNS, RTSP, DDNS, RTP, TCP, UDP, RTCP, DHCP, ARP, FTP, IGMP, ICMP, NTP			
Alarm Trigger	VMD, External Alarm input			
Event functions	E-mail notification (Snapshot), FTP transfer(Snapshot), External Alarm Out			
Micro SD Storage	SD / SDHC, up to 32GB (not included)			
Motion detection	User set 4 ROI(Region Of Interest), 30 Step Sensitivity			
Power source	12VDC / 24 VAC			
PoE	IEEE 802.3af Class3			
Power consumption	710mA @ 12VDC, 8.6W, 570mA @ 24VAC, 8.1W, 160mA @ PoE, 7.7W	730mA @ 12VDC, 8.8W, 600mA @ 24VAC, 8.5W, 160mA @ PoE, 7.7W	830mA @ 12VDC, 9.9W, 830mA @ 24VAC, 12.5W, 242mA @ PoE, 11.6W	850mA @ 12VDC, 10.2W, 880mA @ 24VAC, 13.2W, 250mA @ PoE, 12W
Operating environment	32°F~104°F / 0°C ~ 40°C		-40°F~122°F / -40°C ~ 50°C	
Heater	-		yes	
IR LEDs	Smart IR, 18 pieces, Auto / Off			
Weight	1.2 lb / 554g		2.7 lb 1.21kg	
Dimensions	5.9 ø x 3.9 H / 151mm ø x 100mm (H)		5.3" ø x 5.7" (H) / 135mm ø x 145mm (H)	
Certifications	CE, FCC, OnVIF (S)	CE, FCC, OnVIF (S)	IP66, CE, FCC, OnVIF (S)	IP66, CE, FCC, OnVIF (S)

# INDOOR DOMES



	VGA INDOOR DOME	720p INDOOR DOMES		1080p INDOOR DOMES	
	ZN-D1A	ZN-D1MTP	ZN-D1MTP-IR	ZN-D2MTP	ZN-D2MTP-IR
Sensor	1/2.5" SONY CMOS Sensor IMX-122	1/2.8" SONY CMOS Sensor IMX-122		1/2.8" SONY CMOS Sensor IMX-122	
Compression format	H.264, MJPEG	H.264, MJPEG		H.264, MJPEG	
Max. resolution	VGA	720p		1080p	
Effective pixels	640(H) x 480(V)	1984(H) x 1225(V)		1984(H) x 1225(V)	
Compression FPS	1fps ~ 30fps	1fps ~ 30fps		1fps ~ 30fps	
Lens	3.3mm - 12mm Vari-focal, F1.6	3.0mm - 9.0mm, F1.2 with <b>ProSet</b> Motorized Focus & Zoom			
Horizontal FOV	89.8° ~ 23.9°	90° ~ 31.8°			
Iris control	DC Auto Iris	P-Iris		P-Iris	
S/N ratio	>48.8dB	>48.8dB		>48.8dB	
Video output	Composite Output (BNC), 75Ω 1Vpp (for installation)				
Alarm in-/output	1x Alarm In, 1x Alarm Out	1x Alarm In, 1x Alarm Out		1x Alarm In, 1x Alarm Out	
Audio in-/output	1x Audio In, 1x Audio Out	1x Audio In, 1x Audio Out		1x Audio In, 1x Audio Out	
Audio codec	G.711	G.711		G.711	
Day/Night Performance	True Day/Night	True Day/Night		True Day/Night	
Minimum illumination	Color: 0.83 lux B/W: 0.07 lux (Slow Shutter ON)	Color: 0.21 lux (F1.2, 50IRE), B/W: 0.06 lux (F1.2, slow shutter on, 50IRE)	Color: 0.21 lux (F1.2, 50IRE), B/W: 0 lux (IR on)	Color: 0.21 lux (F1.2, 50IRE) B/W: 0.06 lux	Color: 0.21 lux (F1.2, 50IRE) B/W: 0 lux (IR on)
AGC/BLC	Yes / Yes	Yes / Yes		Yes / Yes	
Network interface	10BASE-T, 100BASE-TX, RJ45	10BASE-T, 100BASE-TX, RJ45		10BASE-T, 100BASE-TX, RJ45	
Protocols	IPv4, HTTP, HTTPS, SMTP, UPnP, DNS, Dynamic DNS, NTP, RTSP, RTP, TCP, UDP, IGMP, RTCP, ICMP, DHCP, ARP	IPv4, HTTP, HTTPS, SMTP, UPnP, DNS, DynamicDNS, NTP, RTSP, RTP, TCP, UDP, IGMP, RTCP, ICMP, DHCP, ARP			
Security	Password protection, HTTPS, IP-Adress filtering				
Event functions	E-Mail-Notification (snapshot), FTP-Transfer (snapshot), Videostream with alarm status				
Remote access	Internet Explorer 7.0+, Firefox, Chrome, Smartphone				
Micro SD Storage	Built-in SD slot	-		-	
Motion detection	4 regions, 10 sensitivity steps				
Power source	12VDC, 24VAC (50Hz/60Hz), UL Listed	12VDC, 24VAC (50Hz/60Hz), UL Listed		12VDC, 24VAC (50Hz/60Hz), UL Listed	
PoE	Support (IEEE 802.3af)	Support (IEEE 802.3af)		Support (IEEE 802.3af)	
Power consumption	12VDC max. 460mA / 24V max 5.4W / PoE max. 120mA	12VDC max. 630mA, 7.6W / 24VAC max 500mA, 7.5W / PoE max. 150mA, 12VDC max. 500mA, PoE 140mA / Max 6.7W (IEEE 802.3af compliant)			
Operating environment	32°F ~ 104°F	32°F ~ 104°F		32°F ~ 104°F	
Housing / IR LED	Polycarbonate	Polycarbonate	Polycarbonate /18 IR LEDs	Polycarbonate	Polycarbonate /18 IR LEDs
Weight	0.9 lbs.	0.9 lbs.		0.9 lbs.	
Dimensions	4.5" (H) x 4.9"Ø / 113mm (H) x 124.7mm Ø				
Certifications	ONVIF, CE, FCC, WEEE, UL Listed				



## OUTDOOR DOMES




	VGA OUTDOOR DOME	720p OUTDOOR DOMES		1080p OUTDOOR DOMES	
	ZN-DT1A	ZN-DT1MTP	ZN-DT1MTP-IR	ZN-DT2MTP	ZN-DT2MTP-IR
Sensor	1/2.5" SONY CMOS Sensor	1/2.8" SONY CMOS Sensor		1/2.8" SONY CMOS Sensor	
Compression format	H.264, MJPEG	H.264, MJPEG		H.264, MJPEG	
Max. resolution	VGA	720p		1080p	
Effective pixels	640(H) x 480(V)	1280(H) x 1024(V)		1984(H) x 1225(V)	
Compression FPS	2.5fps ~ 30fps	1fps ~ 30fps		1 fps ~ 30fps	
Lens	3.3mm - 12mm, F1.6	3.0mm - 9.0mm, F1.2 with <b>ProSet</b>		3.0mm - 9.0mm, F1.2 with <b>ProSet</b>	
Horizontal FOV	89.8° ~ 23.9°	90° ~ 31.8°			
Iris control	DC Auto Iris	P-Iris		P-Iris	
S/N ratio	>48.8dB	>48.8dB		>48.8dB	
Video output	1 x BNC 1 Vp-p/75Ω (for installation)				
Alarm in-/output	1 / 1	1 / 1		1 / 1	
Audio in-/output	1 / 1	1 / 1		1 / 1	
Audio codec	G.711	G.711		G.711	
Day/Night Performance	True Day/Night	True Day/Night		True Day/Night	
Minimum illumination	Color: 0.83 lux B/W: 0.07 lux	Color: 0.21 lux (F1.2, 50IRE), B/W: 0.06 lux (F1.2, slow shutter on, 50IRE)	Color: 0.21 lux (F1.2, 50IRE), B/W: 0 lux (IR on)	Color: 0.21 lux (F1.2, 50IRE), B/W: 0.06 lux (F1.2, slow shutter on, 50IRE)	Color: 0.21 lux (F1.2, 50IRE), B/W: 0 lux (IR on)
AGC/BLC	Yes / Yes	Yes / Yes		Yes / Yes	
Network interface	10/100 Base T	10/100 Base T		10/100 Base T	
Protocols	IPv4, HTTP, HTTPS, SMTP, UPnP, DNS, Dynamic DNS, NTP, RTSP, RTP, TCP, UDP, IGMP, RTCP, ICMP, DHCP, ARP				
Security	Password protection, HTTPS, IP-Address filtering				
Event functions	E-Mail-Notification (snapshot), FTP-Transfer (snapshot), Videostream with alarm status				
Remote access	IE 7.0+, Firefox, Chrome, Smartphone				
Micro SD Storage	Built-in SD slot	-		-	
Motion detection	4 regions, 10 sensitivity steps				
Power source	12VDC, 24VAC (50Hz/60Hz) required for heater, UL Listed				
PoE	Support (IEEE 802.3af)				
Power consumption	12VDC max. 840mA, PoE max. 110mA				
Operating environment	0°F ~ 122°F / -20°F ~ 122°F with optional heater (ZNA-HD1, VGA model / ZNA-HD2 for ZN-DT*MTP-* models)				
Housing /Color / IR	Aluminium	Aluminium / 18 IR LEDs (*-IR)		Aluminium/ 18 IR LEDs (*-IR)	
Weight	2.4 lbs.	2.4 lbs.		2.4 lbs.	
Dimensions	4.8" (H) x 5.7"Ø				
Certifications	ONVIF Profile S, CE, FCC, WEEE, UL Listed, IP66				

# INDOOR & OUTDOOR DOME ACCESSORIES



**3/5 MP OUTDOOR DOMES**  
**ZN-D5DTMP58LHE, ZN-D6DTMP55LHE**



ZNA-WMB3A	ZNA-CMB3A	ZNA-ICB3A
Wall Mount Bracket for ZN-D5DTMP58LHE ZN-D6DTMP55LHE	Ceiling Mount Bracket for ZN-D5DTMP58LHE ZN-D6DTMP55LHE	Flush mount adaptor ZN-D5DTMP58LHE ZN-D6DTMP55LHE



**INDOOR DOME**  
**ZN-D1A, ZN-D1MTP, ZN-D2MTP**



ZC-FM3A	ZC7-PM1	ZC7-WM1
Flush Mount Adapter for ZN-D1A, ZN-D1MTP, ZN-D2MTP	Pendant Mount for ZN-D1A, ZN-D1MTP, ZN-D2MTP (3/4" NPT Pipe)	Wall Mount for ZN-D1A, ZN-D1MTP, ZN-D2MTP



**OUTDOOR DOME**  
**ZN-DT1A, ZN-DT1MTP, ZN-DT2MTP**



ZNA-CA1	ZNA-HD2	ZNA-WM2A	ZCA-GAP
Pendant Cap for PixelPro ZN-DT1A, ZN-DT1MTP, ZN-DT2MTP (1 1/4" NPT Pipe)	Heater Option for ZN-DTxMPT Series Vandal Domes	Wall Mount Adapter for PixelPro ZN-DT1A, ZN-DT1MTP, ZN-DT2MTP	4S Box Adapter for ZNA-WM2A



**OUTDOOR MINI DOME**  
**ZN-MD2xxM**



ZNA-MDPM1	WML-1
Pendant Mount for ZN-MD221M, ZN-MD243M	Wall Bracket for ZN-MD221M, ZN-MD243M

## MINI CAMERA SERIES



	OUTDOOR MINI DOME		INDOOR MINI DOME		INDOOR MINI AUTO-FOCUS	OUTDOOR MINI BULLET	
	ZN-MD221M	ZN-MD243M	ZN-MDI243M-IR	ZN-MDI260M-IR	ZN-M2AF	ZN-MB243M	ZN-MB260M
Sensor	1/2.8" Progressive Scan CMOS		1/2.8" Sony Exmor CMOS		1/2.8" Sony IMX-036 CMOS	1/2.8" Progressive Scan CMOS	
Compression format	H.264, MJPEG		H.264, MJPEG		H.264, MJPEG	H.264, MJPEG	
Max. resolution	1080p		1080p		1080p	1080p	
Effective pixels	2096 x 1561		1984 x 1225		2096 x 1561	1984 x 1225	
Compression FPS	1 fps - 30 fps		1 fps - 30 fps		1 fps - 30 fps	1 fps - 30 fps	
Lens	2.1mm, F2.0	4.0mm, F2.0	4.0mm, F2.0	6.0mm, F2.0	5.0-25mm, F3.5, Autofocus / 5x Zoom	4.0mm, F2.0	6.0mm, F2.0
Horizontal FOV	132.6°	71.5°	84.4°	53.3°	51.3° ~ 11.0°	84.4°	53.3°
Iris control	-		-		-	-	
S/N ratio	50dB or more		50dB or more		50dB or more	50dB or more	
Video output	1 x Composite 1 Vp-p/75Ω (for installation)						
Day/Night	Digital Day/Night		True Day/Night		True Day/Night	True Day/Night	
Minimum illumination	0.14 lux (F2.0 / 30IRE (Color))		0.63 lux (F2.0 / 50IRE (Color), 0 Lux (IR LED on))		3.8 lux (F3.5 / 50IRE (Color), AGC high / 0.08 lux (F3.5 / 50IRE (b/w), AGC high)	0.63 lux (F2.0 / 50IRE (Color)) 0 Lux (IR LED on)	
Shutter	1/4 ~ 1/2000s		1/4 ~ 1/2000s		1/4 ~ 1/2000s	1/4 ~ 1/2000s	
DNR	2D		2D		2D	2D	
DPC	Yes		Yes		Yes	Yes	
AGC/BLC	Yes / Yes		Yes / Yes		Yes / Yes	Yes / Yes	
Network interface	10/100 Base T						
Protocols	IPv4, HTTP, SMTP, UPnP, DNS, Dynamic DNS, NTP, RTSP, RTP, TCP, UDP, RTCP, DHCP				IPv4, HTTP, SMTP, UPnP, DNS, RTSP, DDNS, RTP, TCP, UDP, RTCP, DHCP, ARP, NTP		
Security	Password protection						
Event functions	E-Mail-Notification (Snapshot), FTP-Transfer (Snapshot), Videostream with alarm status				E-Mail-Notification, FTP-Transfer, Videostream with alarm status		
Remote access	IE 7.0+, Firefox, Chrome, Smartphone						
Micro SD Storage	-		-		-	-	
Motion detection	4 regions, 10 sensitivity steps						
PoE	Support (IEEE 802.3af)						
Power consumption	70mA, max. 3.4W		70mA, max. 3.4W / 100mA, max 4.8W (IR on)		114mA@48VDC, max. 5.28W	70mA, max. 3.4W / 100mA, max 4.8W (IR on)	
Operating environment	14°F~122°F		-14°F ~113°F		32°F ~122°F	-14°F ~122°F	
Housing / IR LED	Aluminium, IP66		Polycarbonate / 2 IR LEDs		Aluminium	Aluminium / IP66 / 18 IR LEDs	
Weight	0.8 lbs.		0.7 lbs.		0.4 lbs.	0.7 lbs.	
Dimensions	4.3"ø x 2.7"H		5.1"ø x 3"H		2" W x 1.9"H x 2.5" L	2.3"ø x 3.3"H (without bracket)	
Certifications	CE, FCC, UL, WEEE, OnVIF (Profile S), IP66, UL Listed		CE, FCC, WEEE, OnVIF (Profile S), UL Listed		CE, FCC, UL, WEEE, OnVIF (Profile S)	CE, FCC, UL, WEEE, OnVIF (Profile S), IP66	

See page 18 for Outdoor Mini Dome mounting accessories

# MINI CAMERA SERIES

## GANZ PixelPro



	OUTDOOR MINI BULLET	OUTDOOR MINI BULLET	OUTDOOR MINI DOME	INDOOR MINI DOME
	<b>ZN-N4NFN5</b> <b>ZN-N4NFN9</b>	<b>ZN-N4NVD56</b>	<b>ZN-M4NTFN3L</b> <b>ZN-M4NTFN4L</b> <b>ZN-M4NTFN9L</b>	<b>ZN-M4NFN3L</b> <b>ZN-M4NFN4L</b> <b>ZN-M4NFN9L</b>
Sensor	1/2.9" Sony ExmorR CMOS	1/2.8" Sony Exmor CMOS	1/2.8" Sony ExmorR CMOS	1/2.9" Sony Exmor CMOS
Compression format	H.264, MJPEG			
Max. resolution	1080p	1080p	1080p	1080p
Effective pixels	1984(H) x 1105(V)	1984(H) x 1105(V)	1984(H) x 1105(V)	1984(H) x 1105(V)
Compression FPS	1 fps ~ 30 fps			
Lens	Fixed ZN-N4NFN5, 4mm F1.8 ZN-N4NFN9, 6mm, F1.8	Varifocal 2.8-12mm, F1.4 DC-Iris	Fixed ZN-M4NTFN3L, 2.8mm F1.8, ZN-M4NTFN4L, 3.6mm F1.8, ZN-M4NTFN9L, 6mm F1.8	Fixed ZN-M4NFN3L, 2.8mm F1.8, ZN-M4NFN4L, 3.6mm F1.8, ZN-M4NFN9L, 6mm F1.8
Horizontal FOV	ZN-N4NFN5 - 81° ZN-N4NFN9 - 51°	96° (wide) 34° (tele)	ZN-M4NTFN3L, 109° ZN-M4NTFN4L, 86° ZN-M4NTFN9L, 43°	ZN-M4NFN3L - 109° ZN-M4NFN4L - 86° ZN-M4NFN9L - 43°
Iris control	Fixed Iris	DC Iris	Fixed Iris	Fixed Iris
S/N ratio	48 dB or more			
Video output	Composite Output (BNC), 75 ohm 1Vpp			
Alarm in-/output	-	-	1/1	1
Audio in-/output	-	1 / -	-	-
Audio codec	-	G.711 u-law 8kHz	-	-
Day/Night Performance	True Day / Night			
WDR Performance	D- WDR			
Minimum illumination	0 lux with IR LED ON			
AGC/BLC/ Defog	yes			
Network interface	10BASE-T, 100BASE-TX, RJ45			
Protocols	IPv4, HTTP, SMTP, UPnP, DNS, RTSP, DDNS, RTP, TCP, UDP, RTCP, DHCP, ARP, FTP, IGMP, ICMP, NTP			
Alarm Trigger	VMD		VMD, External Alarm Input	VMD
Event functions	E-mail notification (Snapshot), FTP transfer (Snapshot)		E-mail notification (Snapshot), FTP transfer (Snapshot), External Alarm Out	
Micro SD Storage	-	-	-	SD / SDHC slot, up to 32GB (not included)
Motion detection	User set 4 ROI (Region Of Interest), 30 Step Sensitivity			
Power source	12VDC / 24 VDC			
PoE	IEEE 802.3af Class3			
Power consumption	710mA @ 12VDC, 8.6W, 570mA @ 24VAC, 8.1W, 160mA @ PoE, 7.7W	730mA @ 12VDC, 8.8W, 600mA @ 24VAC, 8.5W, 160mA @ PoE, 7.7W	830mA @ 12VDC, 9.9W, 830mA @ 24VAC, 12.5W, 242mA @ PoE, 11.6W	850mA @ 12VDC, 10.2W, 880mA @ 24VAC, 13.2W, 250mA @ PoE, 12W
Operating environment	32°F~104°F / 0°C ~ 40°C		-40°F~122°F / -40°C ~ 50°C	
Heater	-		yes	
IR LEDs	30	36	1	15
Weight	554g		1.21kg	
Dimensions	5.9" ø x 3.9" / 151mm x 100mm (H)		5.3" ø x 5.7" (H) / 135 ø x 145mm (H)	
Certifications	IP66, CE, FCC, OnVIF (Profile S)		IP66, CE, FCC, OnVIF (Profile S)	CE, FCC, OnVIF (Profile S)

# EASY INSTALL DOMES



	INDOOR EASY INSTALL MINI PTZ	INDOOR EASY INSTALL IR FIXED MINI	INDOOR EASY INSTALL MINI PTD
	MPTZ5XFM	MF21M4TIRFM	MPTDFM
Sensor	1/2. 2.0M Sony CMOS		
Compression format	Triple Codec, H.264/MPEG4/MJPEG		
Max. resolution	1080p / 720p / D1/ CIF / QCIF (MJPEG)		
Effective pixels	1920 x 1080		
Compression FPS	30 fps Max. frame rate for all resolutions		
Lens	5 ~ 25mm, F3.5 ~ F3.7 5x Optical Zoom / 12x Digital Zoom	4mm 12x Digital Zoom	4mm 12x Digital Zoom
Horizontal FOV	49.2° W ~ 10.52° T	86°	86°
Iris control	Manual Fixed		
S/N ratio	True WDR 100dB		
Video output	-		
Alarm in-/output	1 / 1		
Audio in-/output	1 / 1		
Audio codec	Two way, G.711 PCM. $\mu$ -law 64kbps 8kHz		
Day/Night Performance	True Day/Night		
Minimum illumination	Color: 2.8 Lux@ F3.5, 30 IRE B/W: 0.9 Lux @ F3.5, 30 IRE	12.4 Lux (F1.6, 30IRE), 0.5 Lux 30IRE), IR (F1.6, 0.00 Lux (IR LED ON)	Color: 2.4 Lux@ F1.6, 30 IRE B/W: 0.5 Lux@ F1.6, 30 IRE
Dewarping	-		
Pan / Tilt Range	Pan: 355° / Tilt 90° / Rotate 350°	-	Pan: 355° / Tilt 90° / Rotate 350°
Pan / Tilt Speed	Preset: 120° / sec, manual: Max 120° / sec	-	Preset: 120° / sec, manual: Max 120° / sec
Network interface	10/100 Base T		
Protocols	1Pv4/1Pv6, TCP/IP, RTP Multicast. liTTP, DHCP, PPPoE, ICMP, ARP, RARP, RTSP, NTP, SNMP, SMTP, FTP, UPnP, DNS, DONS		
Web Browser	Internet Explorer 7.0 or above, Firefox, Chrome, PDF / Smart Phone		
Micro SD Storage	SDHC memory card (card is not included)		
Motion detection	Notification: FTP, email, Alarm out, JPEG Recording on SD		
Power source	12VDC / PoE		
PoE	Support (IEEE 802.3af)		
Power consumption	6W (Idle) / 9W (Operating)	4W (IR Off), 5W (IR on)	5.6W (Idle) / 8.2W (Operating)
Operating environment	14° F ~122° F / -10°C ~ 50°C		
Housing / Color / IR	Drop Ceiling /Quick Installation	Drop Ceiling /Quick Installation. 15 IR LEDs	Drop Ceiling /Quick Installation
Weight	0.8 lbs. / 363g	1.1 lbs./ 500g	1.1 lbs./ 500g
Dimensions	5.9" H x 4.3" $\phi$ /149.2 H x 110mm $\phi$	4.5" x 3.5" $\phi$ / 114mm H x 90mm $\phi$	5.9" $\phi$ x 4.3" /149.2 $\phi$ x 110mm
Certifications	ONVIF (Profile S), CE, FCC, ROHS		

# GENSTAR IP SERIES



**NEW**



**NEW**



**NEW**



**NEW**

	IR MINI BULLET	IR BULLET	IR MINI IR DOME	6 MP 360° FISHEYE DOME
	<b>ZN8-B4NVF56</b>	<b>ZN8-N4NFN4</b>	<b>ZN8-M4NTFN4L</b>	<b>ZN8-F7NTFN10L</b>
Resolution	1080p	1080p	1080p	6MP
Image Sensor	1/3" CMOS	1/3" CMOS	1/3" CMOS	1/1.8" CMOS
Video Compression	H.264, MJPEG	H.264, MJPEG	H.264, MJPEG	H.264, MJPEG
Triple Stream	Yes, configurable	Yes, configurable	Yes, configurable	Yes, configurable
Resolution	1920x1080 @30fps	1920x1080 @30fps	1920x1080 @30fps	3072x2048 @15fps 1920x1080 @30fps
Video Frame Rate	max. 30fps Full-HD	max. 30fps Full-HD	max. 30fps Full-HD	max. 30fps Full-HD
FOV	89° - 35° FOV	75° FOV	75° FOV	360° FOV
Lens	2.8mm - 12mm	3.6mm	3.6mm	1.6mm
Day/Night Performance	True Day/Night	True Day/Night	True Day/Night	True Day/Night
Minimum illumination	0.2 Lux (Color, AGC on) 0 Lux (B/W, IR on)	0.2 Lux (Color, AGC on) 0 Lux (B/W, IR on)	0.05 Lux (Color, AGC on) 0 Lux (B/W, IR on)	0.01 Lux (Color, AGC on), 0 Lux (IR on)
IR LED / Range	(Smart IR), 131' - 164' Range	(Smart IR), 66' - 98' Range	(Smart IR), 20' - 23' Range	(Smart IR), 33' Range
Digital Noise Reduction	2/3DNR	2/3DNR	2/3DNR	2/3DNR
WDR	dWDR	dWDR	dWDR	dWDR
Audio input/output	- / -	- / -	- / -	1 / 1
Audio Codec	-	-	-	G.711, RAW PCM
Network interface	10 / 100 Base-T	10 / 100 Base-T	10 / 100 Base-T	10 / 100 Base-T
Alarm input/output	- / -	- / -	- / -	1 / 1
Protocols	HTTP, HTTPS, TCP/IP, UDP/IP, RTSP, DHCP, NTP, PoE, Unicast / Multicast, ONVIF		HTTP, HTTPS, TCP/IP, UDP/IP, RTSP, DHCP, NTP, PoE, Unicast / Multicast, ONVIF	
HLC	Yes	Yes	Yes	Yes
Motion detection	Yes	Yes	Yes	Yes
ROI	Yes	Yes	Yes	-
Interfaces	RJ-45, BNC	RJ-45	RJ-45	RJ-45
Micro SD Storage	-	-	Micro SD/SDHC slot, Max 32GB (not included)	Micro SD/SDHC slot, Max 64GB (not included)
Power	PoE / 12VDC	PoE / 12VDC	PoE / 12VDC	PoE / 12VDC / 24VAC
Power Consumption	2.5W (IR LED OFF) 5W (IR LED ON)	2.5W (IR LED OFF), 5W (IR LED ON)	2.5W (IR LED OFF) 5W (IR LED ON)	8W max.
Operating environment	-4°F ~ 131°F	-4°F ~ 131°F	-4°F ~ 131°F	-22°F ~ 140°F
Dimensions W x D x H	4.0" x 3.8" x 11.7"	6.7" x 2.8" x 2.4"	2.1" x 3.9" (Ø)	1.8" x 6.3" (Ø)
Weight	1.5 lbs	1.4 lbs	1.4 lbs	1.5 lbs.
Certifications	CE, FCC, IP66, ONVIF (S)	CE, FCC, IP66, ONVIF (S)	CE, FCC, IP65, ONVIF (S)	CE, FCC, IP66, ONVIF (S)

## 6 MP FISHEYE DOME ACCESSORIES



Pendant Mount - ZA8-CBK637



Wall Mount - ZA8-CBK636



# **GANZ** **GENSTAR IP** IP CAMERAS AND NVRs



**HIGH PERFORMANCE.  
LOWER COST  
OF OWNERSHIP.**

[ganzsecurity.com/genstarIP](http://ganzsecurity.com/genstarIP)

# Intelligence Driven by Design



---

**CBC AMERICAS Corp.**  
Corporate Headquarters  
Tel: 1-919-230-8700

West Coast Office  
Tel: 1-310-222-8600

Mexico City Office  
Tel: +52 55 5280 4660

[ganzsecurity.com](http://ganzsecurity.com)



Scan to view mobile catalog

CBC reserves the right to modify product specifications without prior notice and assumes no responsibility for errors in this publication.  
All products mentioned in this publication are acknowledged to be the property of their respective trademark owners.