

CATALOGUE 2015

CCTV PRODUCTS





DOCCTEN1507
Catalogue 2015 / Revision 1507

All cameras and lenses shown are only for demonstration purposes and are not supplied with the products (except for "ULISSE", "ULISSE COMPACT", "NXPTZ/NXPTZT", "MAXIMUS MPX/MPXT", "MAXIMUS MHX/MHXT", "NTC"). Further information are available on the technical data sheets in the product pages at www.videotec.com. The information can't be either completely or partly reproduced, modified or recorded in a filing system and transmitted in any shape or with any electronic, mechanical or recording means, without the written permission of Videotec S.p.A. Specifications are subject to change without notice. Weights and dimensions are indicative.

February 2015. All previous catalogues are herewith obsolete.

VIDEOTEC: A LONG HISTORY OF SUCCESSES

In nearly thirty years of activity in the video surveillance industry, we have designed, created and patented numerous products for monitoring all types of external environment. Today, our company is one of the most respected suppliers in the industry, thanks to our innovation and our development of CCTV solutions that guarantee security and reliability.

A NETWORK PROVIDING PEACE OF MIND FOR EVERY CUSTOMER

The operational and logistical headquarters, covering 13,000 square metres, is located in North-East Italy and, thanks to operational support from branches in France, USA/Canada and the Asia Pacific region, numerous selected partners and a widespread distribution network active in over 100 nations, we are able to provide throughout the world, in real time, a broad and complete range of products and proposals for even the most complex requirements linked to the security of external environments in general.

UNLIMITED FIELDS OF APPLICATION

The field of use of our broad product range is extremely vast: from government applications to surveillance of public or private properties, commercial businesses, banks and prisons. Added to these areas are industrial applications, the control of potentially explosive areas or environments with high temperatures or particularly severe climatic conditions, traffic control systems, urban surveillance and coast and border control.

ABSOLUTE QUALITY

Every Videotec solution is the result of a process of research and design performed by our professional staff in collaboration with international universities and research organisations. This operational methodology has allowed us to experiment, as industry pioneers, with technical technologies and cutting-edge materials, creating absolutely innovative products and solutions.

SECURITY WITHOUT COMPROMISE

Our products are the perfect synthesis of high performance, ease of installation, durability, robustness and attention to design; the result of a passion for excellence that is the distinctive mark of the company.

CONTENTS

PTZ CAMERAS AND PTZ UNITS

9

PTZ CAMERAS AND PTZ UNITS



EX-PROOF PTZ CAMERAS AND UNITS



STAINLESS STEEL PTZ CAMERA



CAMERA HOUSINGS

29

CAMERA HOUSINGS



DISCREET SURVEILLANCE CAMERA HOUSINGS



VANDAL RESISTANT CAMERA HOUSINGS



EX-PROOF CAMERAS AND HOUSINGS



STAINLESS STEEL CAMERAS AND HOUSINGS



P&T MOTORS AND TELEMETRY

47

P&T MOTORS



STAINLESS STEEL PAN & TILT



TELEMETRY



EXPLOSION-PROOF TELEMETRY



ILLUMINATORS

53

ILLUMINATORS



VIDEO CONTENT ANALYSIS

57

VIDEO CONTENT ANALYSIS



VIDEO MANAGEMENT AND CONTROL

63

CONTROL KEYBOARDS



MATRIX



VIDEO DISTRIBUTORS



VIDEO TRANSMISSION

67

VIDEO TRANSMISSION



CAMERA BRACKETS

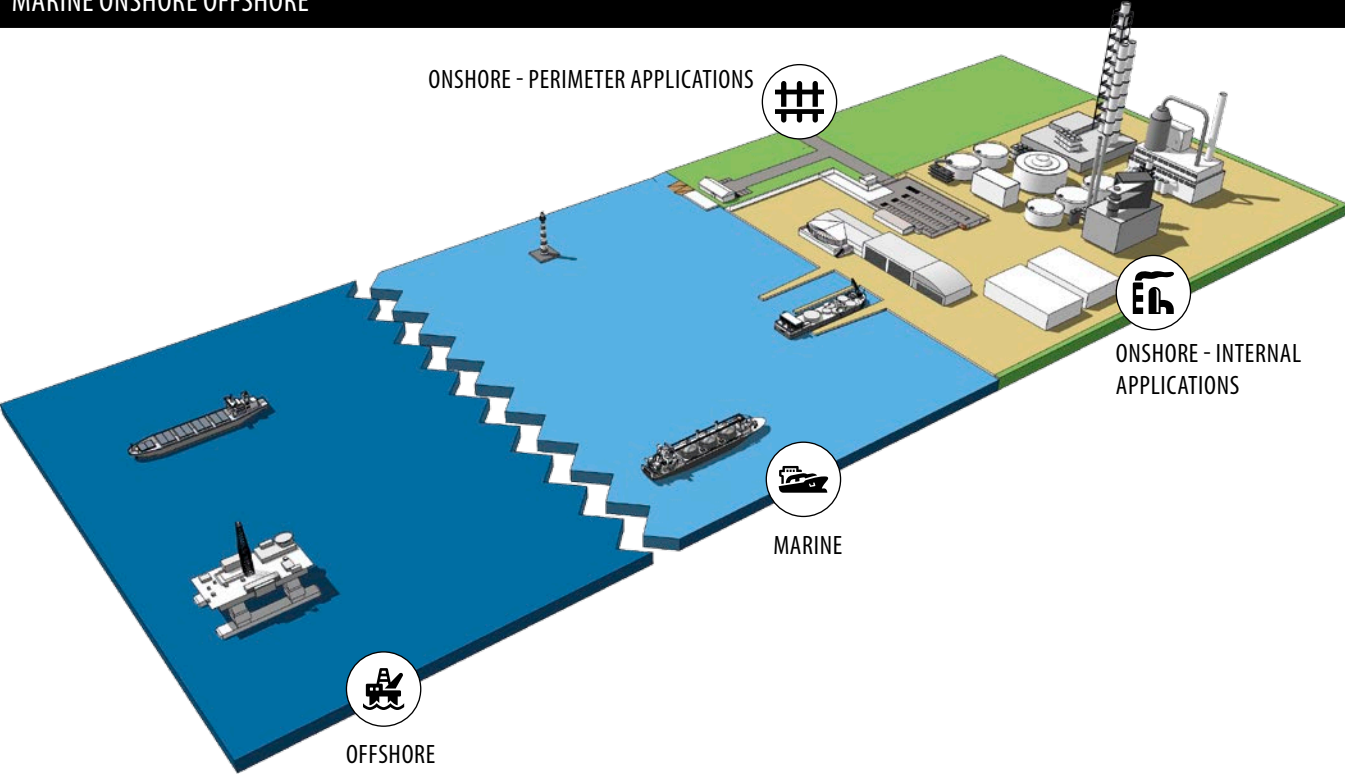
69

CAMERA BRACKETS

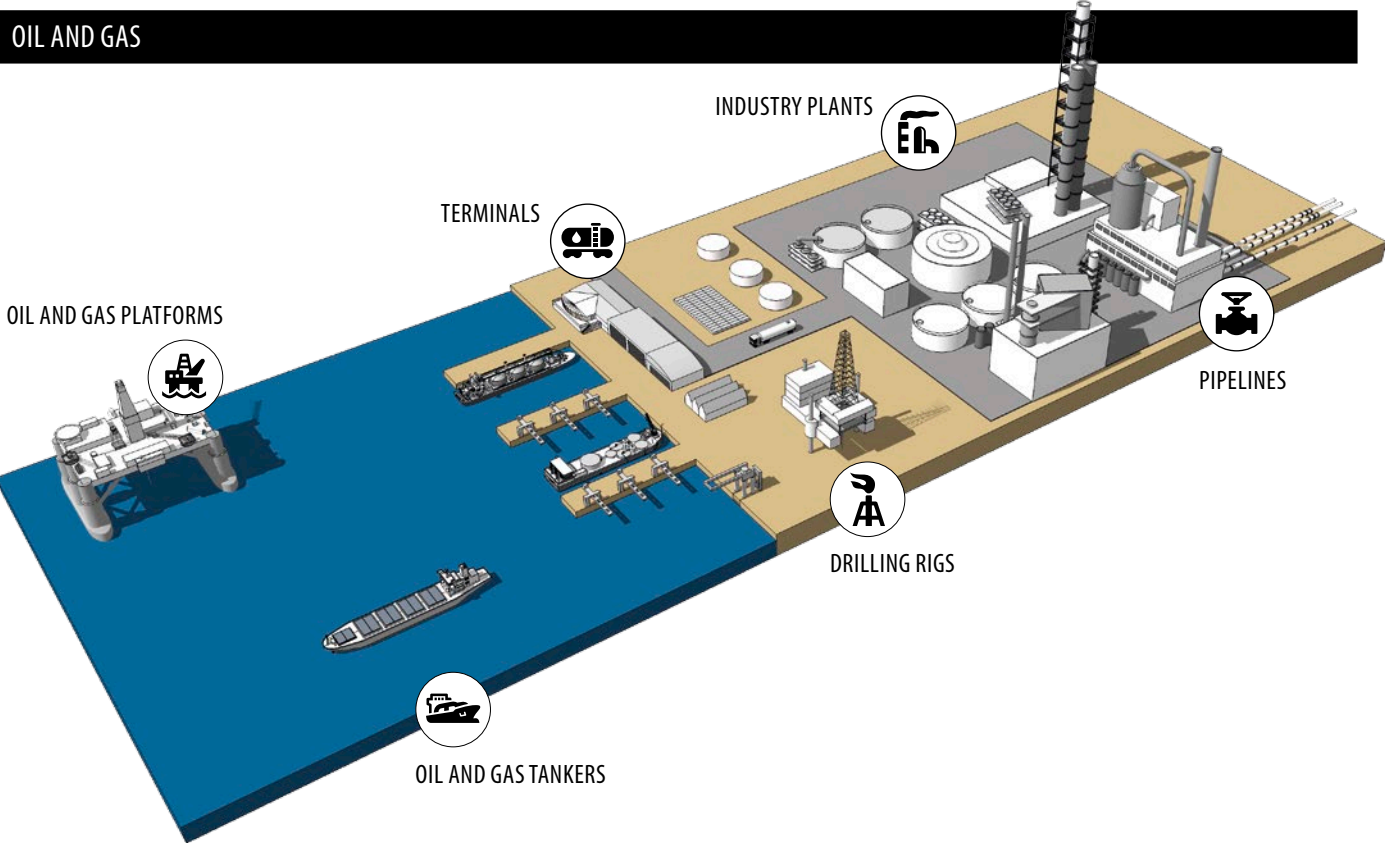


MARKETS

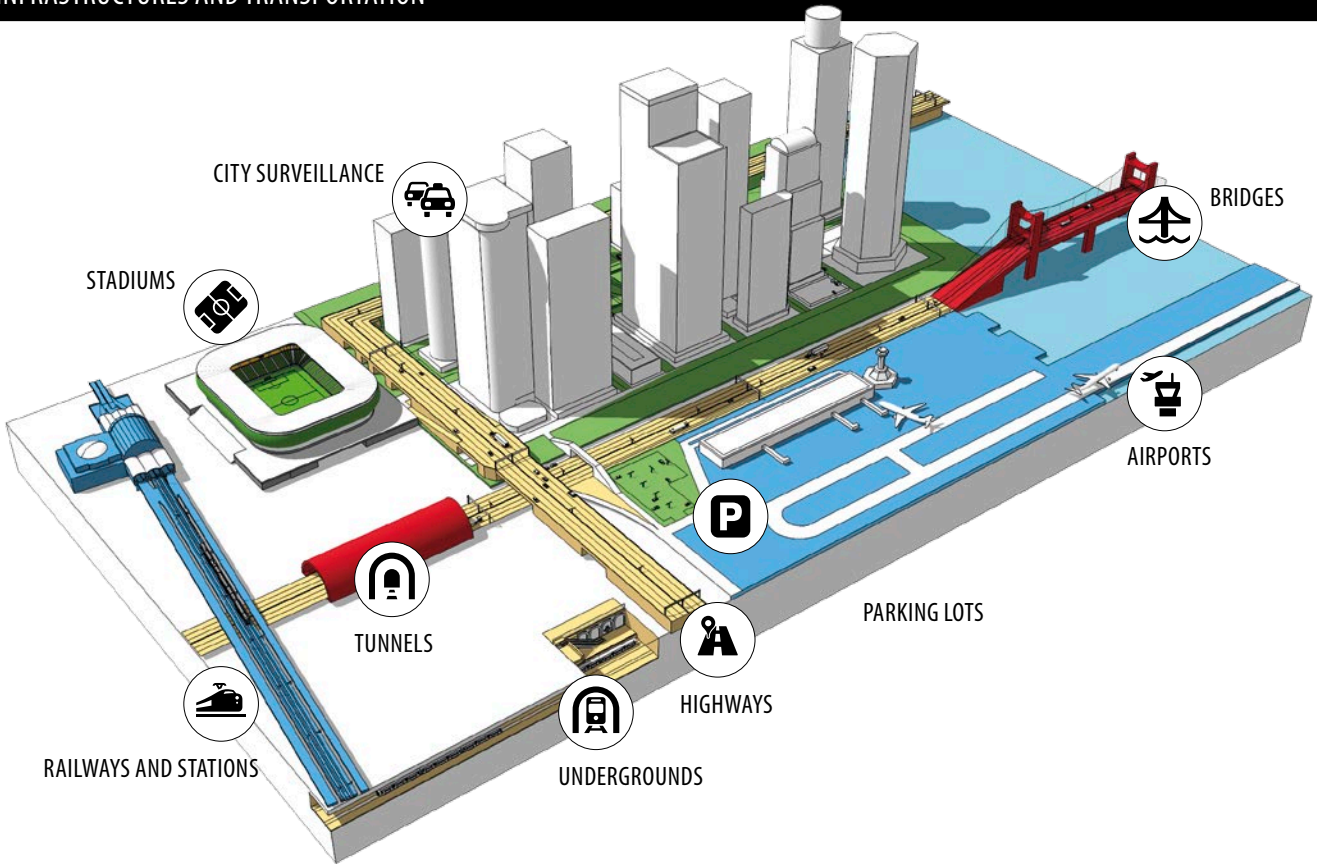
MARINE ONSHORE OFFSHORE



OIL AND GAS



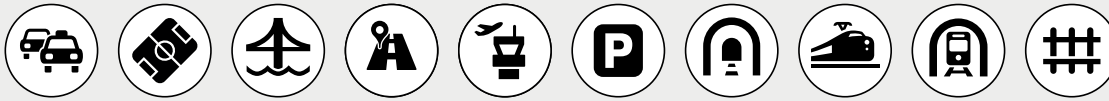
INFRASTRUCTURES AND TRANSPORTATION



PTZ CAMERAS AND PTZ UNITS

PTZ CAMERAS AND PTZ UNITS

PTZ ULISSE cameras and units are the best solution for any type of dynamic outdoor video surveillance application. The accurate and sturdy construction ensures high speed and accurate target detection in any type of environmental condition, with zero maintenance. The wide range includes open IP or analogue architectural models, with a choice of Full HD, day/night and thermal integrated cameras. On the other hand, PTZ units without a camera offer the advantage of managing any type of camera, also network or thermal vision combined with lenses of any dimension, from compact to extra large, thanks to the different sizes of housing, thus solving every installation requirement.



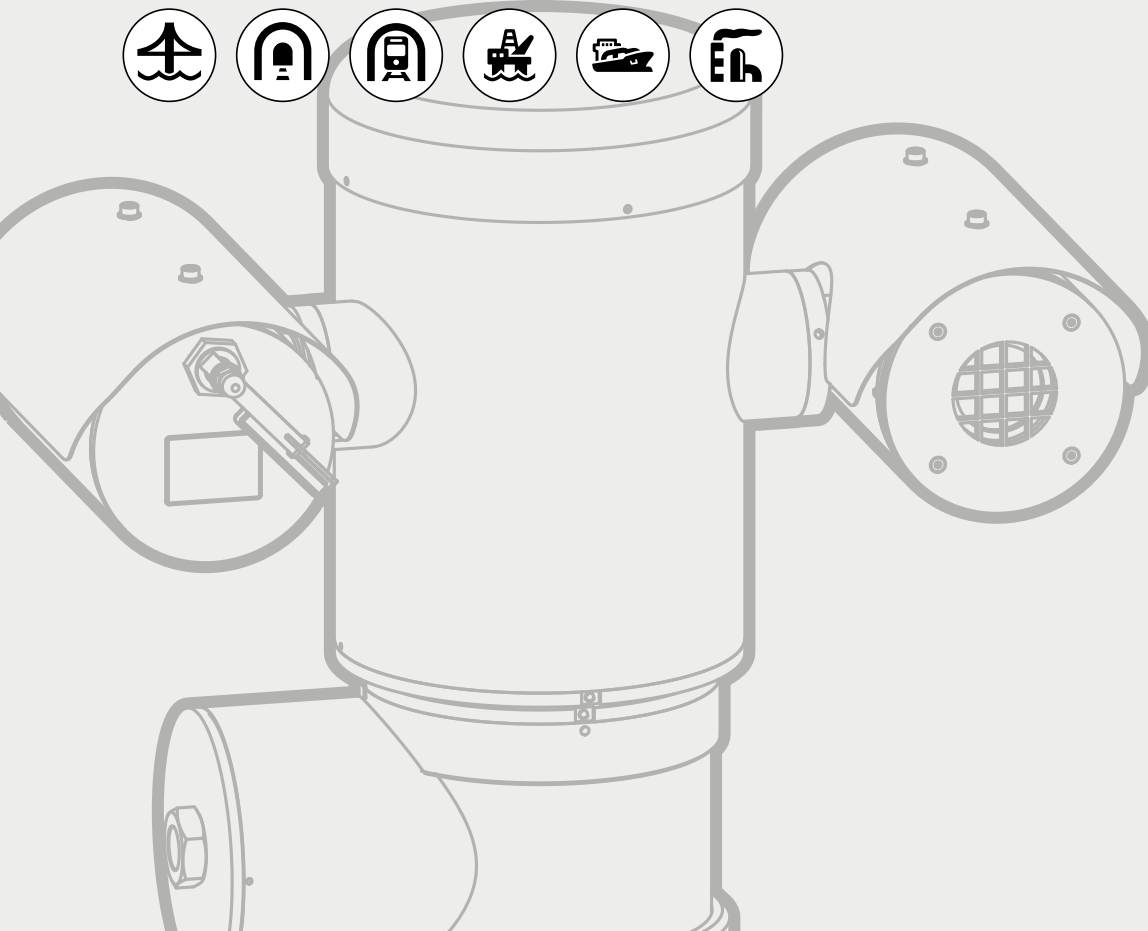
EX-PROOF PTZ CAMERAS AND UNITS

The explosion-proof cameras and PTZ units have been certified and designed to meet strict standards regarding installation in potentially explosive environments, given the presence of gas and flammable dusts. The wide range ensures excellent performance for monitoring critical processes and are thus the perfect video surveillance solutions for chemical, oil and gas industries. Their sturdiness and zero maintenance make these products suitable for use in extreme environmental conditions and offer a level of quality beyond any expectations.



STAINLESS STEEL PTZ CAMERA

The stainless steel housings and P&T's have been designed to protect the cameras from particularly aggressive environmental conditions. They are entirely constructed from AISI 316L stainless steel. In consideration of the extremely severe specifications, each detail has been carefully analysed obtaining very reliable products, suitable for industrial uses. The selection offers a choice of models to work specifically with thermal imaging cameras, utilising Germanium glass and other high-quality substances, the glass becomes invisible to the thermal imaging cameras.



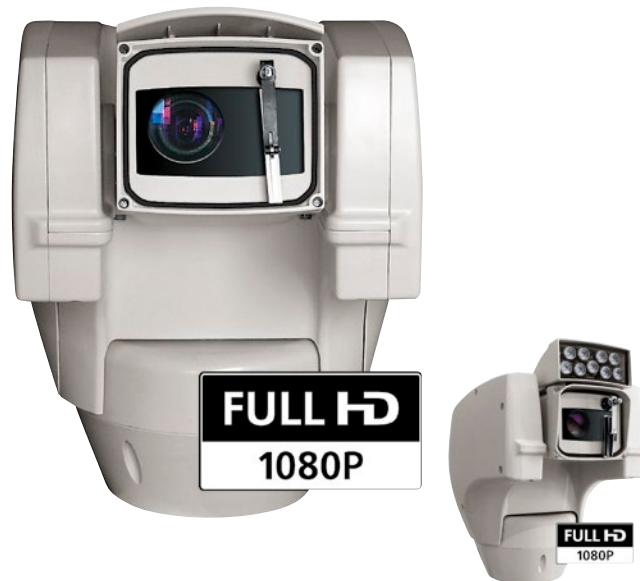
ULISSE COMPACT HD

OUTDOOR FULL HD PTZ CAMERA FOR DETAILED IMAGES AND HIGH-PERFORMANCE



- Variable speed: 0.1°-200°/s Pan/Tilt
- Horizontal continuous rotation, vertical -90°/+90°
- Camera Full HD 1080p, 30x, 60 frames per second (ips)
- Minimum Illumination:
- Colour: 1.4lx, F1.6 AGC on, 1/30s 50 IRE (Normal mode)
- Colour: 0.35lx, F1.6 AGC on, 1/30s, 50 IRE (High Sensitivity mode)
- Video compression H.264/AVC and MJPEG
- Certified ONVIF, Profile S
- Day/Night (Auto ICR: automatic removal of IR filter)
- Up to 4 simultaneous video streams
- 1 alarm input and 1 relay output
- Position accuracy: 0.05°
- Up to 250 Presets
- Integrated wiper
- IP66
- Operating temperature: -40°C / +50°C (-40°F/+122°F)
- Power supply available 230Vac, 24Vac or 120Vac
- OPTIONS:**
- LED illuminator

30x ZOOM



ULISSE COMPACT HD + LED illuminator

ULISSE COMPACT HD- CONFIGURATION OPTIONS

	VOLTAGE			OPTIONS			VIDEO OUTPUT			
UCHD	1	230Vac	F	Day/Night camera 30X zoom, FullHD	W	With wiper, 1 input, 1 output	A	Z	Compression H.264/AVC, ONVIF protocol, Profile S	00A
	2	24Vac			N	With wiper, 1 input, 1 output, IR LED illuminator 10°, 940nm				
	3	120Vac			U	With wiper, 1 input, 1 output, IR LED illuminator 30°, 850nm				
					T	With wiper, 1 input, 1 output, IR LED illuminator 10°, 850nm				
					Z	With wiper, 1 input, 1 output, LED illuminator 30°, white light				

PTZ CAMERAS AND PTZ UNITS

CAMERA HOUSINGS

P&T MOTORS AND TELEMETRY

ILLUMINATORS

VIDEO CONTENT ANALYSIS

VIDEO MANAGEMENT AND CONTROL

VIDEO TRANSMISSION

CAMERA BRACKETS



ULISSE COMPACT HD

High Quality, High Speed, High Security.

ULISSE COMPACT HD is a Full HD 1080p PTZ camera that delivers high quality video and is able to accurately identify specific details of a scene, even in low light and challenging environmental conditions. These PTZ cameras withstand harsh external environments, ensuring high speed. The response to operator commands is immediate.

Thanks to its reliability, robustness and accuracy, this positioning unit is the ideal solution for demanding security applications, including: traffic and highways control, borders, stadiums and industries surveillance, prisons, military installation and perimeter surveillance.



30x
CAMERA



LED
ILLUMINATOR



WIPER



HIGH SPEED



ONVIF Profile S,
H264



-40°C to +50°C

ULISSE COMPACT

OUTDOOR PTZ CAMERA FOR HIGHEST PRECISION DAY/NIGHT MONITORING



Variable speed: 0.1°-200°/s Pan/Tilt

Horizontal continuous rotation, vertical -90°/+90°

IP66

Day/Night camera 36x, 28x or 10x:

- True Progressive Scan (36x)
- High resolution: up to 550 TVLines
- Advanced image stabilizer (Stable Zoom Mode)
- Day/Night (Auto ICR: automatic removal of IR filter)
- Dynamic video masking of different areas

Up to 2 simultaneous video streams

Position accuracy: 0.05°

Up to 250 Presets

Operating temperature: -40°C / +60°C (-40°F / +140°F)

Power supply available 230Vac, 24Vac or 120Vac

OPTIONS:

IP based control, H.264/AVC and JPEG, 25fps, Full D1 (compatible with ONVIF protocol, Profile S)

Complete front flange with heated glass

LED illuminator

Wiper



ULISSE COMPACT + LED illuminator

ULISSE COMPACT - CONFIGURATION OPTIONS

	VOLTAGE	DAY/NIGHT CAMERA		OPTIONS	VIDEO OUTPUT
UC	1 230Vac	P Day/Night camera 36x optical zoom lens, PAL	V With I/O alarm board	S Without accessories	A 0 Analog control 00A
	2 24Vac	Q Day/Night camera 28x optical zoom lens, PAL		W With wiper	Z IP H.264/AVC control, Protocol ONVIF Profile S
	3 120Vac	B Day/Night camera 10x optical zoom lens, PAL		Q With IR LED illuminator 30°, 850nm	
		N Day/Night camera 36x optical zoom lens, NTSC		R With IR LED illuminator 10°, 850nm	
		M Day/Night camera 28x optical zoom lens, NTSC		U With wiper and IR LED illuminator 30°, 850nm	
		K Day/Night camera 10x optical zoom lens, NTSC		T With wiper and IR LED illuminator 10°, 850nm	
				M With IR LED illuminator 10°, 940nm	
				N With wiper and IR LED illuminator IR LED 10°, 940nm	
				Z With wiper and LED illuminator 30°, white light (only with 36x camera)	

PTZ CAMERAS AND PTZ UNITS

CAMERA HOUSINGS

P&T MOTORS AND TELEMETRY

ILLUMINATORS

VIDEO CONTENT ANALYSIS

VIDEO MANAGEMENT AND CONTROL

VIDEO TRANSMISSION

CAMERA BRACKETS

ULISSE COMPACT THERMAL

OUTDOOR PTZ CAMERA DUAL VISION, DAY/NIGHT AND THERMAL, FOR TOTAL DARKNESS MONITORING



- Variable speed: 0.1°-200°/s Pan/Tilt
- Horizontal continuous rotation, vertical -90°/+90°
- IP66
- Dual independent video output
- Complete control via RS485 of both cameras
- Thermal cameras:
 - Sensor: Uncooled microbolometer (VOx)
 - Lenses: 35mm o 25mm
 - Resolution 320x256 or 640x512
 - Image frequency: 8.3Hz or 25Hz
- Day/Night camera 36x or 28x
 - True Progressive Scan (only 36x)
 - High resolution: up to 550 TVLines
 - Advanced image stabilizer (Stable Zoom Mode)
 - Day/Night (Auto ICR: automatic removal of IR filter)
 - Dynamic video masking of different areas
- Position accuracy: 0.05°
- Up to 250 Presets
- Operating temperature: -40°C / +60°C (-40°F / +140°F)
- Integrated wiper
- Power supply available 230Vac, 24Vac or 120Vac



ULISSE COMPACT THERMAL -CONFIGURATION OPTIONS

	VOLTAGE	DAY/NIGHT CAMERA	THERMAL CAMERA		VIDEO OUTPUT	FREQUENCY
UCT	1 230Vac	P Day/Night camera 36x optical zoom lens, PAL	A Thermal camera 35mm - 320x256	W With integrated wiper	A 0 Analog	00A - 7.5-8.3Hz
	2 24Vac	Q Day/Night camera 28x optical zoom lens, PAL	B Thermal camera 25mm - 320x256			H 25-30Hz
	3 120Vac	N Day/Night camera 36x optical zoom lens, NTSC	D Thermal camera 35mm - 640x512			
		M Day/Night camera 28x optical zoom lens, NTSC	E Thermal camera 25mm - 640x512			

ULISSE

OUTDOOR PTZ CAMERAS AND UNITS FOR HIGHEST PRECISION DAY/NIGHT MONITORING



Variable speed: 0.02°-100°/s Pan; 0.02°-40°/s Tilt
 Variable speed with UPTIRN LED illuminators: Pan 0.02°-40°/s - Tilt 0.02°-30°/s
 Horizontal continuous rotation, vertical +90°/-40°
 Housing for compact lenses
 IP66
 Autopan, Preset, Patrol
 Position accuracy: 0.02°
 Up to 250 Presets
 Operating temperature: -20°C / +60°C (-4°F / +140°F)
 Power supply available 230Vac, 24Vac or 120Vac
 Internal usable area (WxHxL): 104x84x270mm (4.1x3.3x10.6in)
OPTIONS:
 Day/Night camera 36x, 28x
 Prearrangement for mounting of two UPTIRN LED illuminators
 Germanium window for thermal cameras
 Cold pack for low temperature down to -30°C (-22°F)
 Wiper



ULISSE + 2 UPTIRN

ULISSE - CONFIGURATION OPTIONS

	VOLTAGE	DAY/NIGHT CAMERA		OPTIONS		VIDEO OUTPUT	
UPT	1 230Vac	S Without Day/Night camera	V	S Without accessories	A	O Analog	00E
	2 24Vac	P Day/Night camera 36x optical zoom lens, PAL		W With wiper			
	3 120Vac	Q Day/Night camera 28x optical zoom lens, PAL		K With brackets for UPTIRN (only 24Vac, illuminators not included)			
		N Day/Night camera 36x optical zoom lens, NTSC		J With wiper and brackets for UPTIRN (only 24Vac, illuminators not included)			
		M Day/Night camera 28x optical zoom lens, NTSC		G With germanium front window for thermal cameras applications			

PTZ CAMERAS AND PTZ UNITS

CAMERA HOUSINGS

P&T MOTORS AND TELEMETRY

ILLUMINATORS

VIDEO CONTENT ANALYSIS

VIDEO MANAGEMENT AND CONTROL

VIDEO TRANSMISSION

CAMERA BRACKETS

ULISSE NETCAM

OUTDOOR FULL IP PTZ UNIT FOR NETWORK CAMERAS



For Network cameras compatible with ONVIF protocol, Profile S, or equipped with RS485 serial port

Direct access to camera web pages via VT Tunneling

Variable speed: 0.02°-100°/s Pan; 0.02°-40°/s Tilt

Variable speed with UPTIRN LED illuminators: Pan 0.02°-40°/s - Tilt 0.02°-30°/s

Horizontal continuous rotation, vertical +90°/-40°

Housing for compact lenses

IP66

Autopan, Preset, Patrol

Position accuracy: 0.02°

Up to 250 Presets

Operating temperature: -20°C / +60°C (-4°F / +140°F)

Power supply available 230Vac, 24Vac or 120Vac

Internal usable area (WxHxL): 104x84x270mm (4.1x3.3x10.6in)

OPTIONS:

Germanium window for thermal cameras

Rearrangement for mounting of two UPTIRN LED illuminators

Cold pack for low temperature down to -30°C (-22°F)

Wiper



ULISSE NETCAM + 2 UPTIRN

ULISSE NETCAM - CONFIGURATION OPTIONS

	VOLTAGE				OPTIONS		VIDEO OUTPUT		
UPT	1	230Vac	S	Without camera	V	S	Without accessories	A N For Network cameras compatible with ONVIF protocol, Profile S, or with built-in telemetry output	00E
	2	24Vac				W	With wiper		
	3	120Vac				K	With brackets for UPTIRN (only 24Vac, illuminators not included)		
						J	With wiper and brackets for UPTIRN (only 24Vac, illuminators not included)		
						G	With germanium front window for thermal cameras applications		

ULISSE PLUS

OUTDOOR PTZ UNIT FOR CAMERAS WITH MEDIUM SIZE LENSES



Variable speed: 0.02°-100°/s Pan; 0.02°-50°/s Tilt
 Variable speed with UPTIRN LED illuminators: Pan 0.02°-40°/s - Tilt 0.02°-30°/s
 Horizontal continuous rotation, vertical +90°/-40°
 Weatherproof housing for medium/large-size lenses
 IP66
 Optical sensors for absolute positioning feedback
 Position accuracy: 0.02°
 Up to 250 Presets
 Integrated wiper
 Operating temperature: -20°C / +60°C (-4°F / +140°F)
 Power supply available 230Vac, 24Vac or 120Vac
 Internal usable area (WxHxL): 115x90x325mm (4.5x3.5x12.8in)
OPTIONS:
 Prerangement for mounting of two UPTIRN LED illuminators
 Cold pack for low temperature down to -30°C (-22°F)



ULISSE PLUS + 2 UPTIRN

ULISSE PLUS - CONFIGURATION OPTIONS

	VOLTAGE			OPTIONS		VIDEO OUTPUT		
UPT	1	230Vac	SM	W With wiper	A	O	Analog	00E
	2	24Vac		J With wiper and brackets for UPTIRN (only 24Vac, illuminators not included)				
	3	120Vac						

PTZ CAMERAS AND PTZ UNITS

CAMERA HOUSINGS

P&T MOTORS AND TELEMETRY

ILLUMINATORS

VIDEO CONTENT ANALYSIS

VIDEO MANAGEMENT AND CONTROL

VIDEO TRANSMISSION

CAMERA BRACKETS

ULISSE PLUS NETCAM

OUTDOOR FULL IP PTZ UNIT FOR NETWORK CAMERAS WITH MEDIUM SIZE LENSES



For Network cameras compatible with ONVIF protocol, Profile S, or equipped with RS485 serial port

Direct access to camera web pages via VT Tunneling

Variable speed: 0.02°-100°/s Pan; 0.02°-50°/s Tilt

Variable speed with UPTIRN LED illuminators: Pan 0.02°-40°/s - Tilt 0.02°-30°/s

Horizontal continuous rotation, vertical +90°/-40°

Weatherproof housing for medium/large-size lenses

IP66

Optical sensors for absolute positioning feedback

Position accuracy: 0.02°

Up to 250 Presets

Integrated wiper

Operating temperature: -20°C / +60°C (-4°F / +140°F)

Power supply available 230Vac, 24Vac or 120Vac

Internal usable area (WxHxL): 115x90x325mm (4.5x3.5x12.8in)

OPTIONS:

Prearrangement for mounting of two UPTIRN LED illuminators

Cold pack for low temperature down to -30°C (-22°F)



ULISSE PLUS NETCAM + 2 UPTIRN

ULISSE PLUS NETCAM - CONFIGURATION OPTIONS

	VOLTAGE			OPTIONS			VIDEO OUTPUT		
UPT	1	230Vac	SM	W	With wiper	A	N	For Network cameras compatible with ONVIF protocol, Profile S, or with built-in telemetry output	00E
	2	24Vac		J	With wiper and brackets for UPTIRN (only 24Vac, illuminators not included)				
	3	120Vac							

ULISSE MAXI

PTZ UNIT FOR LARGE-SIZE ZOOM LENSES



Variable speed: 0.02°-20°/s Pan and Tilt
 Horizontal continuous rotation, vertical +45°/-20°
 Weatherproof housing for large-size lenses
 IP66
 Optical sensors for absolute positioning feedback
 Camera and lens maximum allowed weight is 7.6kg
 Integrated wiper
 Position accuracy: 0.02°
 Up to 250 Presets
 Operating temperature: -10°C / +60°C (14°F / 140°F)
 Power supply available 230Vac, 24Vac or 120Vac
 Internal usable area (WxHxL): 152x160x432mm (6x6.3x17in)

OPTIONS:

Germanium window for thermal cameras
 Prearrangement for mounting of two UPTIRN LED illuminators



ULISSE MAXI + UPTIRN

ULISSE MAXI - CONFIGURATION OPTIONS

	VOLTAGE			OPTIONS			VIDEO OUTPUT	
UPT	1	230Vac	SL	W	230Vac and 120Vac, with wiper	A	O	Analog
	2	24Vac		J	24Vac, with wiper and prearrangement for mounting of two UPTIRN (illuminators not included)			
	3	120Vac		G	With germanium front window for thermal cameras applications			

PTZ CAMERAS AND PTZ UNITS

CAMERA HOUSINGS

P&T MOTORS AND TELEMETRY

ILLUMINATORS

VIDEO CONTENT ANALYSIS

VIDEO MANAGEMENT AND CONTROL

VIDEO TRANSMISSION

CAMERA BRACKETS

ULISSE MAXI NETCAM

FULL IP PTZ UNIT FOR NETWORK CAMERAS FOR DYNAMIC MONITORING OF LARGE OUTDOOR AREAS



For Network cameras compatible with ONVIF protocol, Profile S, or equipped with RS485 serial port

Direct access to camera web pages via VT Tunneling

Variable speed: 0.02°-20°/s Pan and Tilt

Horizontal continuous rotation, vertical +45°/-20°

Weatherproof housing for large-size lenses

IP66

Optical sensors for absolute positioning feedback

Camera and lens maximum allowed weight is 7.6kg

Integrated wiper

Position accuracy: 0.02°

Operating temperature: -10°C / +60°C (14°F / 140°F)

Up to 250 Presets

Power supply available 230Vac, 24Vac or 120Vac

OPTIONS:

Germanium window for thermal cameras

Prearrangement for mounting of two UPTIRN LED illuminators



ULISSE MAXI NETCAM + UPTIRN

ULISSE MAXI NETCAM - CONFIGURATION OPTIONS

	VOLTAGE			OPTIONS			VIDEO OUTPUT		
UPT	1	230Vac	SL	W	230Vac and 120Vac, with wiper	A	N	For Network cameras compatible with ONVIF protocol, Profile S, or with built-in telemetry output	00E
	2	24Vac		J	24Vac, with wiper and prearrangement for mounting of two UPTIRN (illuminators not included)				
	3	120Vac		G	With germanium front window for thermal cameras applications				

Not all combinations are possible.

ACCESSORIES FOR ULISSE RANGE

WASPT WASHER PUMP AND 5 OR 23 LITER TANK

Versions with delivery up to 5m (16ft), 11m (36ft), 30m (98ft)

Pump available in 230Vac, 24Vac and 120Vac

In the 11m (36ft) and 30m (98ft) delivery versions the lack of liquid in the tank is signalled following the automatic stop of the pump



UPTIRN LED ILLUMINATOR

Vandalproof protection (IK10)

The illuminator is supplied in 24Vac/12-24Vdc

Beam pattern: 10°, 30°, 60°

Wavelengths: 850nm, 940nm e white light

Adjustable light intensity

Adjustable built-in photocell

IP66/IP67



UPTIRPS100N EXTERNAL POWER SUPPLY FOR ULISSE WITH UPTIRN LED ILLUMINATORS

Power supply IN 100Vac, 50/60Hz

Control to synchronize illuminators with camera Day/Night switching

Twilight sensor included

IP66



UPTIRPS230N EXTERNAL POWER SUPPLY FOR ULISSE WITH UPTIRN LED ILLUMINATORS

Power supply IN 230Vac, 50/60Hz

Control to synchronize illuminators with camera Day/Night switching

Twilight sensor included

IP66



UPTJBUL WEATHERPROOF JUNCTION BOX

For the power supply connection

External mounting from the ULISSE unit



UPTIRPS120UL EXTERNAL POWER SUPPLY FOR ULISSE WITH UPTIRN LED ILLUMINATORS

Power supply 120Vac, 50/60Hz

Control to synchronize illuminators with camera Day/Night switching

Twilight sensor included

UL listed

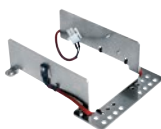
IP66



UPTHT REINFORCED HEATER FOR LOW TEMPERATURE APPLICATIONS

UPTHT1 for ULISSE and ULISSE PLUS versions with motorized lens down to -30°C (-22°F). Lenses with operating temperatures down to -20°C (-4°F)

UPTHT2 for ULISSE versions with block camera. Operating temperature down to -30°C (-22°F)



PTZ CAMERAS AND PTZ UNITS

CAMERA HOUSINGS

P&T MOTORS AND TELEMETRY

ILLUMINATORS

VIDEO CONTENT ANALYSIS

VIDEO MANAGEMENT AND CONTROL

VIDEO TRANSMISSION

CAMERA BRACKETS

BRACKETS FOR ULISSE RANGE

UPTWBA WALL MOUNT

Made of die-cast aluminum
 Epoxypolyester powder painting, RAL9002 colour
 Wall bracket with internal cable channel



UPTWBTAB PARAPET BRACKET

Made of die-cast aluminum
 Epoxypolyester powder painting, RAL9002 colour
 Internal cable management



UCCMA CEILING BRACKET FOR UPSIDE DOWN MOUNTING AND WORKING OF ULISSE COMPACT

Made of galvanized and painted steel
 Safety cord in AISI316L stainless steel
 Internal cable management



PTCC1 POLE MOUNT ADAPTOR

Made of aluminium
 For pole diameters: 80÷150mm (3÷5.9in)
 Load rating: 50kg (110lb)



WCWGC CORNER MOUNT ADAPTER

Made of steel
 Load rating: 50kg (110lb)



MAXIMUS MPX

EX-PROOF PTZ DAY/NIGHT CAMERA FOR HIGHLY CORROSIVE ENVIRONMENTS



Ex d certified for Zone 1, 2, Group IIC for Gas and Ex tb for Zone 21, 22 Group IIIC Powders

T6 a 60°C (140°F)

Certificates: ATEX, IECEX, GOST-R, CNEX, INMETRO, UL/cUL

Electropolished AISI 316L stainless steel explosion proof PTZ camera unit

¾" NPT threaded hole for use of cable glands or conduit

Variable speed: 0.1°-100°/s Pan and Tilt

Extremely easy electrical connections directly into the unit, thanks to the explosion-proof inspection box

Day/Night camera:

- True Progressive Scan
- High resolution: up to 550 TVLines
- Advanced image stabilizer (Stable Zoom Mode)
- Day/Night (Auto ICR: automatic removal of IR filter)

Up to 2 simultaneous video streams

Position accuracy: 0.02°

Integrated wiper

OPTIONS:

IP based control, H.264/AVC and JPEG, 25fps, Full D1 (compatible with ONVIF protocol, Profile S)

IP based control, MPEG4/MJPEG, 25fps, Full D1 (compatible with Milestone XProtect Suite and ONVIF protocol)

Prewired certified versions with unarmored cable/barrier cable gland (except for UL versions)



MAXIMUS MPX - CONFIGURATION OPTIONS

	VOLTAGE	DAY/NIGHT CAMERA			VIDEO OUTPUT	
MPX	1 230Vac	P Day/Night camera 36x optical zoom lens, PAL	V With alarm board	W With wiper	0	O Analog control 00A
	2 24Vac	N Day/Night camera 36x optical zoom lens, NTSC				X IP MPEG4 control
	3 120Vac					Z IP H.264/AVC, Protocol ONVIF Profile S

MAXIMUS MPX CERTIFICATIONS AND MARKINGS

CERTIFICATION	MARKINGS
ATEX	Ex II 2 G Ex d IIC T6 Ta -40°C to +60°C Gb / Ex II 2 D Ex tb IIIC T85°C -40°C to +60°C Db / IP66
IECEX	Ex d IIC T6 Ta -40°C to +60°C Gb / Ex tb IIIC T85°C Ta -40°C to +60°C Db / IP66
GOST-R	1 Ex d IIC T6 Gb X / Ex tb IIIC T85°C Db X / IP66
CNEX	Ex d IIC T6 Gb Tamb-40-60°C / DIP A21 TA T6 Tamb-40-60°C
INMETRO	Ex d IIC T6 Gb Ta -40°C a/to +60°C / Ex tb IIIC T85°C Db Ta -40°C a/to +60°C / IP66
UL listed for USA (only 24Vac versions)	Class I, Zone 1, AEx d IIC T6 / Zone 21, AEx tb IIIC T85°C
UL listed for Canada (only for 24Vac versions)	Class I, Zone 1, Ex d IIC T6 Gb / Class II, Groups E, F and G

All updates on Certifications and Markings in www.videotec.com.

MAXIMUS MPXT

EX-PROOF DUAL VISION PTZ CAMERA, DAY/NIGHT AND THERMAL, FOR HIGHLY CORROSIVE ENVIRONMENTS



Ex d certified for Zone 1, 2, Group IIC for Gas and Ex tb for Zone 21, 22 Group IIIC Powders
 T6 A 60°C (140°F)
 Certificates: ATEX, IECEX, GOST-R, CNEX, INMETRO, UL, UL/cUL
 Electropolished AISI 316L stainless steel explosion proof PTZ camera unit
 ¾" NPT threaded hole for use of cable glands or conduit
 Variable speed: 0.1°-100°/s Pan and Tilt
 Extremely easy electrical connections directly into the unit, thanks to the explosion-proof inspection box
 Dual independent video output
 Thermal cameras:

- Sensor: Uncooled microbolometer (VOx)
- Lenses: 35mm, 25mm or 19mm
- Resolution 320x256 or 640x512

 Day/Night camera:

- True Progressive Scan
- High resolution: up to 550 TVLines
- Advanced image stabilizer (Stable Zoom Mode)
- Day/Night (Auto ICR: automatic removal of IR filter)

 Up to 2 simultaneous video streams
 Position accuracy: 0.02°
OPTIONS:
 IP based control, H.264/AVC and JPEG, 25fps, Full D1 (compatible with ONVIF protocol, Profile S)
 IP based control, MPEG4/MJPEG, 25fps, Full D1 (compatible with Milestone XProtect Suite and ONVIF protocol)
 Prewired certified versions with unarmored cable/barrier cable gland (except for UL versions)



MAXIMUS MPXT - CONFIGURATION OPTIONS

	VOLTAGE	DAY/NIGHT CAMERA	THERMAL CAMERA	VIDEO OUTPUT	THERMAL CAMERA FRAME RATE
MPXT	1 230Vac	P Day/Night camera 36x optical zoom lens, PAL	A Thermal camera 35mm, 320x256	0 0 Analog control	00A - 7.5-8.3Hz
	2 24Vac	N Day/Night camera 36x optical zoom lens, NTSC	B Thermal camera 25mm, 320x256	X IP MPEG4 control	H 25-30Hz
	3 120Vac		D Thermal camera 35mm, 640x512	Z IP H.264/AVC, Protocol ONVIF Profile S	
			E Thermal camera 25mm, 640x512		
			V Thermal camera 19mm, 320x256		

MAXIMUS MPXT CERTIFICATIONS AND MARKINGS

CERTIFICATION	MARKINGS
ATEX	Ex II 2 G Ex d IIC T6 Ta -40°C to +60°C Gb / Ex II 2 D Ex tb IIIC T85°C -40°C to +60°C Db / IP66
IECEX	Ex d IIC T6 Ta -40°C to +60°C Gb / Ex tb IIIC T85°C Ta -40°C to +60°C Db / IP66
GOST-R	1 Ex d IIC T6 Gb X / Ex tb IIIC T85°C Db X / IP66
CNEX	Ex d IIC T6 Gb Tamb-40-60°C / DIP A21 TA T6 Tamb-40-60°C
INMETRO	Ex d IIC T6 Gb Ta -40°C a/to +60°C / Ex tb IIIC T85°C Db Ta -40°C a/to +60°C / IP66
UL listed for USA (only 24Vac versions)	Class I, Zone 1, AEx d IIC T6 / Zone 21, AEx tb IIIC T85°C
UL listed for Canada (only for 24Vac versions)	Class I, Zone 1, Ex d IIC T6 Gb / Class II, Groups E, F and G

All updates on Certifications and Markings in www.videotec.com.

WASEX

STAINLESS STEEL WASHER PUMP WITH EXPLOSION-PROOF SOLENOID VALVE FOR MAXIMUS SERIES

Enclosure made of stainless steel AISI 316L

Delivery head up to 20m

Different loading modes

Power supply in 24Vac/dc, 20W max.

Certifications solenoid valve:

ATEX

- Ex II GD Ex d IIC T4 Gb
Ex tb IIIC T130°C Db

INMETRO

- Ex d IIC T4 Gb IP66

GOST-R

- 1 Exd IIC T4
• Tamb -40/+60°C

All updates on Certifications and Markings in www.videotec.com



BRACKETS AND ADAPTERS FOR MAXIMUS MPX AND MPXT

MPXWBA WALL MOUNT

Made of AISI 316L electropolished stainless steel

Load rating: 40kg (88lb)

Can be coupled with modular MPXCW and MPXCOL components



MPXWBTA PARAPET OR CEILING MOUNTING BRACKET

Made of AISI 316L electropolished stainless steel

Load rating: 40kg (88lb)

Dimensions: Ø 238mm (9.4in)



MPXCW CORNER MOUNT ADAPTER

Made of AISI 316L electropolished stainless steel



MPXCOL POLE MOUNT ADAPTER

Made of AISI 316L electropolished stainless steel



EXPT

EXPLOSION-PROOF INTEGRATED PAN&TILTS WITH CAMERA HOUSING

Solid anticorrosional aluminium construction
 Horizontal range 360° with speed 6°/s, vertical range -90° / +90° with speed 2.4°/s
 Housing built with the same characteristics as the EXHC
 Version with device for the protection of the glass, EXPTD (Integrated housing with the same specifications as the EXHD)
 IP66
 Version available with reinforced housing heater 24Vac, P&T heater 24Vac and RAL7001 special painting for temperature applications down to -40°C (-40°F) (mod. EXPTC033R, EXPTD035R)
 A single pre-wired multi-core cable, 7,5m long, is included with the unit and comes out from the base of the P&T through a cable gland
 Supplied with housing heater and preset. Sunshield and autopan available as options
 Internal usable area (WxHxL): 100x100x280mm (3.9x3.9x11in)



EXPTC + EXPTS

EXPTD + EXPTS



EXPT CERTIFICATIONS AND MARKINGS

CERTIFICATION	MARKINGS
ATEX	Ex II 2G Ex d IIC T6 Gb / Ex II 2D Ex t IIIC T85°C Db IP66
IECEX	Ex d IIC T6 Gb / Ex t IIIC T85°C Db IP66
GOST-R	1 Ex d IIC T6 Gb / Ex tb IIIC T85°C Db IP66
CNEX	Ex d IIC T6 Gb / DIP A21 TA T6 / Tamb: -20+50°C / Tamb: -40+50°C (when equipped with reinforced heater)

All updates on Certifications and Markings in www.videotec.com.

EXPTC010G

EXPLOSION-PROOF P&T WITH HOUSING FOR THERMAL IMAGING CAMERAS

Solid anticorrosional aluminium construction
 Germanium window
 IP66
 Housing supplied with heater. Sunshield as option



EXPTC010G CERTIFICATIONS AND MARKINGS

CERTIFICATION	MARKINGS
ATEX	Ex II 2G Ex d IIC T6 Gb / Ex II 2D Ex t IIIC T85°C Db IP66
GOST-R	1 Ex d IIC T6 Gb / Ex tb IIIC T85°C Db IP66

All updates on Certifications and Markings in www.videotec.com.

EXPTWB BRACKET FOR EXPT EX-PROOF PTZ UNIT

Solid anticorrosional aluminium construction
 Epoxy polyester powder painting, RAL7032
 Available version with RAL7001 special painting for low temperature application (EXPTWB00R)
 Load rating: 100kg
 Length: 676mm (26.6in)



NXPTZ

DAY/NIGHT PTZ CAMERA FOR ONSHORE / OFFSHORE, MARINE AND INDUSTRIAL



- Electropolished AISI 316L stainless steel
- Pre-wired multipolar cable
- Variable speed: 0.1°-100°/s Pan and Tilt
- Position accuracy: 0.02°
- Up to 2 simultaneous video streams
- Day/Night camera:
 - True Progressive Scan
 - High resolution: up to 550 TVLines
 - Advanced image stabilizer (Stable Zoom Mode)
 - Day/Night (Auto ICR: automatic removal of IR filter)
- Integrated wiper
- Operating temperature: -40°C / +60°C (-40°F / +140°F)
- OPTIONS:**
- IP based control, H.264/AVC and JPEG, 25fps, Full D1 (compatible with ONVIF protocol, Profile S)



NXPTZ - CONFIGURATION OPTIONS

	VOLTAGE	DAY/NIGHT CAMERA				VIDEO OUTPUT	
NXPTZ	1 230Vac	P Day/Night camera 36x optical zoom lens, PAL	V With alarm board	W With wiper	0	0 Analog	00A
	2 24Vac	N Day/Night camera 36x optical zoom lens, NTSC			Z	IP H.264/AVC, Protocol ONVIF Profile S	
	3 120Vac						

PTZ CAMERAS AND PTZ UNITS

CAMERA HOUSINGS

P&T MOTORS AND TELEMETRY

ILLUMINATORS

VIDEO CONTENT ANALYSIS

VIDEO MANAGEMENT AND CONTROL

VIDEO TRANSMISSION

CAMERA BRACKETS

NXPTZT

PTZ CAMERA DUAL VISION, DAY/NIGHT AND THERMAL, FOR ONSHORE / OFFSHORE, MARINE AND INDUSTRIAL



Electropolished AISI 316L stainless steel

Pre-wired multipolar cable

IP66

Variable speed: 0.1°-100°/s Pan and Tilt

Position accuracy: 0.02°

Dual independent video output

Up to 2 simultaneous video streams

Thermal cameras:

- Sensor: Uncooled microbolometer (VOx)
- Lenses: 50mm, 35mm or 25mm
- Resolution 320x256 or 640x512

Day/Night camera:

- True Progressive Scan
- High resolution: up to 550 TVLines
- Advanced image stabilizer (Stable Zoom Mode)
- Day/Night (Auto ICR: automatic removal of IR filter)

Integrated wiper

Operating temperature: -40°C / +60°C (-40°F / +140°F)

OPTIONS:

IP based control, H.264/AVC and JPEG, 25fps, Full D1 (compatible with ONVIF protocol, Profile S)



NXPTZT - CONFIGURATION OPTIONS

	VOLTAGE	DAY/NIGHT CAMERA	THERMAL CAMERA			VIDEO OUTPUT	THERMAL CAMERA FRAME RATE
NXPTZT	1 230Vac	P Day/Night camera 36x optical zoom lens, PAL	A Thermal camera 35mm - 320x256	W With wiper	0	0 Analog	00A - 7.5-8.3Hz
	2 24Vac	N Day/Night camera 36x optical zoom lens, NTSC	B Thermal camera 25mm - 320x256			Z IP H.264/AVC, Protocol ONVIF Profile S	H 25-30Hz
	3 120Vac		D Thermal camera 35mm - 640x512				
			E Thermal camera 25mm - 640x512				
			Y Thermal camera 50mm - 320x256				
			W Thermal camera 50mm - 640x512				

ACCESSORIES FOR NXPTZ/T PTZ CAMERAS

WASPT WASHER PUMP AND 5 OR 23 LITER TANK

Versions with delivery up to 5m (16ft), 11m (36ft), 30m (98ft)

Pump available in 230Vac, 24Vac and 120Vac

In the 11m (36ft) and 30m (98ft) delivery versions the lack of liquid in the tank is signalled following the automatic stop of the pump



BRACKETS AND ADAPTERS FOR NXPTZ AND NXPTZT

NXPTZWB WALL MOUNT

Made of AISI 316L electropolished stainless steel

Load rating: 40kg (88lb)

Length: 400mm (15.7in)

Can be coupled with modular NXPTZCW and NXPTZCOL components



NXPTZTW PARAPET OR CEILING MOUNTING BRACKET

Made of AISI 316L electropolished stainless steel

Load rating: 40kg (88lb)

Dimensions: Ø 238mm (9.4in)



NXPTZCW CORNER MOUNT ADAPTER

Made of AISI 316L electropolished stainless steel

Load rating: 50kg (110lb)

Dimensions: 335x186mm (13.2x7.3in)



NXPTZCOL POLE MOUNT ADAPTER

Made of AISI 316L electropolished stainless steel

For pole diameters: 110÷150mm (4.3÷5.9in)

Load rating: 50kg (110lb)

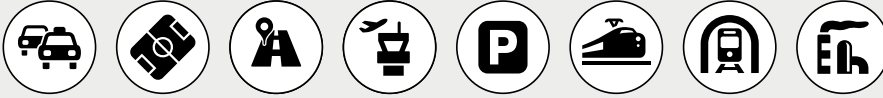
Dimensions: 198x182mm (7.8x7.2in)



CAMERA HOUSINGS

CAMERA HOUSINGS

The camera housings are made of top-quality aluminium and innovative plastic materials. The attention given during manufacturing makes them sturdy and reliable, as well as easy to install. The wide range of accessories available, such as the heater, blower and filters, camera power supply, and wiper also satisfy any requirement.



DISCREET SURVEILLANCE CAMERA HOUSINGS

Dome camera housings for discreet surveillance were designed for indoor and outdoor use. Their special design enables them to be camouflaged as a normal lighting system. These housings are easily installed and can house both the camera with a fixed lens and speed dome or camera network. These housings are especially suited for airports, supermarkets, and shopping centres.



VANDAL RESISTANT CAMERA HOUSINGS

The sturdy vandal-resistant housings guarantee maximum camera and lens protection in railway stations, the underground, public parking areas and detention centres where possible acts of vandalism can occur.



EX-PROOF CAMERAS AND HOUSINGS

The explosion-proof cameras and housings have been certified and designed to meet strict standards regarding installation in potentially explosive environments, given the presence of gas and flammable dusts. These products ensure excellent performance for monitoring critical processes and are thus the perfect video surveillance solutions for chemical, oil and gas industries. Their sturdiness and limited maintenance make these products suitable for use in extreme environmental conditions and offer a level of quality beyond any expectations.



STAINLESS STEEL CAMERAS AND HOUSINGS

The camera stainless steel housings were designed to protect the cameras against particularly aggressive environmental conditions. Given the very strict specifications, the best materials were used to design them and every mechanical detail has been meticulously analysed, thus obtaining very reliable products that withstand industrial applications and intensive marine corrosion. The range also offers a few models for thermal cameras or thermal-integrated cameras.



HOV

SIDE OPENING ALUMINIUM CAMERA HOUSING

Made of aluminium and sunshield of ABS material

IP66/IP67 (with cable glands or optional sealing rings)

Pre-arranged for internal cable management bracket

Version with a very efficient cooling system for installation with IP cameras and for high environmental temperature

Version with integrated wiper

Available accessories: heater, camera power supply, fan assisted heater, alarm tamper switch, washer pump

Internal usable area (WxHxL): 100x70x250mm (3.9x2.7x9.8in)



HOV Hi-PoE IPM

ALUMINIUM HOUSING WITH IPM TECHNOLOGY FOR IP CAMERAS

IPM technology (Intelligent Power Management)

PoE / Hi-PoE power supply for heating, demisting, illuminator, fan and PoE network camera

Compatible with IEEE 802.3af, IEEE 802.3at/PoE Plus

Indoor / Outdoor

IP66/IP67 (with cable glands or optional sealing rings)

Special cable gland for a fast Ethernet connection/disconnection without cutting the RJ45 connector

Pre-arranged for internal cable management bracket

Version with fan with double air filter

Version with anti-icing heated glass

Pre-arranged to supply a GEKO IRH illuminator

Internal usable area (WxHxL): 100x70x250mm (3.9x2.7x9.8in)



OHOVPOEIPM

KIT RETROFIT FOR IPM TECHNOLOGY ON HOV CAMERA HOUSING

IPM technology (Intelligent Power Management)

PoE / Hi-PoE power supply for heating, demisting, illuminator, fan and PoE network camera

Compatible with IEEE 802.3af, IEEE 802.3at/PoE Plus



HTV

ALUMINIUM HOUSING FOR THERMAL CAMERAS

Germanium window

IP66/IP67 (with cable glands or optional sealing rings)

Pre-arranged for internal cable management bracket

Side opening, easy camera servicing

Available accessories: heater, camera power supply, alarm tamper switch

Internal usable area (WxHxL): 100x70x250mm (3.9x2.7x9.8in)



PUNTO

SIDE OPENING TECHNOPOLYMER HOUSING

IP66/IP67 (with cable glands or optional sealing rings)
 Pre-arranged for internal cable management bracket
 Suitable for a variety of combinations of cameras and lenses
 Integrated heater
 Available accessories: camera power supply
 Internal usable area (WxHxL): 70x70x250mm (2.7x2.7x9.8in)

IP66
IP67
PROTECTION



PUNTO Hi-PoE

TECHNOPOLYMER HOUSING FOR IP CAMERA

FEATURES

PoE/Hi-PoE to power heater & network camera
 Category 5e shielded power cable
 Compatible with IEEE 802.3af, IEEE 802.3at/PoE Plus
 Special cable gland for a fast Ethernet connection/disconnection without cutting the RJ45 connector
 Indoor / Outdoor
 Side opening, easy camera servicing
 IP66/IP67
 Sunshield included
 Pre-arranged for internal cable management bracket
 Internal usable area (WxHxL): 70x70x250mm (2.7x2.7x9.8in)

IP66
IP67
PROTECTION

FULL-IP
NETWORK



VERSO COMPACT

COMPACT SIDE OPENING POLYCARBONATE CAMERA HOUSING

IP66/IP67 (with cable glands or optional sealing rings)
 Vandalproof protection (IK10)
 Pre-arranged for internal cable management bracket
 Available accessories: heater, camera power supply, fan assisted heater
 Internal usable area (WxHxL): 63x63x210mm (2.5x2.5x8.3in)

IP66
IP67
PROTECTION

IK10
VANDALPROOF



VERSO

SIDE OPENING POLYCARBONATE CAMERA HOUSING

IP66/IP67 (with cable glands or optional sealing rings)
 Vandalproof protection (IK10)
 Pre-arranged for internal cable management bracket
 Version with a very efficient cooling system for installation with IP cameras and for high environmental temperature
 Available accessories: heater, camera power supply, fan assisted heater, washer pump
 Internal usable area (WxHxL): 70x70x270mm (2.7x2.7x10.6in)

IP66
IP67
PROTECTION

IK10
VANDALPROOF



VERSO Hi-PoE IPM

POLYCARBONATE HOUSING WITH IPM TECHNOLOGY FOR IP CAMERAS

IPM technology (Intelligent Power Management)
 PoE / Hi-PoE power supply for heating, demisting, illuminator, fan and PoE network camera
 Compatible with IEEE 802.3af, IEEE 802.3at/PoE Plus
 Indoor / Outdoor
 Vandalproof protection (IK10)
 IP66/IP67 (with cable glands or optional sealing rings)
 Special cable gland for a fast Ethernet connection/disconnection without cutting the RJ45 connector
 Version with fan with double air filter
 Pre-arranged to supply a GEKO IRH illuminator
 Pre-arranged for internal cable management bracket
 Internal usable area (WxHxL): 70x70x230mm (2.7x2.7x9.0in)



OHPVPOEIPM

KIT RETROFIT WITH IPM TECHNOLOGY ON VERSO HOUSING

IPM technology (Intelligent Power Management)
 PoE / Hi-PoE power supply for heating, demisting, illuminator, fan and PoE network camera
 Compatible with IEEE 802.3af, IEEE 802.3at/PoE Plus



VERSO POLAR

CAMERA HOUSING FOR EXTREMELY LOW TEMPERATURE

Hi-performance working down to -55°C (-67°F)
 IP66/IP67 (with cable glands or optional sealing rings)
 Vandalproof protection (IK10)
 3 nickel-plated brass cable glands with standard bracket
 Available accessories: camera power supply
 Internal usable area (WxHxL): 70x70x270mm (2.7x2.7x10.6in)



HEK

ALUMINIUM AND THERMOPLASTIC CAMERA HOUSING

IP66/IP67 (with cable glands or optional sealing rings)
 Pre-arranged for internal cable management bracket
 Slide extractable body with hinged system
 Versions with fan-assisted heater
 Available accessories: heater and camera power supply
 Internal usable area (WxHxL): 82x62x190mm (3.2x2.4x7.5in) (HEK26); 82x62x235mm (3.2x2.4x9.3in) (HEK30)



HEB**ALUMINIUM WEATHERPROOF CAMERA HOUSING**

IP66/IP67 (with cable glands or optional sealing rings)

Slide extractable body with hinged system

Pre-arranged for internal cable management bracket

Available accessories: heater, camera power supply, blower and air filter

Internal usable area (WxHxL): 90x85x190mm (3.5x3.3x7.5in) (HEB26); 90x85x250mm (3.5x3.3x9.5in) (HEB32)

**HEG****LARGE-SIZED CAMERA HOUSING**

For large lenses

IP66/IP67

Slide extractable body

Version available with a very efficient cooling system for installation with IP cameras and for high environmental temperature

Versions with reinforced double heater (down to -40°C(-40°F) or triple (down to -50°C (-58°F))

Available accessories: heater, camera power supply, wiper, washer pump

Internal usable area (WxHxL): 134x88x273mm (5.1x3.5x10.7in) (HEG37); 134x88x363mm (5.1x3.5x14.3in) (HEG47)

**HTG****LARGE HOUSING FOR THERMAL CAMERAS**

Germanium window

IP66/IP67

Integrated heater

Available accessories: camera power supply

Internal usable area (WxHxL): 134x88x273mm (5.1x3.5x10.7in)

**HGV****EXTRA LARGE-SIZED CAMERA HOUSING**

Extra-large dimensions to fit the largest motorized zoom lenses

Base constructed from aluminium and top part of the body in robust ABS material

IP66/IP67

Removable top body with safety cord

Equipped as standard with camera power supply, reinforced triple heater with two continuous duty fans, wiper

Washer pump as option

Internal usable area (WxHxL):

- (A) 200x169x519mm (7.9x6.7x20.4in)
- (B) 156x139x519mm (6.1x5.5x20.4in)



ACCESSORIES FOR CAMERA HOUSINGS

WAS WASHER PUMP AND 5 OR 23 LITER TANK

Versions with delivery up to 5m (16ft), 11m (36ft), 30m (98ft)

Pump available in 230Vac, 24Vac and 120Vac (WASPT series, prearranged for DTWRX board for the remote control)

In the 11m (36ft) and 30m (98ft) delivery versions the lack of liquid in the tank is signalled following the automatic stop of the pump (except for 11m version of WAS series)



CAMERA POWER SUPPLY

It can be installed inside the housing

Available in different versions, 120/230Vac input and 24Vac/12Vdc output.



HEATER

Thermostatically controlled heating element PTC 20W or 40W (Ton <= 15°C; Toff >= 22°C)

Available in 12Vdc/24Vac voltage or 120/230Vac voltage



DTWRX TELEMETRY DATA RECEIVER FOR WIPER AND WASHER REMOTE CONTROL

Remote control of wiper and washer pump of WASPT series in stand-alone housings

RS485 communication

Remote controllable up to 1200m (3937ft) from the control keyboard



BLOWER WITH AIR FILTER

With thermostatically controlled cooling blower Ton >= 35°C (95°F); Toff <= 20°C (68°F) and filter

Available in 12Vdc, 24Vac and 230Vac versions



OWBIP- SEALING RINGS

For cable management bracket

For WBOVA2 and WCM4A2 brackets

IP66/IP67



OHEGBB- WEATHERPROOF JUNCTION BOX

IP55

For housing of wiring harnesses or auxiliary boards



TAMPER SWITCH ON BOARD FOR HOUSING

With tamper proof screws and key



VIP6A- WIPER FOR HEG

It can be directly installed on the housing body Including the support for the washing pump injector

Available in 24Vac and 230Vac, 7W max For HEG housings series



ACCESSORIES COMPATIBILITY

	HOV	HTV	PUNTO	VERSO COMPACT	VERSO	VERSO POLAR	HEK	HEB	HEG	HTG	HGV
Heater	✓	✓	-	✓	✓	-	✓	✓	✓	-	-
Blower with air filter	-	-	-	-	✓	-	-	✓	-	-	-
Integrated power supply	✓	✓	✓	✓	✓	✓	✓	✓	✓	✓	-
Weatherproof box	✓	✓	✓	✓	✓	✓	✓	✓	✓	✓	✓
Camera power supply in weatherproof box	-	-	-	-	✓	✓	-	-	✓	✓	-
Wiper	✓ ¹	-	-	-	-	-	-	-	✓	-	✓ ¹
Pump with tank	✓	-	-	-	-	-	-	-	✓	-	✓
Wiper/Washer control	✓	-	-	-	-	-	-	-	✓	-	✓
Heater fan-assistant blower, continuous duty	✓	-	-	✓	✓	-	-	-	-	-	-
Alarm tamper switch	✓	✓	-	-	✓	-	-	-	-	-	-

¹ Built-in.

BRACKETS AND ADAPTERS FOR CAMERA HOUSINGS

WBJA WALL MOUNT

Made of aluminium
Fully adjustable swivel head
Load rating: 25kg (55lb)



WBMA WALL MOUNT

Made of aluminium
Fully adjustable swivel head
Load rating: 25kg (55lb)



WBOVA2 WALL MOUNT

Made of aluminium
Fully adjustable swivel head
Internal cable management
Load rating: 25kg (55lb)
The sealing rings OWBIP2 or OWBIP3 ensure an IP66 protection to the housing



WBOV3A2 WALL BRACKET WITH SUPPORT PLATE AND WEATHERPROOF JUNCTION BOX

Made of aluminium
Internal cable management directly to the box
Load rating: 25kg (55lb)
The sealing rings OWBIP2 or OWBIP3 ensure an IP66 protection to the housing



WBLA WALL BRACKET FOR HGV

Solid anticorrosional aluminium construction
Load rating: 70kg (154lb)



WCM3A CEILING MOUNT

Made of aluminium
Fully adjustable swivel head
Load rating: 15kg (33.5lb)



WCM4A2 CEILING MOUNT

Made of aluminium tube
Internal cable management
Load rating: 15kg (33.5lb)



WCM5A CEILING MOUNT

Made of aluminium
Load rating: 15kg (33.5lb)
500mm (19in) linear extension available with WCPMA



WCPMA LINEAR EXTENSION FOR WCM4A2 AND WCM5A

It allows a 500mm (19in) extension



WFWCA PARAPET BRACKET

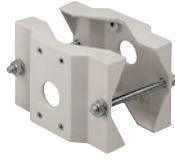
Made of aluminium
Fully adjustable swivel head
Load rating: 15kg (33.5lb)
Available extension through WFWBTA



BRACKETS AND ADAPTERS FOR CAMERA HOUSINGS

WSFPA POLE MOUNT ADAPTOR

Made of aluminium
 It allows the internal cable management
 Load rating: 30kg (66lb)
 For pole diameters: 65÷110mm (2.6÷4.3in)



DBHWGC POLE MOUNT ADAPTOR

Made of steel
 For pole diameters: 210÷225mm (8.3÷8.6in)
 To be combined with the reinforcing support plate WCPA
 Load rating: 25kg (55lb) (static load)



WCWA CORNER MOUNT ADAPTER

Made of steel
 Load rating: 30kg (66lb)



WCPA REINFORCING SUPPORT PLATE FOR POOR CONSISTENCY WALLS

Made of aluminium
 Available with a supporting box with internal cable channel
 Load rating: 50kg (110lb)



COMPATIBILITY HOUSINGS/BRACKETS

BRACKET	WALL					CEILING			COLUMN
	WBLA	WBJA	WBMA	WBOVA2	WBOV3A2	WCM3A	WCM4A2	WCM5A	WFWCA
LENGTH	457MM (18IN)	285MM (11IN)	226MM (9IN)	201MM (8IN)	238MM (9.4IN)	300MM (11.8IN)	412MM (16.2IN)	412MM (16.2IN)	185MM (7.3IN)
HOV	-	✓	-	✓	✓	✓	✓	✓	✓
HTV	-	✓	-	✓	✓	✓	✓	✓	✓
PUNTO	-	✓	-	✓	✓	✓	✓	✓	✓
VERSO COMPACT	-	✓	✓	✓	✓	✓	✓	✓	✓
VERSO	-	✓	-	✓	✓	✓	✓	✓	✓
HEK	-	-	✓	✓	✓	✓	✓	✓	✓
HEB	-	✓	✓	✓	✓	✓	✓	✓	✓
HEG	-	✓	-	-	-	-	-	✓	✓
HTG	-	✓	-	-	-	-	-	✓	✓
HGV	✓	-	-	-	-	-	-	-	-

COMPATIBILITY BRACKETS/ADAPTERS

	HOUSING BRACKETS		
	WBJA	WBMA	WBOVA2
POLE MOUNT ADAPTOR			
WSFPA	✓	✓	✓
DBHWGC ¹	✓	✓	✓
CORNER MOUNT ADAPTOR			
WCWA	✓	✓	✓
SUPPORT PLATE ADAPTOR			
WCPA	✓	✓	✓

¹ To be combined with the reinforcing support plate WCPA

MEDUSA

UNIVERSAL DOME HOUSING FOR DISCREET SURVEILLANCE

- Patented top-opening system
- Made of aluminium with bubble in acrylic
- Indoor / Outdoor
- IP66
- Wall, ceiling or parapet application with cable management brackets
- Universal internal adapter suitable for the most popular speed domes and network PTZ cameras on the market, like: AXIS, PANASONIC, SONY, JVC, CANON, ACTi, GRANDEYE, COMPRO TECHNOLOGIES, etc
- Transparent or smoked bubble
- Special adapter for several speed domes



BRACKETS AND ADAPTERS FOR MEDUSA

DBH06 WALL BRACKET FOR MEDUSA DOME

- Made of aluminium
- Internal cable management



DBH07 CEILING/PARAPET BRACKET FOR MEDUSA DOME

- Made of aluminium
- Internal cable management



PTCC1 POLE MOUNT ADAPTOR

- Made of aluminium
- For pole diameters: 80÷150mm (3÷5.9in)
- Load rating: 50kg (110lb)



WCWGC CORNER MOUNT ADAPTER

- Made of steel
- Load rating: 50kg (110lb)



DBHWGC POLE MOUNT ADAPTOR

- Made of steel
- For pole diameters: 210÷225mm (8.3÷8.6in)
- To be combined with the reinforcing support plate WCPA
- Load rating: 25kg (55lb) (static load)



DSBH120

CEILING HOUSING FOR DISCREET SURVEILLANCE

- Directly fixed to the ceiling or false ceilings
- Diameter 120mm (4.7in)
- Available in transparent or smoked glass
- Aluminium construction with bubble in acrylic
- Adjustable camera mounting bracket



AVBPH

ARMOURED LARGE CAMERA HOUSING

Made of extremely thick aluminium, with front and rear bottom constructed from 30mm (1.1in) aluminium, RAL9002

Impact resistance IK10 according to EN 62262

Indoor / Outdoor

IP54

18mm (0.7in) bullet-proof glass on vandal resistant metallic structure

3mm (0.1in) steel armour side plating

Standard accessories sunshield and heater; optional camera power supply

IP54
PROTECTION

IK10
VANDALPROOF



AVTPSC

COMPACT VANDAL RESISTANT CEILING HOUSING FOR INDOOR INSTALLATION

Vandal resistant polycarbonate window, 6mm (0.6in)

Impact resistance IK08 according to EN 62262

Compass opening by means of an universal lock

Made of steel, 1,5mm (0.6in) thick

Without external screws

Possibility of external connections by means of 2 cable glands or directly from the ceiling

Accessories available: thermostated heater and camera power supply



AVTPSK

VANDAL RESISTANT CEILING CAMERA HOUSING FOR INDOOR INSTALLATION

Made of steel, 2,5mm (0.1in) thick

Vandal resistant window, 4mm (0.15in), in anti-scratch polycarbonate

Impact resistance IK10 according to EN 62262

Compass opening by means of a lock with individual or with universal key

Without external screws

Possibility of external connections by means of 3 glands or directly from the ceiling

Accessories available: thermostated heater, camera power supply and alarm tamper switch

IK10
VANDALPROOF



ACCESSORIES FOR VANDAL RESISTANT CAMERA HOUSINGS

CAMERA POWER SUPPLY

It can be installed inside the housing

Available in different versions, 120/230Vac input and 24Vac/12Vdc output.



HEATER

It can be installed inside the housing

Available in different versions, 120/230Vac input and 24Vac/12Vdc output.



OAVTPSTA TAMPER SWITCH ON BOARD

With tamper proof screws and key

For AVTPSK housing



MAXIMUS MHX

STAINLESS STEEL EX-PROOF CAMERA

Made of AISI 316L electropolished stainless steel
 Integrated Day/Night camera 10x, 1/3"
 2 3/4" NPT threaded holes for use of cable glands or conduit
 Integrated telemetry receiver for version with wiper
 Sunshield and heater included
 IP66/IP67
 Internal usable area (WxHxL): 80x82x245mm (3.1x3.2x9.6in)

OPTIONS:

Housing without camera
 Wiper



MHX + MHXWBS



MAXIMUS MHX - CONFIGURATION OPTIONS

	VOLTAGE	CERTIFICATION	OPTIONS		DAY/NIGHT CAMERA 10X	
MHX	1 230Vac	C IIC -40°C	S Without wiper	0 With sunshield	00 Without camera	A ATEX / IECEx / INMETRO
	2 24Vac		W With wiper		B0 Day/Night camera 10x optical zoom lens, PAL	A-U UL Listed for USA and CANADA ¹
	3 120Vac				K0 Day/Night camera 10x optical zoom lens, NTSC	

¹ MHX2...A-U, only versions in 24Vac and with pre-installed camera. Operating temperature -40°C / + 54°C (-40°F / 122°F)

MAXIMUS MHX CERTIFICATIONS AND MARKINGS

CERTIFICATION	MARKINGS	PRODUCT NR. ENDING
ATEX	EX II 2 G Ex d IIC T6 Gb Ta -40°C to +60°C / EX II 2 D Ex tb IIIC T85°C Db Ta -40°C to +60°C	...A
IECEX	Ex d IIC T6 Gb Ta -40°C to +60°C / Ex tb IIIC T85°C Db Ta -40°C to +60°C	...A
INMETRO	Ex d IIC T6 Gb -40°C à/to +60°C / Ex tb IIIC T85°C Db -40°C à/to +60°C	...A
UL listed for USA (only 24Vac)	Class I, Zone 1, AEx d IIC T6 / Zone 21, AEx tb IIIC T85°C	...A-U
UL listed for Canada (only 24Vac)	Class I, Zone 1, Ex d IIC T6 Gb / Class II, Groups E, F and G	...A-U

All updates on Certifications and Markings in www.videotec.com.

MAXIMUS MHXT

STAINLESS STEEL EX-PROOF THERMAL CAMERA



Made of AISI 316L electropolished stainless steel
 Germanium window with protection grid

Thermal cameras:

- Sensor: Uncooled microbolometer (VOx)
- Lenses: 50mm, 35mm, 25mm, 19mm, 13mm or 9mm
- Resolution 320x256 or 640x512
- Image frequency: 8.3Hz or 25Hz

2 3/4" NPT threaded holes for use of cable glands or conduit

Integrated telemetry receiver

Sunshield and heater included

IP66/IP67

Internal usable area (WxHxL): 80x82x245mm (3.1x3.2x9.6in)

OPTIONS:

Housing without camera



MAXIMUS MHXT - CONFIGURATION OPTIONS

	VOLTAGE	CERTIFICATION		THERMAL CAMERA	
MHXT	1 230Vac	C IIC -40°C	0 With sunshield	00 Without camera	A INMETRO
	2 24Vac			N0 Thermal camera 50mm, 320x256, 7.5-8.3Hz	B ATEX / IECEX
	3 120Vac			NH Thermal camera 50mm, 320x256, 25-30Hz	A-U UL Listed for USA and CANADA ¹
				A0 Thermal camera 35mm, 320x256, 7.5-8.3Hz	
				AH Thermal camera 35mm, 320x256, 25-30Hz	
				B0 Thermal camera 25mm, 320x256, 7.5-8.3Hz	
				BH Thermal camera 25mm, 320x256, 25-30Hz	
				VO Thermal camera 19mm, 320x256, 7.5-8.3Hz	
				VH Thermal camera 19mm, 320x256, 25-30Hz	
				P0 Thermal camera 50mm, 640x512, 7.5-8.3Hz	
				PH Thermal camera 50mm, 640x512, 25-30Hz	
				D0 Thermal camera 35mm, 640x512, 7.5-8.3Hz	
				DH Thermal camera 35mm, 640x512, 25-30Hz	
				E0 Thermal camera 25mm, 640x512, 7.5-8.3Hz	
				EH Thermal camera 25mm, 640x512, 25-30Hz	
				U0 Thermal camera 19mm, 640x512, 7.5-8.3Hz	
				UH Thermal camera 19mm, 640x512, 25-30Hz	

Thermal cameras 9mm and 13mm are available upon request.

¹ MHXT2...A-U, only versions in 24Vac and with pre-installed camera. Operating temperature -40°C / + 54°C (-40°F / 122°F)

MAXIMUS MHXT CERTIFICATIONS AND MARKINGS

CERTIFICATION	MARKINGS	PRODUCT NR. ENDING
ATEX	EX II 2 G Ex d IIC T6 Gb Ta -40°C to +60°C / EX II 2 D Ex tb IIIC T85°C Db Ta -40°C to +60°C	...B
IECEX	Ex d IIC T6 Gb Ta -40°C to +60°C / Ex tb IIIC T85°C Db Ta -40°C to +60°C	...B
INMETRO	Ex d IIC T6 Gb -40°C à/to +60°C / Ex tb IIIC T85°C Db -40°C à/to +60°C	...A
UL listed for USA (only 24Vac)	Class I, Zone 1, AEx d IIC T6 / Zone 21, AEx tb IIIC T85°C	...A-U
UL listed for Canada (only 24Vac)	Class I, Zone 1, Ex d IIC T6 Gb / Class II, Groups E, F and G	...A-U

All updates on Certifications and Markings in www.videotec.com.

ACCESSORIES FOR MAXIMUS EX- PROOF CAMERAS AND HOUSINGS

WASEX STAINLESS STEEL WASHER PUMP WITH EXPLOSION-PROOF SOLENOID VALVE FOR MAXIMUS SERIES

Enclosure made of stainless steel AISI 316L

Delivery head up to 20m

Different loading modes

Power supply in 24Vac/dc, 20W max.

Certifications solenoid valve:

ATEX

- Ex II GD Ex d IIC T4 Gb
Ex tb IIIC T130°C Db

INMETRO

- Ex d IIC T4 Gb IP66

GOST-R

- 1 Exd IIC T4
• Tamb -40/+60°C



BRACKETS AND ADAPTERS FOR MAXIMUS MHX AND MAXIMUS MHXT

MHXWBS WALL MOUNT

Made of AISI 316L electropolished stainless steel

Load rating: 40kg (88lb)

Length: 425mm (16.7in)

Can be coupled with modular MPXCW and MPXCOL components



MHXWFWCA BALL JOINT FOR HOUSING

Made of AISI 316L electropolished stainless steel

Compatible with NXFWBT bracket

Load rating: 40kg (88lb)

Dimensions: Ø 101.6mm



NXFWBT PARAPET MOUNTING BRACKET

Made of AISI 316L electropolished stainless steel

Load rating: 70kg (154lb)

Height: 124mm (4.9in)



MPXCW POLE MOUNT ADAPTER

Made of AISI 316L electropolished stainless steel



MPXCW CORNER MOUNT ADAPTER

Made of AISI 316L electropolished stainless steel



EXH

EXPLOSION-PROOF HOUSING

Solid anticorrosional aluminium construction
 Epoxypolyester powder painting, RAL7032
 IP66
 2 holes for cable glands 3/4" NPT
 Version with device for the protection of the glass installed on the front of the housing (EXHD)
 Version available with reinforced heater 24Vac and special painting RAL7001 for temperature application down to -40°C (-40°F) (mod.EXHC003R)
 Supplied with heater. Sunshield as option.
 Internal usable area (WxHxL): 100x100x280mm (3.9x3.9x11in)



EXH CERTIFICATIONS AND MARKINGS

CERTIFICATION	MARKINGS
ATEX	Ex II 2G Ex d IIC T6 Gb / Ex II 2D Ex t IIIIC T85°C Db IP66
IECEX	Ex d IIC T6 Gb / Ex t IIIIC T85°C Db IP66
GOST-R	1 Ex d IIC T6 Gb / Ex tb IIIIC T85°C Db IP66
CNEX	Ex d IIC T6 Gb / DIP A21 TA T6 / Tamb: -20+50°C / Tamb: -40+50°C (when equipped with reinforced heater)

All updates on Certifications and Markings in www.videotec.com.

EXHC000G

EXPLOSION-PROOF HOUSING FOR THERMAL CAMERAS

Solid anticorrosional aluminium construction
 Epoxypolyester powder painting, RAL7032
 Germanium window
 IP66
 Housing supplied with heater. Sunshield as option



EXHC000G CERTIFICATIONS AND MARKINGS

CERTIFICATION	MARKINGS
ATEX	Ex II 2G Ex d IIC T6 Gb / Ex II 2D Ex t IIIIC T85°C Db IP66
GOST-R	1 Ex d IIC T6 Gb / Ex tb IIIIC T85°C Db IP66

All updates on Certifications and Markings in www.videotec.com.

BRACKETS AND ADAPTERS FOR EXPLOSION-PROOF PRODUCTS

EXWBJ BRACKET AND BALL JOINT FOR EXH EXPLOSION-PROOF HOUSING

Solid anticorodal aluminium construction

Epoxy polyester powder painting, RAL7032

Version available with RAL7001 special painting for low temperature applications (EXWBJ00R)

The EXBJ, alone, allows the column mount

Load rating: 35kg (77lb)



EXBJ000 BALL JOINT FOR THE COLUMN MOUNT OF EXH EXPLOSION-PROOF HOUSINGS

Solid anticorodal aluminium construction

Epoxy polyester powder painting, RAL7032

Available version with RAL7001 special painting for low temperature application (EXBJ00R)



NTC

THERMAL CAMERA AND STAINLESS STEEL HOUSING

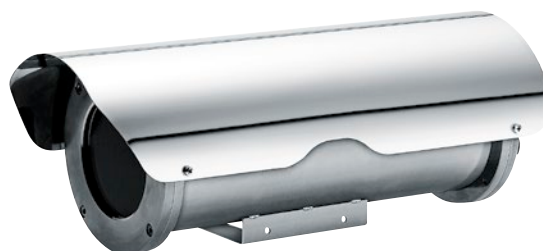
Made of AISI 316L electropolished stainless steel
 IP66/IP67
 Uncooled VOx microbolometer
 Resolution 320x256 or 640x512 (PAL)
 Sensitivity 50mK at F/1.0
 Wide range of lenses with different focal length: 9mm, 13mm, 19mm, 25mm, 35mm, 50mm, 60mm
 PAL/NTSC video output and RS422 serial control for remote camera configuration
 Configuration through OSD
 Germanium window



NXM

HOUSING FOR INSTALLATION IN AGGRESSIVE ENVIRONMENTS

Made of AISI 316L electropolished stainless steel
 IP66/IP68, submersible down to -50m (-164ft), equal to 5 BAR max pressure
 Cylindrical body enclosed by two 9mm-thick circular flanges
 2 PG13,5 cable glands nickel-plated brass for external connections
 Available accessories: heater and double heater (for temperatures down to -40°C (-40°F), camera power supply, air barrier + air filtering group and washer pump
 Internal usable area (WxHxL): 88x86x334mm (3.5x3.4x13.1in)



NXM36

HOUSING FOR INSTALLATION IN AGGRESSIVE ENVIRONMENTS

Made of AISI 316L electropolished stainless steel
 IP66/IP68, submersible down to -40m (-130ft), equal to 4 BAR max pressure
 Cylindrical body enclosed by two 6mm-thick circular flanges
 2 PG13,5 cable glands nickel-plated brass for external connections
 Available accessories: heater and double heater (for temperatures down to -40°C (-40°F), camera power supply, wiper and washer pump
 Internal usable area (WxHxL): 88x86x342mm (3.5x3.4x13.5in)



NTM

HOUSING FOR THERMAL CAMERAS IN AGGRESSIVE ENVIRONMENTS

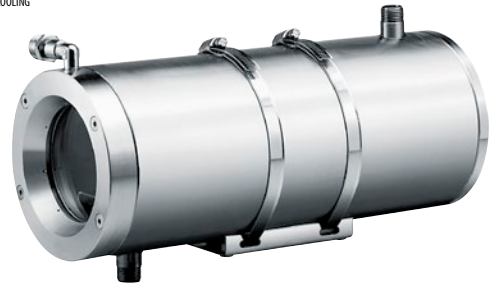
Made of AISI 316L electropolished stainless steel
 Germanium window
 Cylindrical body enclosed by two 9mm-thick circular flanges
 2 PG13,5 cable glands nickel-plated brass for external connections
 IP66/IP67
 Available accessories: camera power supply
 Internal usable area (WxHxL): 88x86x334mm (3.5x3.4x13.1in)



NXW

LIQUID-COOLED CAMERA HOUSING

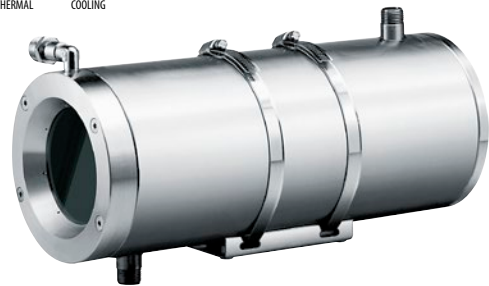
Made of AISI 316L electropolished stainless steel
 Steel cylindrical chamber for internal circulation of cooling liquid linked to an external circuit
 IP66/IP67
 Supplied air barrier
 2 PG13,5 cable glands nickel-plated brass for external connections
 Available accessories: camera power supply, air filtering group for glass cleaning, tempered glass (max 290°C (554°F)) quartz glass (max 400°C (752°F)) infrared glass (max 260°C (500°F))
 Internal usable area (WxHxL): 78x78x345mm (3.1x 3.1x13.6in)



NTW

LIQUID-COOLED HOUSING FOR THERMAL CAMERAS

Made of AISI 316L electropolished stainless steel
 Steel cylindrical chamber for internal circulation of cooling liquid linked to an external circuit
 Zinc-Selenium glass for thermal cameras, wavelength 7.5 - 14µm (up to 200°C/500°F)
 Sapphire glass for shortwave thermal cameras, wavelength 0.75 - 4.5µm (up to 400°C/752°F)
 Designed to operate in high temperature environments
 IP66/IP67
 Internal usable area (WxHxL): 78x78x345mm (3.1x 3.1x13.6in)



NXL

LARGE HOUSING FOR AGGRESSIVE ENVIRONMENTS

Made of AISI 316L electropolished stainless steel
 IP66/IP67
 Cylindrical body enclosed by two circular flanges, 12mm (0.47in) thick the front flange and 9mm (0.35in) thick the back flange
 4 PG13,5 cable glands nickel-plated brass for external connections
 Available accessories: heater, camera power supply, wiper, washer pump
 Internal usable area (WxHxL): 112x112x562mm (4.5x4.5x22.1in)



NTL

LARGE HOUSING FOR THERMAL CAMERAS

Made of AISI 316L electropolished stainless steel
 Germanium window
 For highly aggressive environments
 IP66/IP67
 Available with different window dimensions: Ø 55mm (2.1in), Ø 70mm (2.8in) and Ø 110mm (4.3in)
 Available accessories: heater, camera power supply
 Internal usable area (WxHxL): 112x112x562mm (4.5x4.5x22.1in)



ACCESSORIES FOR STAINLESS STEEL CAMERAS AND HOUSINGS

ONXAB2 AIR BARRIER

Made of AISI 316L electropolished stainless steel
Suggested pressure: 1Bar
Supplied with NXW housing and optional on NXM



HEATER

Thermostatically controlled heating element PTC
20W or 40W (Ton <= 15°C; Toff >= 22°C)
Available in 12Vdc/24Vac voltage or 120/230Vac voltage



VIPNX WIPER FOR HOUSING

Made of AISI 316L electropolished stainless steel
IP66/IP67
Different voltages available, 230Vac or 24Vac, both 50/60Hz
Connector 3+1 poles, easy wiring harness
Easy installation on NXM36, NXM and NXL housings



NXFIGRU AIR FILTERING GROUP

To be combined with ONXAB2 air barrier to clean the air from oil and water particles, generally coming from the compressor
Filtering of particles with diameter higher than 0.2 micron
Operating pressure 0.3÷2.5 BAR



WAS WASHER PUMP AND 5 OR 23 LITER TANK

Versions with delivery up to 5m (16ft), 11m (36ft), 30m (98ft)
Pump available in 230Vac, 24Vac and 120Vac (WASPT series, prearranged for DTWRX board for the remote control)
In the 11m (36ft) and 30m (98ft) delivery versions the lack of liquid in the tank is signalled following the automatic stop of the pump (except for 11m version of WAS series)



DTWRX TELEMETRY DATA RECEIVER FOR WIPER AND WASHER REMOTE CONTROL

Remote control of wiper and washer pump of WASPT series in stand-alone housings
RS485 communication
Remote controllable up to 1200m (3937ft) from the control keyboard



CAMERA POWER SUPPLY

It can be installed inside the housing
Available in different versions, 120/230Vac input and 24Vac/12Vdc output.



BRACKETS FOR STAINLESS STEEL CAMERAS AND HOUSINGS

NXWBS1 WALL MOUNT

Made of AISI 316L electropolished stainless steel
Load rating: 45kg (99lb)
Dimensions: 371x186mm (14.6x7.3in)
Available modular components: NXCOL and NXCW
Suitable for NTC, NXM36, NXM, NTM, NXW and NTW housings



NXWBL WALL BRACKET FOR NXL HOUSING

Made of AISI 316L electropolished stainless steel
Load rating: 45kg (99lb)
Length: 596mm (23.5in)
Available modular components: NXCOL and NXCW



NXCOL POLE MOUNT ADAPTER

Made of AISI 316L electropolished stainless steel
For pole diameters Ø 110-150mm (4.3-5.9in)
Load rating: 50kg (110lb)
Dimensions: 180x196mm (7.0x7.7in)
Suitable for NXWBS1, NXWBL and NXWBPTH1 brackets



NXCW CORNER MOUNT ADAPTER

Made of AISI 316L electropolished stainless steel
Load rating: 50kg (110lb)
Dimensions: 180x291mm (7x11.5in)
Suitable for NXWBS1, NXWBL and NXWBPTH1 brackets



P&T MOTORS AND TELEMETRY

P&T MOTORS

Outdoor Pan & Tilt have been designed and tested to be used in extremely severe operating conditions and under constant stress. A wide range of control systems is available, from a simple desktop controller to the most advanced range of control keyboards and telemetry receivers with microprocessors.

STAINLESS STEEL PAN & TILT

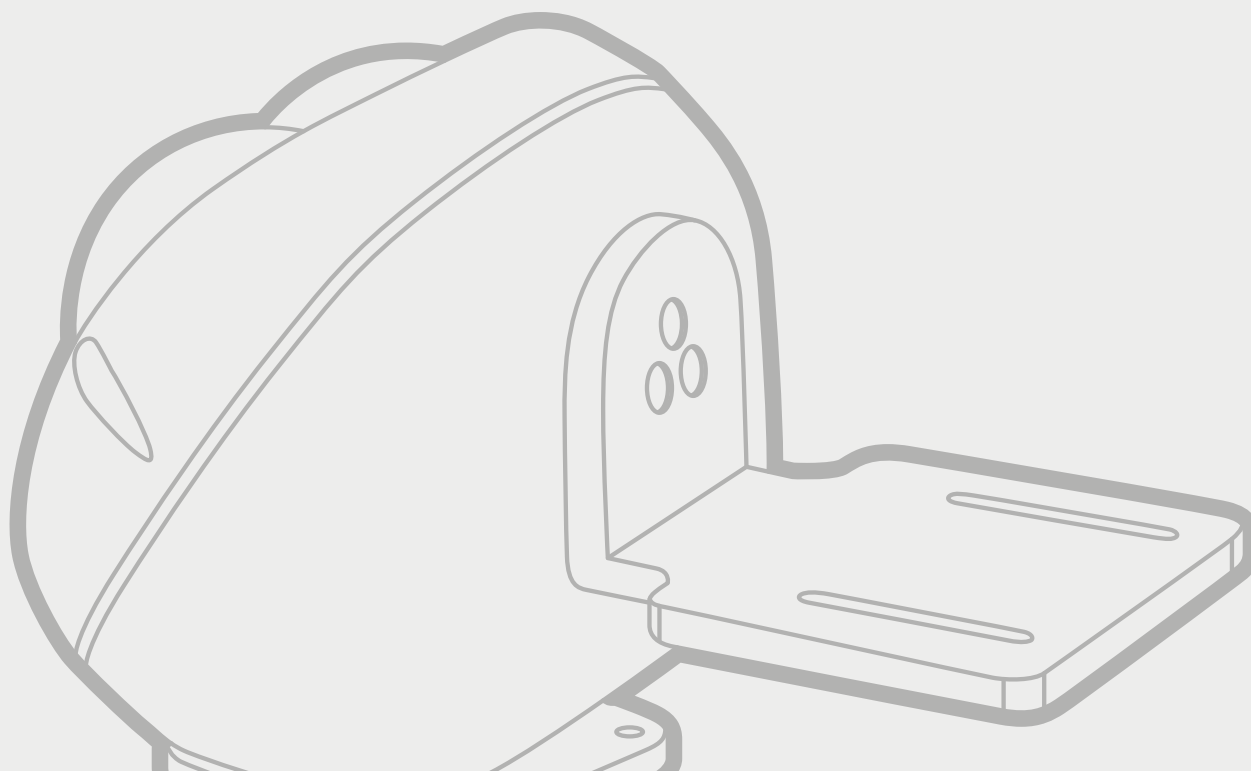
NXPTH Pan & Tilt, together with the stainless steel housing, was built to withstand the most severe and corrosive environmental conditions such as offshore, marine environments and industrial applications. The accurate mechanical construction and reliable motors reduce maintaining, even in situations with heavy mechanical stress.

TELEMETRY

A wide range of telemetry receivers have been designed for outdoor Pan & Tilt remote control, which includes the most basic to the most complete models, and enable Pan & Tilt function management and motorised lenses.

EXPLOSION-PROOF TELEMETRY

The EXDTRX series telemetry receiver enables installation in potentially explosive areas and controls the Pan & Tilt explosion-proof functions, amongst which the preset and lens functions.



PTH300

OUTDOOR PAN & TILT

- Loads up to 12kg (26lb)
- IP66
- Optional preset
- Made of aluminium
- Standard autopan function
- 24Vac and 230Vac, 50/60Hz versions
- Internally adjustable horizontal and vertical limit switches
- Horizontal fixed speed 6°/s, vertical fixed speed 3°/s



PTH355P

OUTDOOR VARIABLE SPEED PAN & TILT MOTOR

- Constructed from corrosion-proof aluminium
- The PTH300 Pan & Tilt motor is suitable for medium duty outdoor installations with loads up to 12kg balanced
- DC motors: (24Vdc)
- Made of aluminium
- Controlled by the DTRXDC telemetry receiver
- Preset function
- Internally adjustable horizontal and vertical limit switches
- Horizontal speed 30°/s, vertical 18°/s



PTH900

STURDY OUTDOOR PAN & TILT MOTOR

- Loads up to a 30kg (66lb)
- IP66
- Made of aluminium
- Standard autopan function
- Optional preset
- 24Vac and 230Vac, 50/60Hz versions
- Internally adjustable horizontal and vertical limit switches
- Horizontal fixed speed 6°/s, vertical fixed speed 3°/s



BRACKETS AND ADAPTERS FOR PAN & TILT MOTORS

PTAC WALL MOUNT FOR PTH300 SERIES AND LIGHT DUTY P&T MOTORS

Made of aluminium
Load rating: 35kg (77lb)



PTBC WALL BRACKET FOR PTH900 P&T MOTORS

Made of aluminium
Load rating: 50kg (110lb)



WFWBTA PARAPET BRACKET

Made of aluminium
Load rating: 50kg (110lb)



PTCC1 POLE MOUNT ADAPTOR

Made of aluminium
For pole diameters: 80÷150mm (3÷5.9in)
Load rating: 50kg (110lb)



WCWA CORNER MOUNT ADAPTER

Made of steel
Load rating: 30kg (66lb)



WSFPA POLE MOUNT ADAPTOR

Made of aluminium
It allows the internal cable management
Load rating: 30kg (66lb)
For pole diameters: 65÷110mm (2.6÷4.3in)



WCWGC CORNER MOUNT ADAPTER

Made of steel
Load rating: 50kg (110lb)



WCPA REINFORCING SUPPORT PLATE FOR POOR CONSISTENCY WALLS

Made of aluminium
Available with a supporting box with internal cable channel
Load rating: 50kg (110lb)



P&T/BRACKETS COMPATIBILITY

P&T MOTORS	WALL		COLUMN
	PTAC	PTBC	WFWBTA
LENGTH	360MM (14.2IN)	458MM (18IN)	185MM (7.3IN)
PTH300	✓	–	✓
PTH355P	✓	–	✓
PTH900	–	✓	✓

COMPATIBILITY BRACKETS/ADAPTERS

	P&T BRACKETS	
	PTBC	PTAC
POLE MOUNT ADAPTOR		
WSFPA	–	✓
PTCC1	✓	–
CORNER MOUNT ADAPTOR		
WCWA	–	✓
WCWGC	✓	–
SUPPORT PLATE ADAPTOR		
WCPA	–	✓

NXPTH

STAINLESS STEEL PAN & TILT

Made of AISI 316L electropolished stainless steel
 IP66/IP67
 Horizontal fixed speed 5°/s, vertical fixed speed 3°/s
 Max. load 40kg balanced (88lb)
 Presets potentiometers
 Versions 24Vac and 230Vac, 50/60Hz
 Suitable for NXM36, NXM, NXL, NTM, NTL and NTC housings



PTZ CAMERAS AND PTZ UNITS

CAMERA HOUSINGS

P&T MOTORS AND TELEMETRY

ILLUMINATORS

VIDEO CONTENT ANALYSIS

VIDEO MANAGEMENT AND CONTROL

VIDEO TRANSMISSION

CAMERA BRACKETS

BRACKETS AND ADAPTERS FOR NXPTH

NXFWBT PARAPET MOUNTING BRACKET

Made of AISI 316L electropolished stainless steel
 Load rating: 70kg (154lb)
 Compatible with: NXWBPTH1 bracket



NXWBPTH1 WALL BRACKET FOR NXPTH

Made of AISI 316L electropolished stainless steel
 Load rating: 70kg (154lb)
 Compatible with NXCOL, NXCW and NXFWBT modular components



NXCOL POLE MOUNT ADAPTER

Made of AISI 316L electropolished stainless steel
 For pole diameters Ø 110-150mm (4.3-5.9in)
 Load rating: 50kg (110lb)
 Suitable for NXWBS1, NXWBL and NXWBPTH1 brackets



NXCW CORNER MOUNT ADAPTER

Made of AISI 316L electropolished stainless steel



DTRX3

DATA TELEMETRY RECEIVER, 17 FUNCTIONS

11 standard functions for the control of P & T motors and zoom lenses, 6 functions for auxiliary services telemetry data (2x dry contacts, 1x 12Vdc, 1x 24Vac, wiper and washer)

Maintenance of configuration even in case of power loss

RS232, RS485 selectable communication

Selection of the Pan & Tilt power supply (24Vac or 230Vac) and camera (12Vdc or 24Vac)

Up to 40 presets

4 alarm inputs, (preset in case of alarm)

Various telemetry protocols available

Also available in 24Vac (DTRX324)

Operating temperature: -20°C + 50°C (-4°F up to 122°F)



DTMRX2

DATA TELEMETRY RECEIVER, 12 FUNCTIONS

11 standard functions for the control of Pan & Tilt motors and zoom lenses, 1 function for the control of one auxiliary service (dry contact)

RS232, RS485 selectable communication

Aux can be used for wiper operation

Various telemetry protocols available

Version 24Vac (DTMRX224)

Operating temperatures: -20°C / +50°C (-4°F / 122°F)

RS232, RS485 repeater for daisy chain configuration



DTRXDC

TELEMETRY DATA RECEIVER, 13 FUNCTIONS

For remote control of variable speed Pan & Tilt motor PTH355P and zoom lenses

13 functions (auxiliary functions 2xdry contacts)

14 presets

Up to 7 selectable speeds for autopan

RS232 and RS485 selectable communication

Various telemetry protocols available



DCRE485

SERIAL DATA DISTRIBUTOR

1 input, 8 serial outputs in RS485

Serial data back on eight outputs at the same time

Max connection distance 1200m (3937ft)



DTWRX

TELEMETRY DATA RECEIVER FOR WIPER AND WASHER REMOTE CONTROL

Remote control of wiper and washer pump of WASPT series in stand-alone housings

RS485 communication

Remote controllable up to 1200m (3937ft) from the control keyboard



EXDTRX

TELEMETRY RECEIVER FOR EXPTC AND EXPTD EXPLOSION-PROOF PAN & TILT

17 functions, preset, glass protection device and alarm feature included

IP66

230Vac or 24Vac power supply

EXDTRX3 feeds the Pan & Tilt heater

4 holes for cable glands 3/4" NPT

Maintenance of configuration even in case of power loss

Up to 40 preset positions (MACRO protocol)

4 alarm inputs (prepositioning in case of alarm)

Preset Autotest functions

RS232, RS485 selectable communication

Compatible with protocol PELCO D



EXDTRX CERTIFICATIONS AND MARKINGS

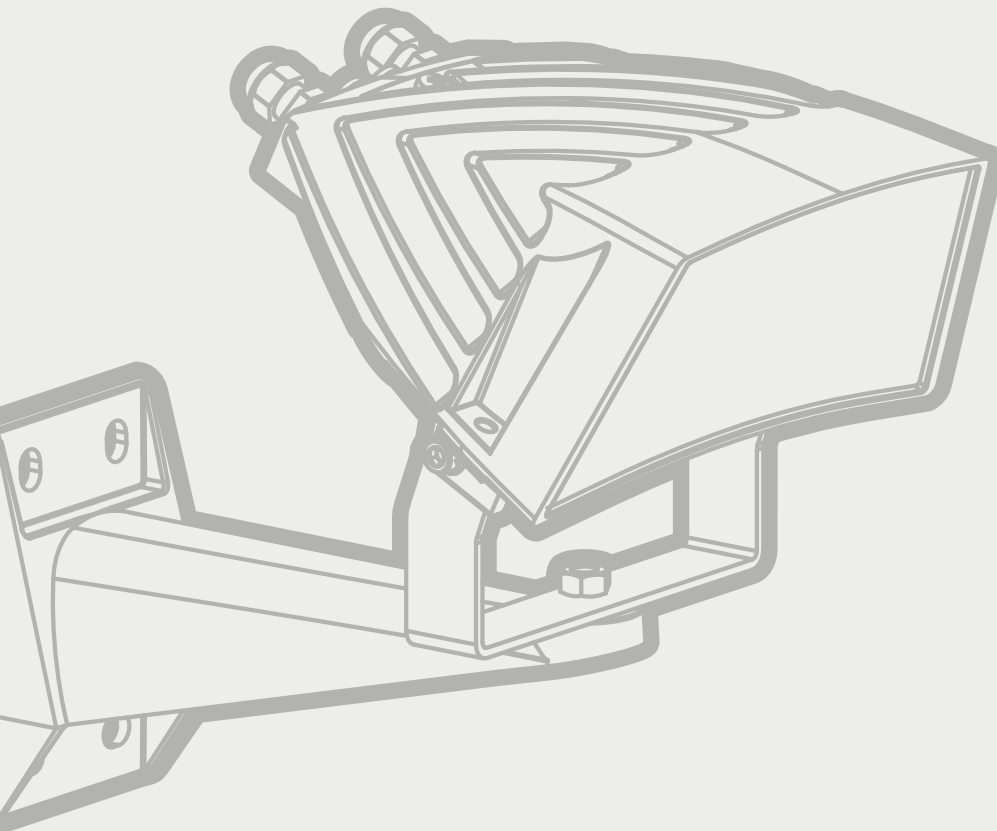
CERTIFICATION	MARKINGS
ATEX	Ex II 2GD Ex d IIC T6 / Ex tb IIIC T85°C
GOST-R	1 Ex d IIC T6 / DIP A21 Ta85°C Tamb -20/+40°C / IP66

All updates on Certifications and Markings in www.videotec.com.

ILLUMINATORS

ILLUMINATORS

The wide range of illuminators for the night monitoring guarantees an excellent visual quality combined with a high energy efficiency and a substantial reduction of installation and maintenance costs. The GEKO illuminators can be used in combination with Standard Resolution and Megapixel cameras.



GEKO IRH LED ILLUMINATOR

High efficiency ultimate SMD LED technology
 High efficiency heat sink body to ensure maximum LEDs durability
 Strong aluminium structure
 Beam pattern: 10°, 30°, 60°
 Wavelengths: 850nm, 940nm e white light
 Consumption: 6-12W
 Adjustable built-in photocell
 VOLT free relay contact for external activation
 It can be mounted under a housing using the OSUPPIR bracket
 Supplied with a wall-mount bracket
 IP66/IP67



GEKO IRH white light



HOV + OSUPPIR + GEKO IRH + WBJA

GEKO IRH - BEAM PATTERN AND ACHIEVABLE DISTANCES

HORIZONTAL/VERTICAL BEAM PATTERNS	MAXIMUM DISTANCE			
	WAVELENGTH 850NM, LOW POWER	WAVELENGTH 850NM, HIGH POWER	WAVELENGTH 940NM	WHITE LIGHT
10°	100m (328ft)	140m (460ft)	100m (328ft)	–
30°	60m (197ft)	84m (276ft)	60m (197ft)	60m (197ft) ¹
60°	40m (131ft)	56m (184ft)	40m (131ft)	40m (131ft) ¹

¹ Achievable distances with camera in Day mode (colour image)

The distances and the performance depend on the camera/lens used and on the environmental conditions.

GEKO IRH ACCESSORIES

IRHPS POWER SUPPLY MODULE FOR GEKO IRH LED ILLUMINATOR

Power supply:
 • IN 230Vac 50/60Hz OUT 24Vac 30W
 • IN 120Vac 50/60Hz OUT 24Vac 30W

IP66/IP67



SUPPORTS AND ADAPTERS FOR GEKO

OSUPPIR BRACKET FOR 1 ILLUMINATOR

In aluminium, painted with epoxy polyester powder RAL9002

For PUNTO, VERSO, VERSO COMPACT, HOV and HEG housings

When installed under the PUNTO housing, this mount is compatible only in combination with WBJA or WBMA wall brackets



GEKO IRN LED ILLUMINATOR

High efficiency heat sink body to ensure maximum LEDs durability
 Strong aluminium structure
 The illuminator is supplied in 24Vac/12-24Vdc or 90-240Vac
 Beam patterns: 10°, 30°, 60°
 Wavelengths: 850nm, 940nm e white light
 Consumption: 30W
 Adjustable light intensity
 Adjustable built-in photocell
 VOLT-free relay input for external activation
 VOLT free relay output for Day/Night camera
 Supplied with a wall-mount bracket
 IP66/IP67



GEKO IRN - BEAM PATTERN AND ACHIEVABLE DISTANCES FOR ONE ILLUMINATOR

HORIZONTAL AND VERTICAL BEAM PATTERNS	MAXIMUM DISTANCE		
	850NM	940NM	WHITE LIGHT
10°	240m (787ft)	140m (460ft)	–
30°	130m (427ft)	80m (262ft)	120m (393ft) ¹
60°	80m (262ft)	60m (197ft)	90m (295ft) ¹

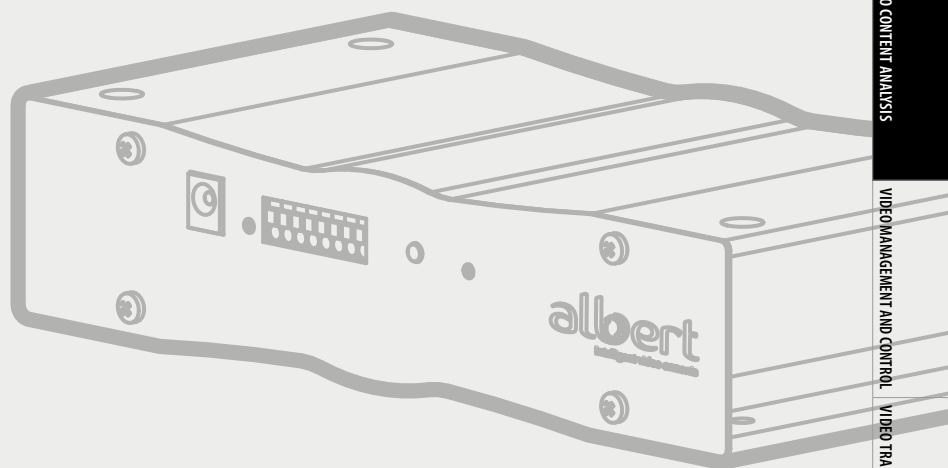
¹ Achievable distances with camera in Day mode (colour image)
 The distances and the performance depend on the camera/lens used and on the environmental conditions.

CAMERA BRACKETS	VIDEO TRANSMISSION	VIDEO MANAGEMENT AND CONTROL	VIDEO CONTENT ANALYSIS	ILLUMINATORS	P&T MOTORS AND TELEMETRY	CAMERA HOUSINGS	PTZ CAMERAS AND PTZ UNITS
-----------------	--------------------	------------------------------	------------------------	--------------	--------------------------	-----------------	---------------------------

VIDEO CONTENT ANALYSIS

VIDEO CONTENT ANALYSIS

ALBERT is a distributed intelligence system that is based on cooperation between the unit and with an advanced movement analysis system. ALBERT is especially suited to control perimeters and in applications where many events may occur simultaneously, and where operators must control a large number of cameras.



PTZ CAMERAS AND PTZ UNITS

CAMERA HOUSINGS

P&T MOTORS AND TELEMETRY

ILLUMINATORS

VIDEO CONTENT ANALYSIS

VIDEO MANAGEMENT AND CONTROL

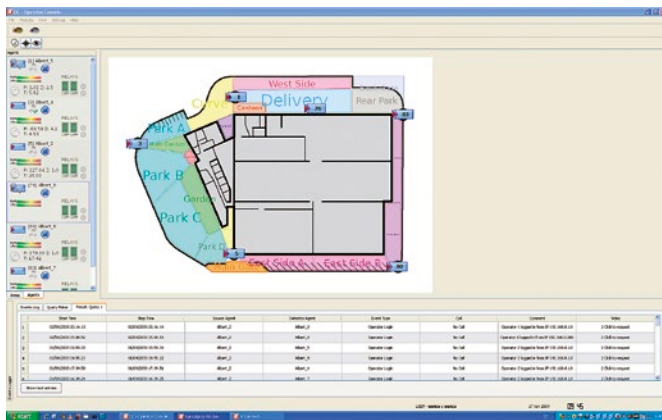
VIDEO TRANSMISSION

CAMERA BRACKETS

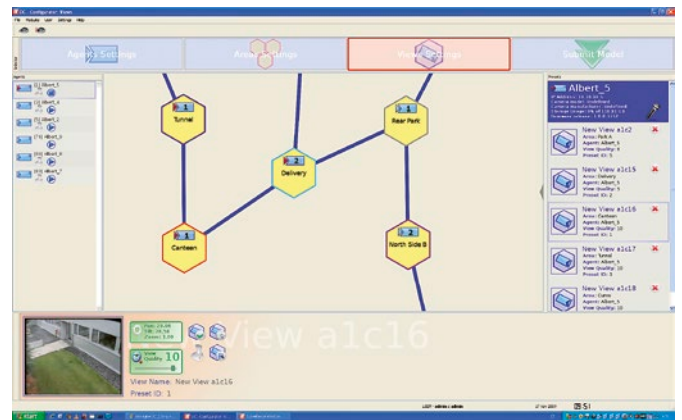
ALBERT

ENCODER FOR VIDEO CONTENT ANALYSIS AND SMART SYSTEM MANAGEMENT

- Advanced Event Detector
- Cooperation between ALBERTs units
- Distributed recording system
- Self-adaptive algorithms
- Drag'n'drop set-up
- 3D calibration of the camera
- PTZ and ULISSE units control
- Supported by Milestone Xprotect® Suite
- H264, full D1, 30 fps
- Resolution and frame rate adjustable
- Integration in third party software
- Hard Disk H.264 recording (optional)
- Multiple streams, adaptive frame rate
- Two-way audio
- Alarm inputs and relay outputs
- SD Secure Digital Slot
- Accessory: USB-RS485 converter for PC connection of DCJ control keyboard



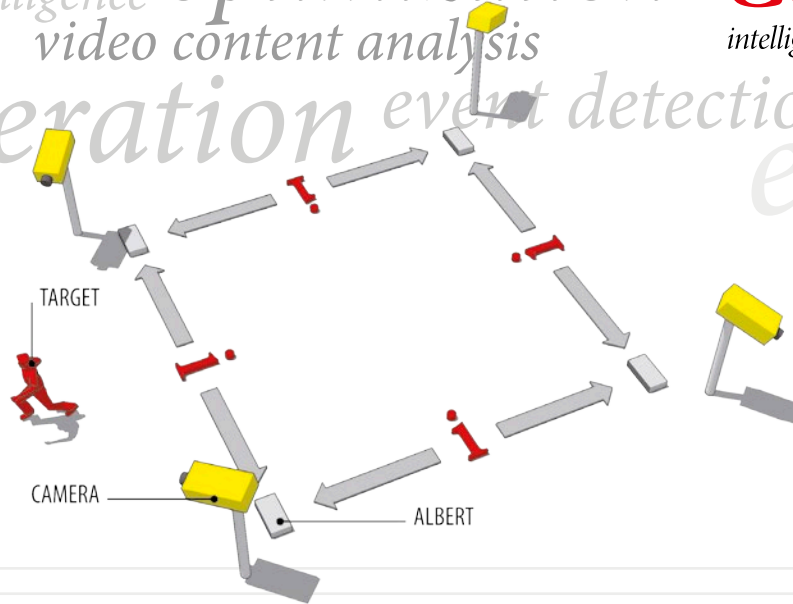
Software in action showing views and event log bar.



Preset settings. Association of cameras to areas of interest with easy drag and drop.

artificial intelligence optimization
 video content analysis
 cooperation event detection
 edge

albert
 intelligent video armonia.

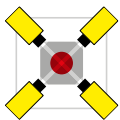


KEY FEATURES



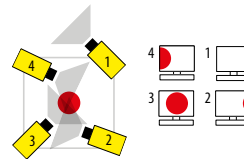
▪ **ASSISTED NAVIGATION**

Proposes alternative live views of the event, to provide more perspectives and a better view.



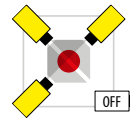
▪ **FOCUS ON THE ALARMED AREA**

When a unit detects an event it will send a priority message to the other units. At this point, all the available units will swiftly focus their cameras on the alarmed area.



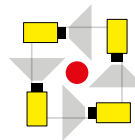
▪ **AUTOMATIC RECORDING**

The adjacent cameras will automatically record a number of films of the same event, providing alternative images from a variety of perspectives.



▪ **REDUNDANT SYSTEM**

If any unit is tampered with, the adjacent cameras will cover the area of the redundant unit until it has been repaired.



▪ **INTELLIGENT PATROLLING**

The units cooperate to achieve optimal cover of the areas, reducing the superimposing of cameras during patrolling.



EVENT DETECTION

- NO FALSE ALARM IN CASE OF:



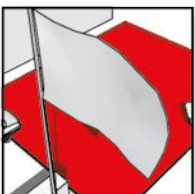
MOVEMENT OF LEAVES



SHADOW VARIATIONS



LIGHT / WEATHER VARIATIONS

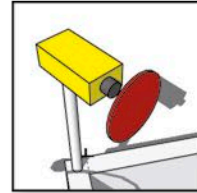


FLOATING OBJECT MOVEMENTS

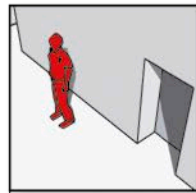
VCA RULES

- IN ADDITION TO THE SELF-ADAPTING DETECTION OF EVENTS, THE USER CAN ESTABLISH A SERIES OF RULES, SUCH AS:

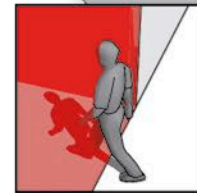
CAMERA TAMPERING



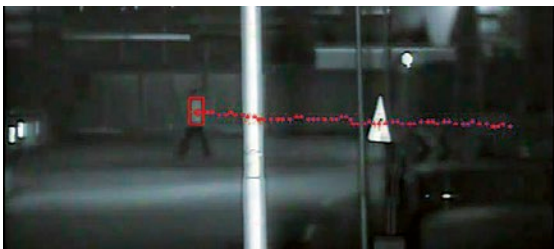
PROLONGUED PRESENCE INSIDE AN AREA



VIRTUAL FENCE



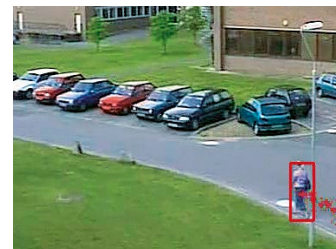
EVENT DETECTION: SCREENSHOT SAMPLES



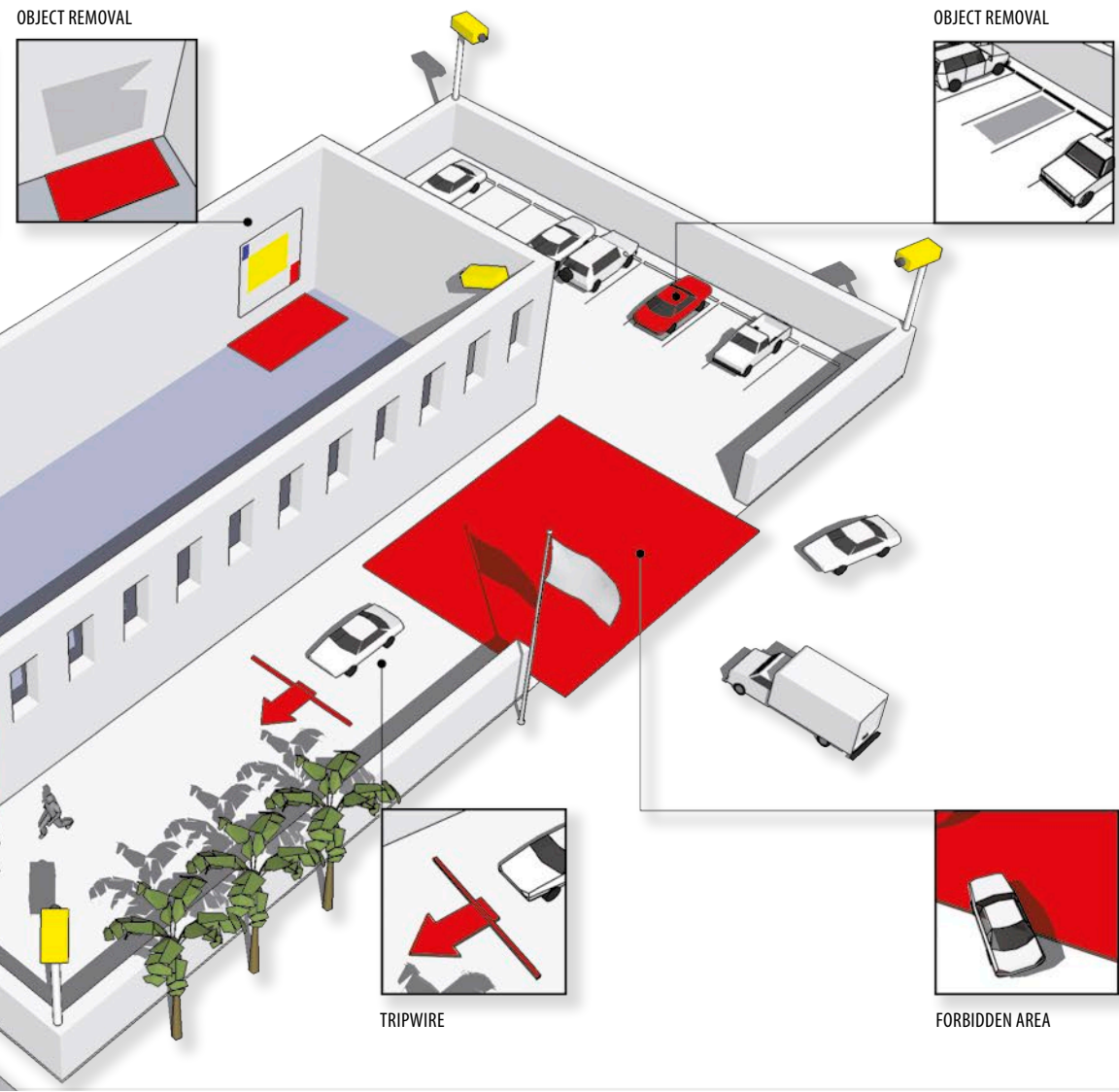
NIGHT-VISION PARKING: FORBIDDEN AREA / INTRUSION.



THE NATURAL WATER MOTION IS CONSIDERED NORMAL, AND IT DOES NOT GIVE ANY FALSE ALARM.



TRAFFIC ROAD: TRIPWIRE.



SEARCH FOR "VIDEOTEC ALBERT" ON  **YouTube**
Broadcast Yourself™

CAMERA BRACKETS	VIDEO TRANSMISSION	VIDEO MANAGEMENT AND CONTROL	VIDEO CONTENT ANALYSIS	ILLUMINATORS	P&T MOTORS AND TELEMETRY	CAMERA HOUSINGS	PTZ CAMERAS AND PTZ UNITS
-----------------	--------------------	------------------------------	------------------------	--------------	--------------------------	-----------------	---------------------------

VIDEO MANAGEMENT

CONTROL KEYBOARDS

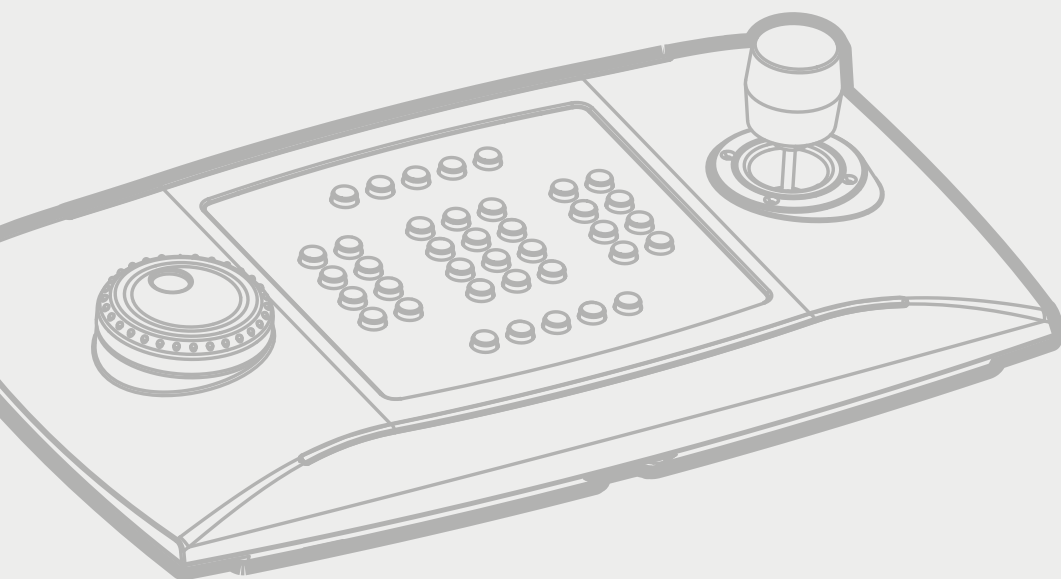
Our keyboards control a wide range of switching devices and most of the speed domes and PTZ available on the market. In addition, the product range includes video transmitters/receivers over twisted pair cable for video signals over long distances.

MATRIX

The system video matrix offers a solution to collect and manage images that are able to switch video inputs onto independent outputs with synchronised sequence among the various monitors.

VIDEO DISTRIBUTORS

The video distributor is an important component in a TVCC system where the same signal is to be sent to many elaboration points.



DCZ

UNIVERSAL KEYBOARD FOR MANAGING CCTV APPLICATIONS FROM PC

USB keyboard for managing CCTV applications, with joystick and jog shuttle
Functions determined by the controlled application

Customizable features

The user can easily personalize and print several pre-cut sheets supplied for this purpose

The keyboard can be turned round so that both right- and left-handed users can use all the functions with ease

HID Game Controller emulation for the use with the most important VMS (Avigilon Control Center, Ganz-VsolP, Exacq Vision, Milestone XProtect®, Genetec Omnicast 4.2, Mirasys-DVMS, Seetec ProBox, Sony-Real Shot Manager, Luxriot DVR)*

*Functionality may be limited depending on the VMS used.



DCJ

VIDEO AND TELEMETRY CONTROL KEYBOARD

Three axis proportional joystick

Control of all Videotec matrix

Communications:

- RS485 serial communication with video matrix and multiplexer
- 2 RS485 independent telemetry lines
- RS232 serial communication connection with PC for firmware update

Direct control or through Videotec matrix series SM of third parties products

Up to 9999 video channels, 999 telemetry receivers on each telemetry line and 99 monitors

More than 40 protocols supported



DCTEL

MATRIX AND TELEMETRY CONTROL KEYBOARD

Suitable for SM82A, SM164B matrix and telemetry receivers

Control of video switching, sequences and alarm reset

Telemetry control through matrix or directly by RS485 dedicated serial output

Normally fed by SM82A, SM164B matrix

2 outputs for RS485 serial communication (1 for matrix control, 1 for telemetry independent control)

Both PELCO D and ENEO Protocols are supported



USB485

USB TO RS485 CONVERTER

Suitable for connecting a DCJ Keyboard to a PC

USB 1.1 - 2.0 Full Speed compliant

No external power supply

ESD, EFT, Lightning protection at USB and RS485 Data line

Transmission speed up to 115.2 Kbps

Driver supports: Windows Server 2008 / Windows Server 2008 x64 / Windows Vista / Windows Vista x64 / Windows Server 2003 / Windows Server 2003 x64 / Windows XP / Windows XP x64 / Windows 2000 / Windows 7 / Windows 7 x64 / Windows 8 / Windows 8 x64 / Linux



SM328B

SYSTEM VIDEO MATRIX PAL/NTSC

- 32 video inputs (composite PAL/NTSC 1Vpp) with video loss detection
- 8 video outputs (composite PAL/NTSC 1Vpp) with OSD character (free text, date and time)
- 32 alarm inputs, 8 relay outputs, 1 buzzer
- Day/night sequences (32-step each) for each monitor
- Aux A can be used to connect more SM328B matrix in Master/Slaves or Parallel systems
- Privacy video masking function
- 4 RS485 keyboard inputs RJ11 connectors (max 8 keyboards)
- 2 Aux RS485 lines output to control telemetry and other third parties devices
- VCR Trigger input to connect a time lapse VCR
- On alarm: actions on monitors (sequences and cameras) and on telemetry (scan on home positions or patrol)
- Camera exclusion feature if the monitor is used in public places



SM164B

SYSTEM VIDEO MATRIX PAL/NTSC

- 16 video inputs
- 4 independent video outputs with text generator
- Telemetry over the coax on the 16 video inputs and on auxiliary serial output (RS485)
- Controllable by PC (RS232)
- 16 alarm inputs, one output contact, trigger VCR and alarm reset
- 4 RS485 serial inputs for max 4 remote keyboards
- Privacy video masking function
- Camera exclusion feature if the monitor is used in public places



SM82A

SMALL VIDEO MATRIX PAL/NTSC

- 8 inputs
- 2 independent video outputs
- Telemetry over the coax on the 8 video inputs and on auxiliary serial output (RS485)
- 8 alarm inputs, 1 output contact, VCR trigger and alarm reset
- 15 keys local keypad
- 2 RS485 serial inputs for max 2 remote keyboards
- Privacy video masking function
- Camera exclusion feature if the monitor is used in public places



VD

VIDEO DISTRIBUTORS

- Versions with 1, 4, 8 inputs and 8, 16 outputs
- For color or B/W video signals
- The input signal is amplified and distributed to the available outputs
- By means of VD816PR1 and VD48P1 versions, it is possible to select how many outputs can be associated to a video input



COMPATIBILITY TELEMETRY/RECEIVERS AND P&T

	DCTEL	DCJ
Max receivers	16	999 ¹
Autopan / Preset	✓	✓
Patrol	–	✓
TELEMETRY RECEIVER/P&T		
ULISSE COMPACT, ULISSE COMPACT THERMAL, ULISSE, ULISSE PLUS, ULISSE MAXI, MAXIMUS MPX, MAXIMUS MPXT	✓	✓
DTRXDC	–	✓
DTRX3	✓	✓
DTMRX	✓	✓
DTMRX24	✓	✓

¹ On each telemetry line.

COMPATIBILITY PROTOCOLS/KEYBOARDS AND MATRIX

PRODUCTS	PROTOCOLS ¹	MATRIX ²	
		DCJ	SM328B
Dome	BOSCH	HW INTFC ³	–
	ELBEX	✓	–
	ERNITEC	✓	–
	HITRON	✓	✓
	JVC	✓	–
	PANASONIC	✓	–
	PELCO	✓	✓
	SAMSUNG	✓	–
	SANYO	–	–
	SENSORMATIC	✓	–
Telemetry receiver	ENEO	✓	✓

¹ Please contact our customer service for the complete list of supported protocols.

² Meaning control by DCJ keyboard through serial port RS485 of matrix SM series. Because DCJ may be interfaced with equipment not manufactured by Videotec, the possibility exists that the interface protocols have changed or are in a different configuration from earlier tested units from us. Videotec recommends a bench test prior to installation. Videotec will not be liable for any installation costs or lost revenues in the event a compatibility problem.

³ HW INTFC Hardware Interface needed: RS485/RS232 adapter RS232/BIPHASE converter (Bosch mod.LTC8786).

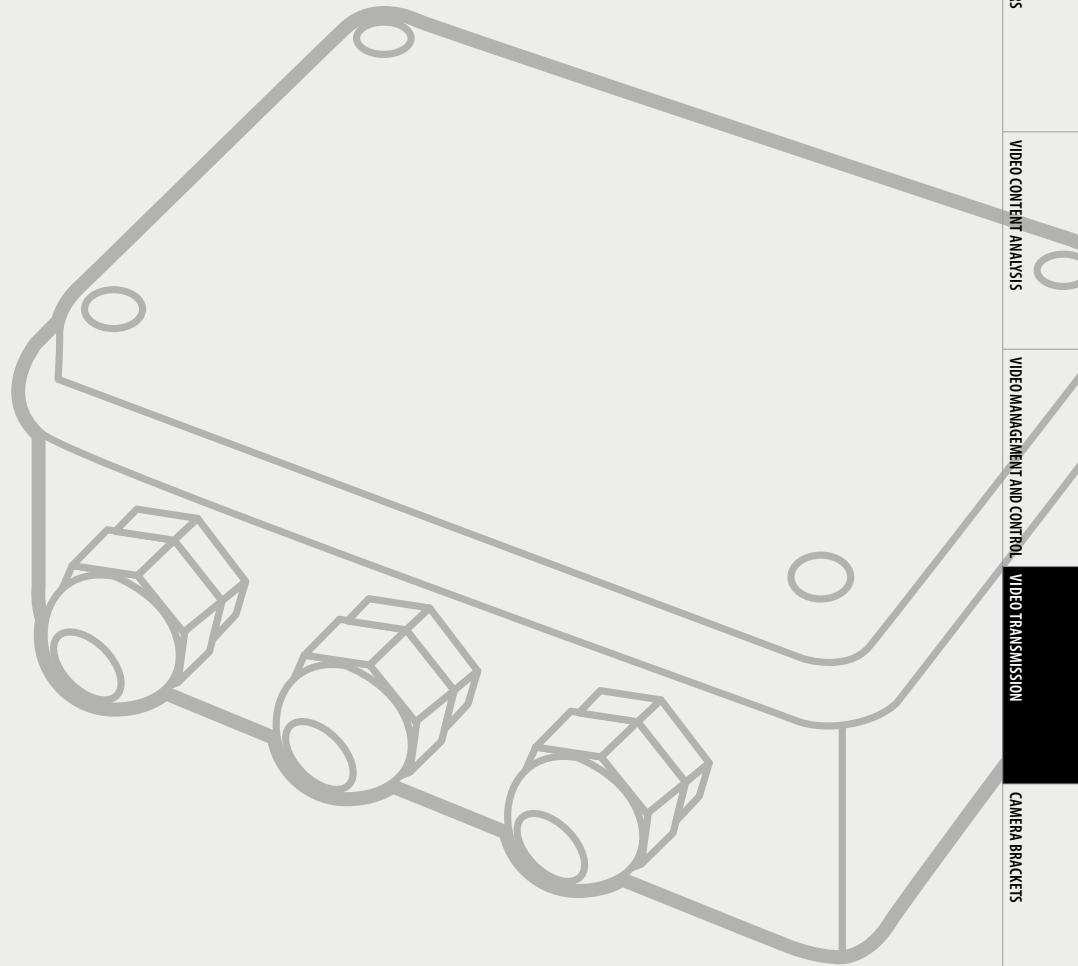
COMPATIBILITY VIDEO SWITCHING/CONTROL KEYBOARDS

	SM82A	SM164B	SM328B
Max video inputs	8	16	32
Max video outputs	2	4	8
Max operators	2 (+ 1 locally)	4	8
Max alarms	8	16	32
Telemetry	RS485	RS485	RS485
KEYBOARDS			
DCTEL	✓	✓	–
DCJ	✓	✓	✓

VIDEO TRANSMISSION

VIDEO TRANSMISSION

Videotec video transmission devices comprise pair cable transmitters/receivers to send long-distance signals.



PTZ CAMERAS AND PTZ UNITS

CAMERA HOUSINGS

P&T MOTORS AND TELEMETRY

ILLUMINATORS

VIDEO CONTENT ANALYSIS

VIDEO MANAGEMENT AND CONTROL

VIDEO TRANSMISSION

CAMERA BRACKETS

TWM2

SMALL ACTIVE TWISTED-PAIR VIDEO TRANSMITTER

Transmission of B/W or color video signal
 Dimensions with BNC (connector not included): 40x25x63mm (1.57x0.98x2.5in)
 Protected from ground loops and over voltage
 Maximum distance to the receiver: up to 1500m (4900ft) for colour video signal, up to 2000m (6900ft) for B/W with UTP cat.5 cable



TWT2

OUTDOOR ACTIVE TWISTED PAIR VIDEO TRANSMITTER

Transmission of B/W or color video signal
 Small IP56 weatherproof box
 Maximum distance to the receiver: up to 1500m (4900ft) for colour video signal, up to 2000m (6900ft) for B/W with UTP cat.5 cable
 Protected from ground loops and over voltage
 Available version 230Vac (mod. TWT2A)



TWRB2

OUTDOOR TWISTED-PAIR VIDEO RECEIVER

Reception of B/W or color video signal
 Small IP56 weatherproof box
 Maximum distance to the transmitter: up to 1500m (4900ft) for colour video signal, up to 2000m (6900ft) for B/W with UTP cat.5 cable
 Protected from ground loops and over voltage
 Available version in standard Europe rack (TWRR2)



TWRR2

TWISTED-PAIR RACK VERSION VIDEO RECEIVER

Europe standard board
 Same technical feature of the TWRB2
 Maximum distance to the transmitter: up to 1500m (4900ft) for colour video signal, up to 2000m (6900ft) for B/W with UTP cat.5 cable
 Protected from ground loops and over voltage



TWRC1

RACK BOX FOR TWRR2 CARDS

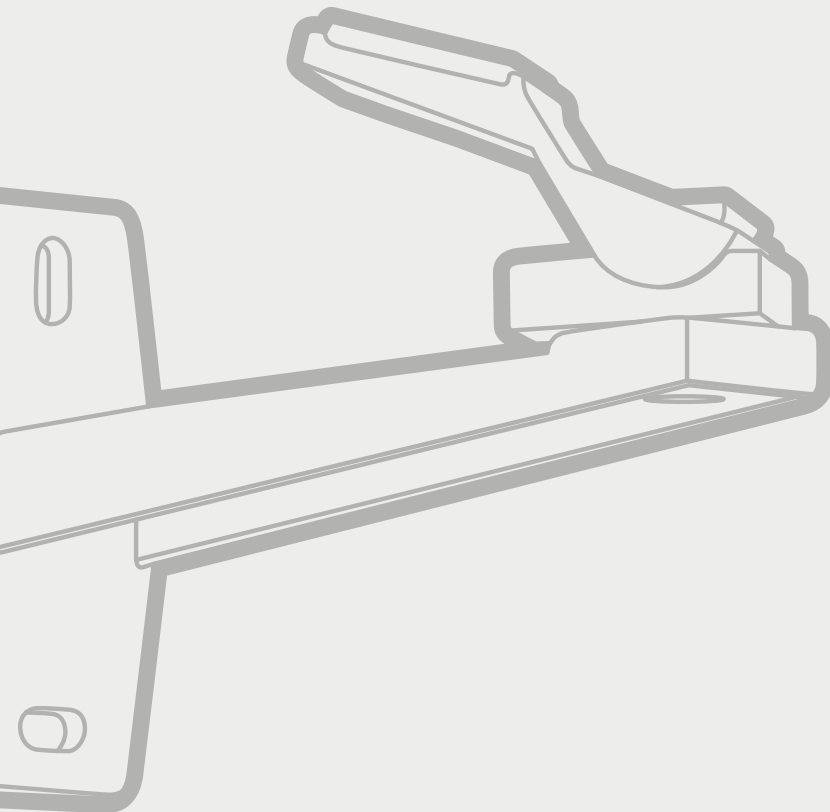
Up to max 14 TWRR2
 19" rack, 3HE
 Power supply included
 13-place rack case with closing plates for unused places



CAMERA BRACKETS

CAMERA BRACKETS

A reliable solution even for the simplest indoor installation of any type of camera. These sturdy brackets don't fear the wear and are extremely flexible, as can be installed and adapted to any kind of surface.



WBCAA**WALL AND CEILING MOUNT**

Made of aluminium, color RAL9002

Load rating: 5kg/11lb

Environment: Indoor / Outdoor

Length: 170mm (6.7in)

**WBCLA****WALL AND CEILING MOUNT**

Made of tecnopolymer material

Load rating: 3kg (6.6lb)

Length: 173mm (6.8in)

Adjustment and fixing by only one bolt

**WBCV****SERIES OF WALL AND CEILING BRACKETS**

Made of aluminium with a nylon base

Load rating: 2kg (4.4lb)

Length: 80, 140, 190mm (3.1, 5.5 and 7.4in)

50mm (1.9in) optional extension (WBCP5A)

**WB CD****SERIES OF WALL AND CEILING BRACKETS**

Made of aluminium with swivel and nylon base

Load rating: 1kg (2.2lb)

Length: 80, 140, 190mm (3.1, 5.5 and 7.4in)

50mm (1.9in) optional extension (WBCP5A)



LXBKC1

WALL AND CEILING MOUNT

In fiberglass reinforced nylon, black color

Load rating: 1kg (2.2lb)

Length: 100mm

Fully adjustable swivel head



LXBKC2

WALL AND CEILING EXTENSIBLE MOUNT

In fiberglass reinforced nylon, black color

Load rating: 2kg (4.4lb)

Extensible length: from 125mm to 190mm (from 4.9in to 7.5in)

Fully adjustable swivel head





www.videotec.com

PRINTED IN ITALY © 2015 VIDEOTEC S.P.A.

**HEADQUARTERS ITALY**

VIDEOTEC S.p.A.

Via Friuli, 6 - I-36015 Schio (VI) - Italy

Tel. +39 0445 697411 - Fax +39 0445 697414

Email: info@videotec.com

FRANCE

VIDEOTEC FRANCE SARL

Immeuble Le Montreal, 19bis Avenue du Québec, ZA de Courtaboeuf

91140 Villebon sur Yvette - France

Tel. +33 1 60491816 - Fax +33 1 69284736

Email: info.fr@videotec.com

AMERICAS

VIDEOTEC SECURITY, Inc.

Gateway Industrial Park, 35 Gateway Drive, Suite 100

Plattsburgh, NY 12901 - U.S.A.

Tel. +1 518 825 0020 - Fax +1 518 825 0022

Email: info.usa@videotec.com - www.videotec.us

ASIA PACIFIC

VIDEOTEC (HK) Ltd

Flat 8, 19/F. On Dak Industrial Building, No. 2-6 Wah Sing Street

Kwai Chung, New Territories - Hong Kong

Tel. +852 2333 0601 - Fax +852 2311 0026

Email: info.hk@videotec.com

WWW.VIDEOTEC.COM