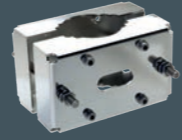
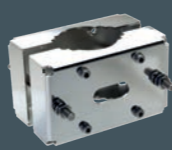
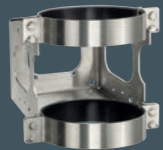
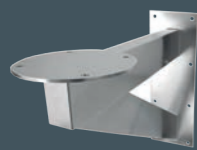


Xtreme accessories siquaring your world



Model	SA-WP10	SA-WP25	SA wall mounting bracket F	SA pole mounting adaptor F	SA pole top mount F
Description	10 litres washer tank with self priming submersible pump, 10 meters EPDM anti-algae black rubber hose	25 litres washer tank with self priming submersible pump, 10 or 15 meters EPDM anti-algae black rubber hose	Wall mounting bracket for SA fixed camera housings	Pole mounting adapter for SA wall mounting bracket F	Pole top mount with swivel joint for SA fixed camera housings
Only in combination with	-	-	SA Fixed camera housings	SA wall mounting bracket F	SA fixed camera housings
Material	Frame and optional cabinet AISI 316L stainless steel; Tank HDPE HMW	Frame: AISI 316L stainless steel; Tank: HDPE HMW	AISI 316L stainless steel	AISI 316L stainless steel	AISI 316L stainless steel
Weight	empty 4 kg (9 lbs); full 14 kg (31 lbs); cabinet 14 kg (31 lbs)	empty 7 kg (15 lbs); full 32 kg (71 lbs);	2 kg (4 lbs)	3 kg (7 lbs)	1 kg (2 lbs)
Maximum delivery head	10 m	10 m	-	-	-
Ingress protection	IP66	IP66	-	-	-
Voltage	24 Vac; 110 Vac; 230 Vac	24 Vac; 110 Vac; 230 Vac	-	-	-
Power consumption	50 W	10 meters 50W; 15 meters 80 W	-	-	-
Capacity	10 l	10 l	-	-	-
Dimensions	235x353x290 mm	315x527x355 mm	250x159x109 mm	196x219x250 mm	522.5x350x200 mm
Options	Float switch; 316L stainless steel cabinet	Float switch; 15 m delivery head	-	-	-



Model	SA wall mounting bracket P	SA wall mounting bracket H	SA pole mounting adaptor H	SA Sunshield H
Description	Wall mounting bracket for SA PTZ camera stations	316L wall mounting bracket for SA dome cameras	316L pole mounting adapter for SA wall mounting bracket H	316L sunshield for SA dome cameras
Only in combination with	SA PTZ camera stations	SA dome cameras	SA wall mounting bracket H	SA wall mounting bracket H
Material	AISI 316L stainless steel	AISI 316L stainless steel	AISI 316L stainless steel	AISI 316L stainless steel
Weight	8 kg (18 lbs)	5 kg (11 lbs)	3 kg (7 lbs)	3 kg (7 lbs)
Dimensions	622.5x200x350 mm	290x203x213 mm	196x219x250 mm	295x287x353 mm

Siqua B.V
Zuidelijk Halfmond 4, 2801 DD Gouda
The Netherlands
T +31 18 25 92 333
www.siqua.com

Siqua is part of TKH Security Solutions, a division of the TKH Group. TKH Security Solutions offers a wide range of systems for access control, surveillance, intrusion detection and video management.



Xtreme cameras

Product line card

www.siqua.com



Xtreme cameras siquaring your world



Harnessing the power of the sea
BlueTEC is an ambitious renewable energy project off the coast of the Dutch island of Texel. Consisting of a floating platform and a set of tidal turbines, it generates power through the kinetic energy of sea currents. Siquira participated in this demonstration project by implementing its SA-BC820H1 P, a safe-area IP camera (Xtreme camera) designed to withstand harsh marine environments. The camera offers brilliant full-HD images, motorised 18x optical zoom and full PTZ capabilities.

Other product groups



Model	Analogue			IP											
	SA-BC36 F	SA-BC36 P	HD18 SA	SA-BC820H1 F	SA-BC820H1 P	SA-TC620-PID F			SA-TC620 P			SA-BC820H1-TC620 D	HSD820H3 SA	HSD870H3 MDC	
Description	316L analogue 36x zoom fixed camera	316L analogue 36x zoom PTZ camera station	316L analogue PTZ Dome camera	316L 1080p IP 18x zoom fixed camera	316L 1080p IP 18x zoom PTZ camera station	316L thermal IP fixed camera with PID			316L thermal IP PTZ camera station			316L dual imager PTZ camera station	316L IP 1080p IP 30x zoom PTZ dome camera	316L 1080p 3G HD-SDI/ IP 30x zoom PTZ Marine Dome Camera	
Body material: Stainless steel 316 L, electro-polished	✓	✓	✓	✓	✓	✓			✓			✓	✓	✓	
Image sensor	1/4" CCD	1/4" CCD	1/4" CCD	1/2.7" CMOS	1/2.7" CMOS	Uncooled microbolometer			Uncooled microbolometer			BC820H1 and TC620	1/2.8" Progressive scan CMOS	1/2.8" Progressive scan CMOS	
Focal length	Motorised 36x optical zoom 3.4 - 122.4 mm	Motorised 36x optical zoom 3.4 - 122.4 mm	Motorised 36x optical zoom 3.4 - 122.4 mm	Motorised 18x optical zoom 4.7 - 84.6 mm	Motorised 18x optical zoom 4.7 - 84.6 mm	7.5 mm	9 mm	13 mm	19 mm	25 mm	35 mm	50 mm	BC820H1 and TC620	Motorised 30x optical zoom 4.3 to 129 mm	Motorised 30x optical zoom 4.3 to 129 mm
f-number	F1.6	F1.6	F1.6	F1.6	F1.6	f/1.4	f/1.25	f/1.25	f/1.25	f/1.1	f/1.2	f/1.2	BC820H1 and TC620	F1.6	F1.6
Horizontal field of view	57.8° - 1.7°	57.8° - 1.7°	57.8° - 1.7°	61.5° - 3.3°	61.5° - 3.3°	45°x35°	35°x27°	25°x19°	17°x13°	13°x10°	9.3°x7.1°	6.5°x5°	BC820H1 and TC620	65.5° - 3.18°	65.5° - 3.18°
Spectral bandwidth	-	-	-	-	-	7.5 µm to 13.5 µm			7.5 µm to 13.5 µm			BC820H1 and TC620	-	-	
Rotation: 360° Continuous rotation	-	✓	✓	-	✓	-			✓			✓	✓	✓	
Tilt range: -90° to +90°	-	✓	-10° to +190°	-	✓	-			✓			✓	-10° to +190°	-10° to +190°	
Positional accuracy: +/- 0.1°	-	✓	+/- 0.225°	-	✓	-			✓			✓	+/- 0.225°	+/- 0.225°	
Ingress protection rating: IP66/IP67	✓	✓	✓	✓	✓	✓			✓			✓	✓	✓	
Light sensitivity / Sensitivity (NETD)	0.1 lx colour 0.01 lx B/W	0.1 lx colour 0.01 lx B/W	0.1 lx colour 0.01 lx B/W	0.2 lx colour 0.02 lx B/W	0.2 lx colour 0.02 lx B/W	< 50 mK @ f/1.0			< 50 mK @ f/1.0			BC820H1 and TC620	0.1 lx colour 0.01 lx B/W	0.5 lx colour 0.095 lx B/W	
Signal to noise ratio	>50 dB	>50 dB	>50 dB	>40dB	>40dB	-			-			>40dB (BC820H1)	-	-	
Max. resolution	540 TVL	540 TVL	650 TVL	1920 x 1080 @30 fps	1920 x 1080 @30 fps	336 x 256 @ 8.3 fps (S) or 25 fps (F)			336 x 256 @ 8.3 fps (S) or 25 fps (F)			BC820H1 and TC620	1920x1080 @30 fps	1920 x 1080 @60 fps	
Day/night (ICR)	✓	✓	✓	✓	✓	-			-			BC820H1 and TC620	✓	✓	
Power: 24 Vac; 110 Vac; 230 Vac	✓	✓	✓	✓	✓	✓			✓			✓	✓	✓	
Optical fiber option	✓	✓	✓	✓	✓	✓			✓			✓	✓	✓	
Max. power consumption	25 W	80 W	65 W	25 W	80 W	50 W			80 W			120 W	60 W	60 W	
Operating temperature: -20 °C to +60 °C (-4 °F to +140 °F)	✓	✓	-40 °C to +55 °C (-40 °F to +131 °F)	✓	✓	✓			✓			✓	-40 °C to +55 °C (-40 °F to +131 °F)	-40 °C to +55 °C (-40 °F to +131 °F)	
Sun shield	✓	✓	Optional	✓	✓	✓			✓			✓	Optional for TC620 standard for BC820H1	Optional	
Wiper	✓	✓	-	✓	✓	Optional			Optional			Only for BC820H1	-	-	
Internal demister	✓	✓	-	✓	✓	✓			✓			✓	-	-	
Washer system	Optional	Optional	-	Optional	Optional	Optional			Optional			Optional	-	-	
Mounting options	Wall, pole, pole top	Wall	Wall, pole	Wall, pole, pole top	Wall	Wall, pole, pole top			Wall			Wall	Wall, pole	Wall, pole	
Weight	8 kg (18 lbs)	25 kg (55 lbs)	9 kg (20 lbs)	8 kg (18 lbs)	25 kg (55 lbs)	8 kg (18 lbs)			25 kg (55 lbs)			37 kg (82 lbs)	9 kg (20 lbs)	10 kg (22 lbs)	
Dimensions	160x154x572 mm	497x392x440 mm	Ø168x328 mm	160x154x572 mm	497x392x440 mm	160x154x572 mm			497x392x440 mm			497x578x440 mm	Ø168x328 mm	Ø168x328 mm	