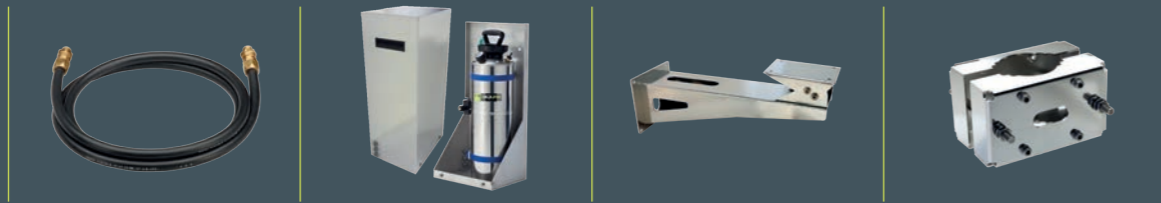
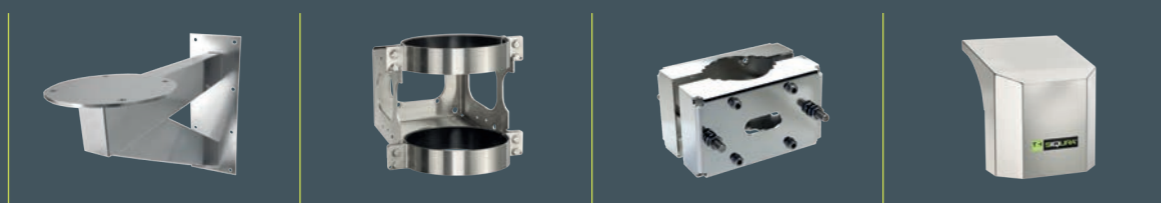


ExPLORE accessories

siguring your world



Model	Conduit	EX-WP10	EX wall mounting bracket F	EX pole mounting adaptor F
Description	Power/coax, power/Ethernet or power/ fiber conduit	10 litres manually pressurizable washer tank with Ex e or Ex d certified solenoid release valve	Wall mounting bracket for EX fixed camera housings	Pole mounting adapter for EX wall mounting bracket F
Only in combination with	EX fixed cameras and EX PTZ camera stations	EX fixed cameras and EX PTZ camera stations	EX Fixed housing	EX wall mounting bracket F
Material: AISI 316L Stainless Steel	-	✓	✓	✓
Certification	II 2G/D Ex d IIC	II 2G/D Ex e mb II T4; II 2G Ex d IIC Gb T6 II 2D Ex tb IIC Db	-	-
Weight	-	empty 16 kg (35 lbs); full 26 kg (57 lbs)	5 kg (11 lbs)	5 kg (11 lbs)
Maximum delivery head	-	20 m	-	-
Ingress protection	IP68	IP65	-	-
Solenoid voltage	-	24 Vac (Via camera station)	-	-
Power consumption	-	9 W (Ex e version); 10 W (Ex d version)	-	-
Capacity	-	10 l	-	-
Dimensions	d= 20 mm, M20 gland; d= 25 mm, M25 gland	347x654x264 mm	499x180x205 mm	196x219x250 mm



Model	EX wall mounting bracket P	EX wall mounting bracket H	EX pole mounting adaptor H	EX sunshield H
Description	Wall mounting bracket for EX PTZ camera stations	316L wall mounting bracket for EX dome cameras	316L pole mounting adapter for EX wall mounting bracket H	316L sunshield for EX dome cameras
Only in combination with	EX PTZ camera station	EX dome cameras	EX dome cameras	EX wall mounting bracket H
Material: AISI 316L Stainless Steel	✓	✓	✓	✓
Certification	-	-	-	-
Weight	8 kg (18 lbs)	5 kg (11 lbs)	3 kg (7 lbs)	4 kg (9 lbs)
Dimensions	622.5x200x350 mm	290x203x213 mm	196x219x250 mm	330x301x473 mm

Sigura B.V
Zuidelijk Halfmond 4, 2801 DD Gouda
The Netherlands
T +31 18 25 92 333
sales.nl@tkhsecurity.com
www.sigura.com

Sigura is part of TKH Security Solutions, a division of the TKH Group. TKH Security Solutions offers a wide range of systems for access control, surveillance, intrusion detection and video management.



EXPLORE

cameras



Product line card

www.sigura.com



ExPLORE cameras siquring your world



Bringing uncomplicated clarity to harsh environments
For its newly developed gas field in Mehar, Pakistan, OMV needed an all-IP surveillance system able to cope with the region's hot summers and cold winters. Siqura decided to implement a mix of its BC620WDR-SFP, HSD626 and HSD820H2-E cameras. Surveillance images now shoot across a fiber-optic Ethernet network based on Siqura's managed SFP switches, while operators have the entire system at their fingertips with DIVA, Siqura's advanced video management solution.

Other product groups



Video over fiber



Video encoders



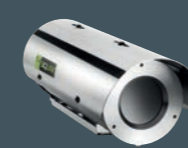
Network equipment



Cameras



Video management system



Model	Analogue					IP									
	EX-BC36 F	EX-BC36 P	HD18EXP	EX-BC820H1 F	EX-BC820H1 P	EX-TC620-PID F				EX-TC620 P			EX-BC820H1-TC620 D	HSD820H3EXP	HSD870H3EXP MDC
Description	Ex 316L analogue 36x zoom fixed camera	Ex 316L analogue 36x zoom PTZ camera station	Ex d 316L analogue 36x zoom high speed dome camera	Ex 316L 1080p IP 18x zoom fixed camera	Ex 316L 1080p IP 18x zoom PTZ camera station	Ex 316L thermal IP fixed camera with PID				Ex 316L thermal IP PTZ camera station			Ex 316L dual imager PTZ camera station	Ex 316L 1080p IP 30x zoom high speed dome camera	Ex 316L 1080p 3G HD-SDI/IP 30x zoom PTZ Marine Dome Camera
Certifications	ATEX, IECEx	ATEX, IECEx	ATEX	ATEX, IECEx	ATEX, IECEx	ATEX, IECEx				ATEX, IECEx			ATEX, IECEx	ATEX	ATEX
Area classification	II 2 G Ex d op pr IIC T6	II 2 G Ex d op pr IIC T6	II 2 G/D, Ex d IIB T5 T100°C	II 2 G Ex d op pr IIC T6 II 2 D Ex tb IIC T85°C Db	II 2 G Ex d op pr IIC T6 II 2 D Ex tb IIC T85°C Db	II 2 G Ex d op pr IIC T6 II 2 D Ex tb IIC T85°C Db				II 2 G Ex d op pr IIC T6 II 2 D Ex tb IIC T85°C Db			II 2 G Ex d op pr IIC T6 II 2 D Ex tb IIC T85°C Db	II 2 G/D, Ex d IIB T5 T100°C	II 2 G/D, Ex d IIB T5 T100°C
Body material: Stainless steel 316 L, electro-polished	✓	✓	✓	✓	✓	✓				✓			✓	✓	✓
Image sensor	1/4" CCD	1/4" CCD	1/4" CCD	1/2.7" CMOS	1/2.7" CMOS	Uncooled microbolometer				Uncooled microbolometer			BC820H1 and TC620	1/2.8" Progressive scan CMOS	1/2.8" Progressive scan CMOS
Focal length	Motorised 36x optical zoom 3.4 - 122.4 mm	Motorised 36x optical zoom 3.4 - 122.4 mm	Motorised 36x optical zoom 3.4 - 122.4 mm	Motorised 18x optical zoom 4.7 - 84.6 mm	Motorised 18x optical zoom 4.7 - 84.6 mm	7.5 mm	9 mm	13 mm	19 mm	25 mm	35 mm	50 mm	BC820H1 and TC620	Motorised 30x optical zoom 4.3 to 129.0 mm	Motorised 30x optical zoom 4.3 to 129 mm
f-number	F1.6	F1.6	F1.6	F1.6	F1.6	f/1.4	f/1.25	f/1.25	f/1.25	f/1.1	f/1.2	f/1.2	BC820H1 and TC620	F1.6	F1.6
Horizontal field of view	57.8° - 1.7°	57.8° - 1.7°	57.8° - 1.7°	61.5° - 3.3°	61.5° - 3.3°	45°x35°	35°x27°	25°x19°	17°x13°	13°x10°	9.3°x7.1°	6.5°x5°	BC820H1 and TC620	65.5° - 3.18°	65.5° - 3.18°
Spectral bandwidth	-	-	-	-	-	7.5 µm to 13.5 µm			7.5 µm to 13.5 µm			7.5 µm to 13.5 µm	-	-	
Rotation: 360° Continuous rotation	-	✓	✓	-	✓	-				✓			✓	✓	
Tilt range	-	-90° to +90°	-10° to +190°	-	-90° to +90°	-				-90° to +90°			-90° to +90°	-10° to +190°	✓
Positional accuracy	-	+/- 0.1°	+/- 0.225°	-	+/- 0.1°	-				+/- 0.1°			+/- 0.1°	+/- 0.225°	+/- 0.1°
Ingress protection rating: IP66/IP67	✓	✓	✓	✓	✓	✓				✓			✓	✓	✓
Light sensitivity / Sensitivity (NETD)	0.1 lx colour 0.01 lx B/W	0.1 lx colour 0.01 lx B/W	0.1 lx colour 0.01 lx B/W	0.2 lx colour 0.02 lx B/W	0.2 lx colour 0.02 lx B/W	< 50 mK @ f/1.0				< 50 mK @ f/1.0			BC820H1 and TC620	0.1 lx colour 0.01 lx B/W	0.1 lx colour 0.01 lx B/W
Signal to noise ratio	>50 dB	>50 dB	>50 dB	>40dB	>40dB	-				-			>40dB (BC820H1)	-	-
Max. resolution	550 TVL	540 TVL	650 TVL	1920 x 1080 @30 fps	1920 x 1080 @30 fps	336x256 pixels @ 8.3 fps (s) or 25 fps (f)				336x256 pixels @ 8.3 fps (s) or 25 fps (f)			BC820H1 and TC620	1920 x 1080 @30 fps	1920 x 1080 @60 fps
Day/night (ICR)	✓	✓	✓	✓	✓	-				-			-	✓	✓
Power: 24 Vac; 110 Vac; 230 Vac	✓	✓	✓	✓	✓	✓				✓			✓	✓	✓
Optical fiber option	✓	✓	✓	✓	✓	✓				✓			✓	✓	✓
Max. power consumption	25 W	95 W	65 W	25 W	95 W	25 W				80 W			120 W	59 W	60 W
Operating temperature	-20 °C to +60 °C (-4 °F to +140 °F)	-20 °C to +60 °C (-4 °F to +140 °F)	-45 °C to +50 °C (-49 °F to +122 °F)	-20 °C to +60 °C (-4 °F to +140 °F)	-20 °C to +60 °C (-4 °F to +140 °F)	-20 °C to +60 °C (-4 °F to +140 °F)				-20 °C to +60 °C (-4 °F to +140 °F)			-20 °C to +60 °C (-4 °F to +140 °F)	-40 °C to +60 °C (-40 °F to +140 °F)	-40 °C to +55 °C (-40 °F to +131 °F)
Sun shield	✓	✓	-	✓	✓	✓				✓			✓	-	Optional
Wiper	✓	✓	-	✓	✓	-				-			Only for BC820H1	-	-
Internal demister	✓	✓	-	✓	✓	✓				✓			✓	-	-
Window protection	-	-	-	-	-	no grid option				no grid option			no grid option for TC620	-	-
Mounting options	Wall, pole	Wall	Wall, pole	Wall, pole	Wall	Wall, pole				Wall			Wall	Wall, pole	Wall, pole
Weight	13 kg (29 lbs)	46 kg (101 lbs)	15 kg (33 lbs)	13 kg (18 lbs)	46 kg (102 lbs)	13 kg (18 lbs)				46 kg (102 lbs)			55 kg (121 lbs)	15 kg (33 lbs)	15 kg (33 lbs)
Dimensions	161x178x630 mm	548x435x380 mm	ø 195 x 373 mm	161x178x630 mm	548x435x380 mm	161x178x630 mm				548x435x380 mm			548x653x380 mm	ø 195 x 373 mm	ø 195 x 373 mm

Improve performance and reduce risk within your supply chain

Siqura is fully registered as a supplier on the Achilles First Point Assessment Database (FPAL) for suppliers to the oil and gas industry for the provision of products and services.

